

LOC/DME I-RBD <b>110.75</b> Chan <b>44</b> (Y)	APP CRS <b>309°</b>	Rwy Idg TDZE Apt Elev <b>6601</b> <b>660</b> <b>661</b>
--	------------------------	--

# ILS or LOC RWY 31

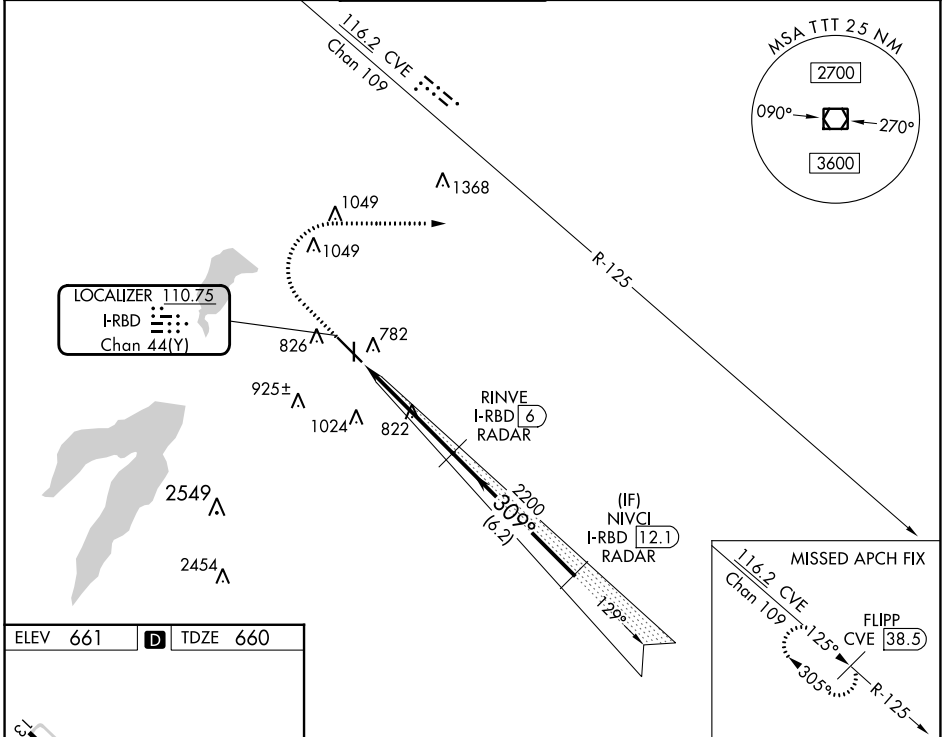
DALLAS EXEC (R.BD)

RADAR required for procedure entry, DME or RADAR required for LOC only.

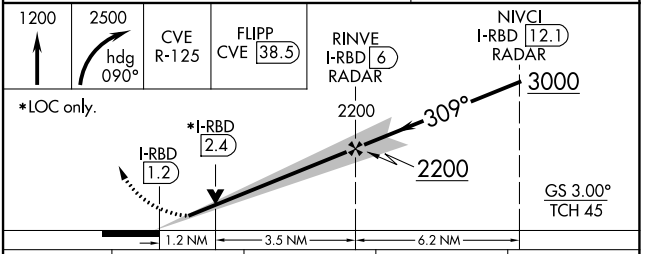
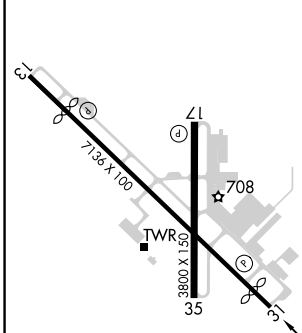
**⚠**

MISSED APPROACH: Climb to 1200 then climbing right turn to 2500 on heading 090° and CVE  
VOR/DME R-125 to FLIPP/CVE 38.5 DME and hold.

ATIS <b>126.35</b>	LONE STAR APP CON <b>125.2 343.65</b>	EXECUTIVE TOWER* <b>127.25</b> (CTAF) <b>0</b>	GND CON <b>119.475</b>	CLNC DEL <b>118.625</b>	UNICOM <b>122.95</b>
-----------------------	--	---	---------------------------	----------------------------	-------------------------



ELEV 661	<b>D</b>	TDZE 660
----------	----------	----------



REIL Rwys 13, 17, 31 and 35 MIRL Rwys 13-31 and 17-35 <b>0</b> FAF to MAP 4.7 NM	<table border="1"> <tr> <td>Knots</td> <td>60</td> <td>90</td> <td>120</td> <td>150</td> <td>180</td> </tr> <tr> <td>Min:Sec</td> <td>4:42</td> <td>3:08</td> <td>2:21</td> <td>1:53</td> <td>1:34</td> </tr> </table>				Knots	60	90	120	150	180	Min:Sec	4:42	3:08	2:21	1:53	1:34
Knots	60	90	120	150	180											
Min:Sec	4:42	3:08	2:21	1:53	1:34											
<b>C</b> CIRCLING	1160-1 499 (500-1)	1220-1 559 (600-1)	1340-2 679 (700-2)	1400-2½ 739 (800-2½)												

SC-2, 28 NOV 2024 to 26 DEC 2024

SC-2, 28 NOV 2024 to 26 DEC 2024