

KINGDOM FOUR DEPARTURE  
(KING4.TTT) 25JAN24

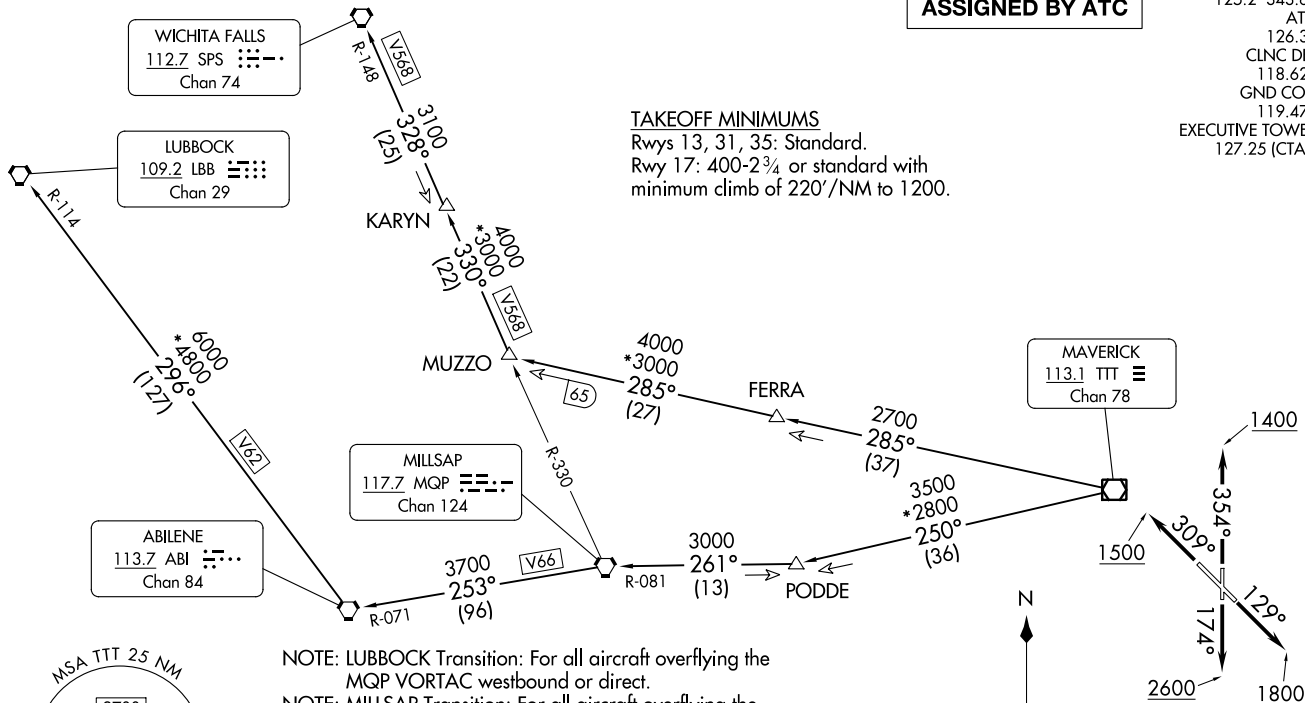
DALLAS, TEXAS  
DALLAS EXEC (RBD)

RADAR and DME required.

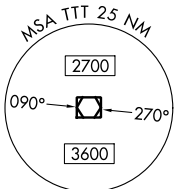
**TOP ALTITUDE:  
ASSIGNED BY ATC**

LONE STAR DEP CON  
125.2 343.65  
ATIS  
126.35  
CLNC DEL  
118.625  
GND CON  
119.475  
EXECUTIVE TOWER \*  
127.25 (CTAF)

**TAKEOFF MINIMUMS**  
Rwys 13, 31, 35: Standard.  
Rwy 17: 400-2¾ or standard with  
minimum climb of 220'/NM to 1200.



- NOTE: LUBBOCK Transition: For all aircraft overflying the MQP VORTAC westbound or direct.
- NOTE: MILLSAP Transition: For all aircraft overflying the MQP VORTAC westbound or direct.
- NOTE: WICHITA FALLS Transition: For all aircraft landing within the Wichita Falls terminal area or overflying the SPS VORTAC.
- NOTE: For all aircraft requesting 17000 and below.



NOTE: Chart not to scale.

(CONTINUED ON FOLLOWING PAGE)

(KING4.TTT) 24305  
KINGDOM FOUR DEPARTURE

AL-742 (FAA)

DALLAS, TEXAS  
DALLAS EXEC (RBD)

# KINGDOM FOUR DEPARTURE



## DEPARTURE ROUTE DESCRIPTION

- TAKEOFF RUNWAY 13: Climb on heading 129° to 1800 before turning westbound.
- TAKEOFF RUNWAY 17: Climb on heading 174° to 2600 before turning westbound.
- TAKEOFF RUNWAY 31: Climb on heading 309° to 1500 before turning southbound.
- TAKEOFF RUNWAY 35: Climb on heading 354° to 1400 before turning southbound.

When entering controlled airspace, fly assigned heading for RADAR vectors to appropriate route. Maintain ATC assigned altitude.

LUBBOCK TRANSITION (KING4.LBB): From over TTT VOR/DME on TTT R-250 to PODDE, then on MQP R-081 to MQP VORTAC, then on MQP R-253 and ABI R-071 to ABI VORTAC, then on ABI R-296 and LBB R-114 to LBB VORTAC.

MILLSAP TRANSITION (KING4.MQP): From over TTT VOR/DME on TTT R-250 to PODDE, then on MQP R-081 to MQP VORTAC.

PODDE TRANSITION (KING4.PODDE): From over TTT VOR/DME on TTT R-250 to PODDE.

WICHITA FALLS TRANSITION (KING4.SPS): From over TTT VOR/DME on TTT R-285 to MUZZO, then on MQP R-330 and SPS R-148 to KARYN, then on SPS R-148 to SPS VORTAC.

SC-2, 28 NOV 2024 to 26 DEC 2024

SC-2, 28 NOV 2024 to 26 DEC 2024