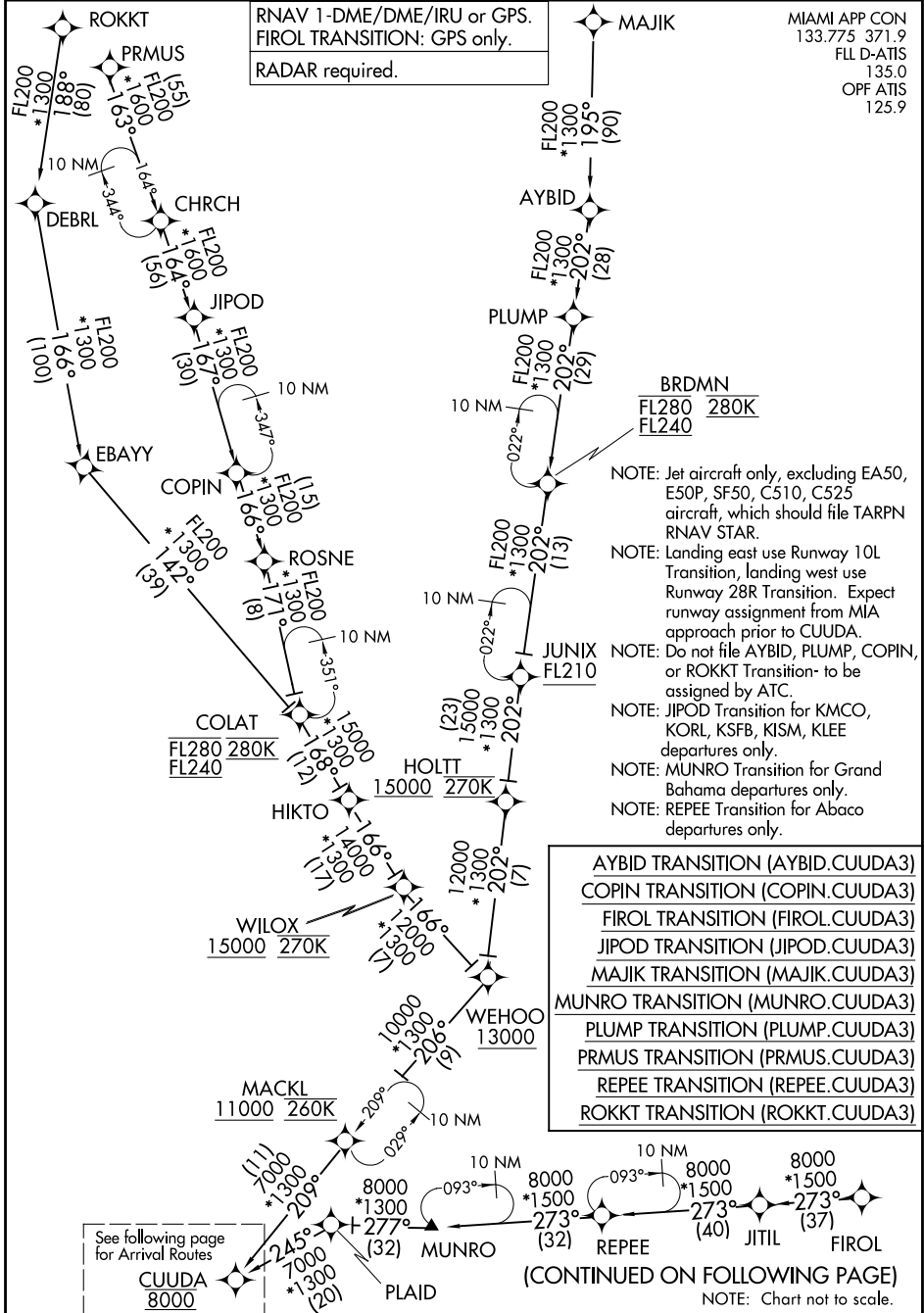


# CUUDA THREE ARRIVAL (RNAV) Transition Routes FORT LAUDERDALE, FLORIDA

RNAV 1-DME/DME/IRU or GPS.  
 FIROL TRANSITION: GPS only.  
 RADAR required.

MIAMI APP CON  
 133.775 371.9  
 FL D-ATIS  
 135.0  
 OPF ATIS  
 125.9



NOTE: Jet aircraft only, excluding EA50, E50P, SF50, C510, C525 aircraft, which should file TARPEN RNAV STAR.

NOTE: Landing east use Runway 10L Transition, landing west use Runway 28R Transition. Expect runway assignment from MIA approach prior to CUUDA.

NOTE: Do not file AYBID, PLUMP, COPIN, or ROKKT Transition- to be assigned by ATC.

NOTE: JIPOD Transition for KMCO, KORL, KSFB, KISM, KLEE departures only.

NOTE: MUNRO Transition for Grand Bahama departures only.

NOTE: REPEE Transition for Abaco departures only.

- AYBID TRANSITION (AYBID.CUUDA3)
- COPIN TRANSITION (COPIN.CUUDA3)
- FIROL TRANSITION (FIROL.CUUDA3)
- JIPOD TRANSITION (JIPOD.CUUDA3)
- MAJIK TRANSITION (MAJIK.CUUDA3)
- MUNRO TRANSITION (MUNRO.CUUDA3)
- PLUMP TRANSITION (PLUMP.CUUDA3)
- PRMUS TRANSITION (PRMUS.CUUDA3)
- REPEE TRANSITION (REPEE.CUUDA3)
- ROKKT TRANSITION (ROKKT.CUUDA3)

See following page for Arrival Routes

CUUDA  
8000

(CONTINUED ON FOLLOWING PAGE)  
 NOTE: Chart not to scale.

SE-3, 28 NOV 2024 to 26 DEC 2024

SE-3, 28 NOV 2024 to 26 DEC 2024

# CUUDA THREE ARRIVAL (RNAV) Transition Routes FORT LAUDERDALE, FLORIDA

# CUUDA THREE ARRIVAL (RNAV) Arrival Routes

FORT LAUDERDALE, FLORIDA

MIAMI APP CON  
 133.775 371.9  
 FLL D-ATIS  
 135.0  
 OPF ATIS  
 125.9

RNAV 1-DME/DME/IRU or GPS.  
 FIROL TRANSITION: GPS only.

RADAR required.

NOTE: Jet aircraft only, excluding EA50, E50P, SF50, C510, C525 aircraft, which should file TARPEN RNAV STAR.

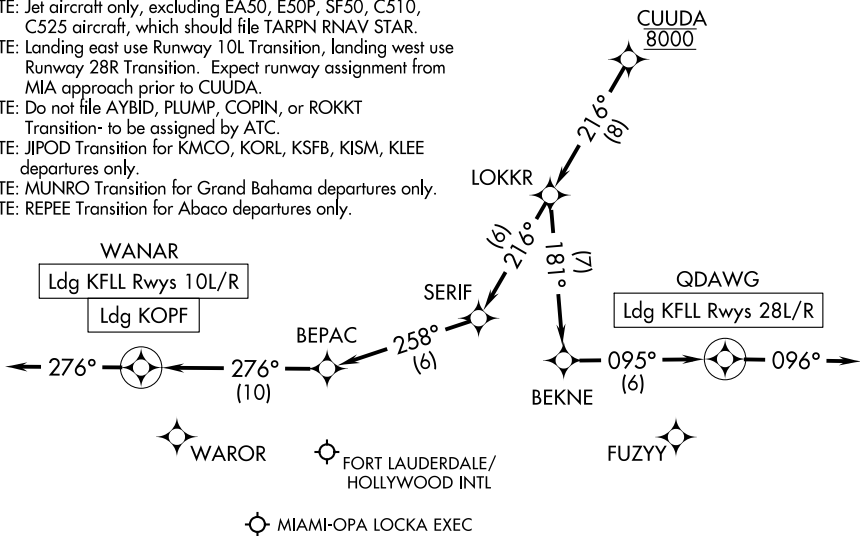
NOTE: Landing east use Runway 10L Transition, landing west use Runway 28R Transition. Expect runway assignment from MIA approach prior to CUUDA.

NOTE: Do not file AYBID, PLUMP, COPIN, or ROKKT Transition- to be assigned by ATC.

NOTE: JIPOD Transition for KMCO, KORL, KSFB, KISM, KLEE departures only.

NOTE: MUNRO Transition for Grand Bahama departures only.

NOTE: REPEE Transition for Abaco departures only.



NOTE: Chart not to scale.

## ARRIVAL ROUTE DESCRIPTION

KFLL: From CUUDA on track 216° to LOKKR.

LANDING KFL RUNWAYS 10L/R: From LOKKR on track 216° to SERIF, then on track 258° to BEPAC, then on track 276° to WANAR, then on track 276°.  
 Expect RADAR vectors to final approach course.

LANDING KFL RUNWAYS 28L/R: From LOKKR on track 181° to BEKNE, then on track 095° to QDAWG, then on track 096°.  
 Expect RADAR vectors to final approach course.

LANDING KOPF: From CUUDA on track 216° to LOKKR, then on track 216° to SERIF, then on track 258° to BEPAC, then on track 276° to WANAR, then on track 276°.  
 Expect RADAR vectors to final approach course.