

(DORRL2.DORRL) 24081

AL-744 (FAA)

FORT LAUDERDALE/HOLLYWOOD INTL (FLL)

# DORRL TWO DEPARTURE (RNAV)

FORT LAUDERDALE, FLORIDA

MIAMI DEP CON  
126.05 251.1  
D-ATIS  
135.0  
CLNC DEL  
128.4  
CPDLC  
GND CON  
121.4  
FORT LAUDERDALE TOWER  
119.3 257.8

RNAV 1 - DME/DME/IRU or GPS.

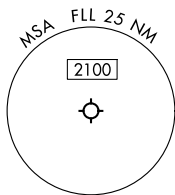
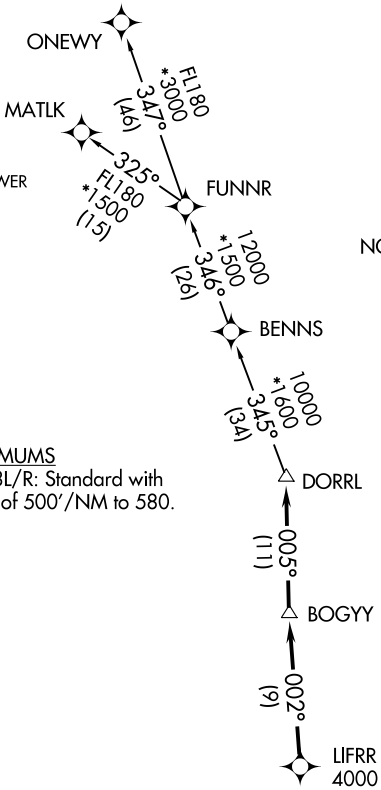
RADAR required.

**TOP ALTITUDE:  
ASSIGNED BY ATC**

NOTE: For turbo-props/props filed at or above 13000.

### TAKEOFF MINIMUMS

Rwys 10L/R, 28L/R: Standard with minimum climb of 500'/NM to 580.



NOTE: Chart not to scale.



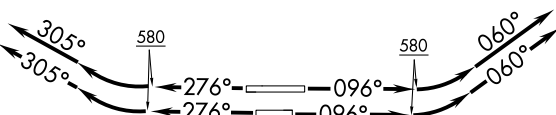
### DEPARTURE ROUTE DESCRIPTION SEE ADDITIONAL REQUIREMENTS ON AAUP

**TAKEOFF RUNWAYS 10L/R:** Climb on heading 096° to 580, then climbing left turn heading 060° or as assigned by ATC for vectors to cross LIFRR at or above 4000, thence. . . .

**TAKEOFF RUNWAYS 28L/R:** Climb on heading 276° to 580, then climbing right turn heading 305° or as assigned by ATC for vectors to cross LIFRR at or above 4000, thence. . . .

. . . .on track 002° to BOGY, then on track 005° to DORRL then on (transition), maintain altitude as assigned by ATC, expect filed altitude 10 minutes after departure.

MATLK TRANSITION (DORRL2.MATLK)  
ONEWY TRANSITION (DORRL2.ONEWY)



# DORRL TWO DEPARTURE (RNAV)

FORT LAUDERDALE, FLORIDA

(DORRL2.DORRL) 21MAR24

FORT LAUDERDALE/HOLLYWOOD INTL (FLL)

SE-3, 28 NOV 2024 to 26 DEC 2024

SE-3, 28 NOV 2024 to 26 DEC 2024