

FEALX TWO DEPARTURE (RNAV) Departure Routes
FEALX2, FEALX1 19MAY22
FORT LAUDERDALE, FLORIDA
FORT LAUDERDALE/HOLLYWOOD INTL (FTL)

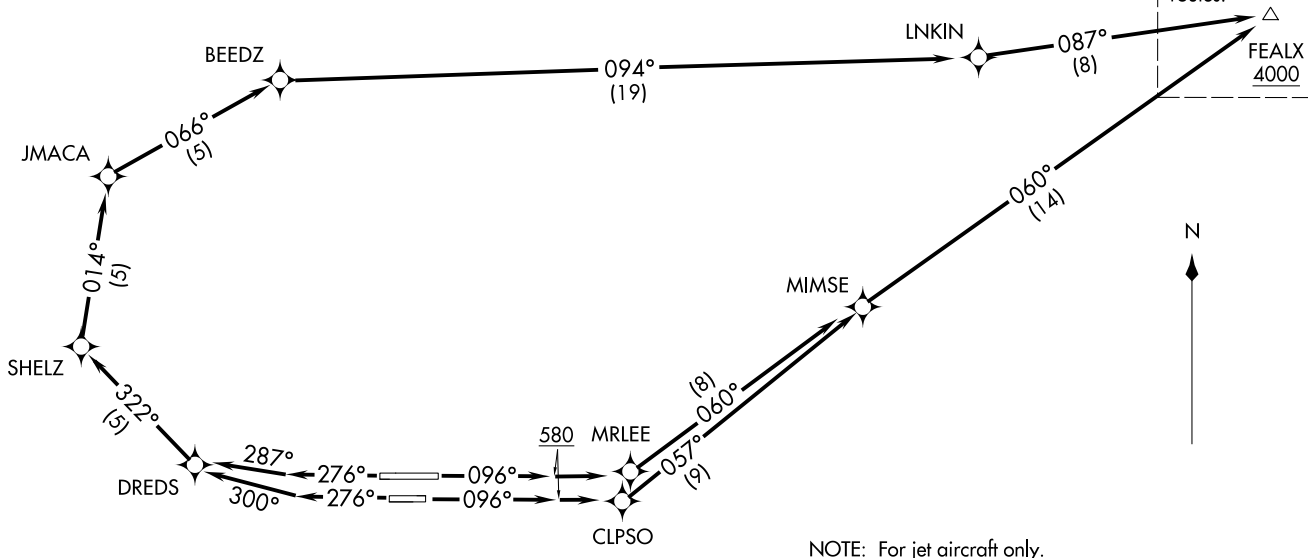
D-ATIS 135.0
CLNC DEL 128.4
CPDLC 121.4
GND CON 121.4
FORT LAUDERDALE TOWER 119.3 257.8
MIAMI DEP CON 126.05 251.1

**TOP ALTITUDE:
4000**

RNAV 1 - DME/DME/IRU or GPS.
RADAR required.

TAKEOFF MINIMUMS
Rwys 10L/R, 28L/R: Standard with minimum climb of 500' per NM to 580.

See following page for transition routes.
FEALX 4000



NOTE: For jet aircraft only.
NOTE: Accelerate to 250K, if unable, advise ATC.

(CONTINUED ON FOLLOWING PAGE)

NOTE: Chart not to scale.

FEALX2, FEALX1 22139
FEALX TWO DEPARTURE (RNAV) Departure Routes
AL-714 (FAA)
FORT LAUDERDALE/HOLLYWOOD INTL (FTL)
FORT LAUDERDALE, FLORIDA

FEALX TWO DEPARTURE (RNAV) Transition Routes

FORT LAUDERDALE/HOLLYWOOD INTL (FLL)

FORT LAUDERDALE, FLORIDA

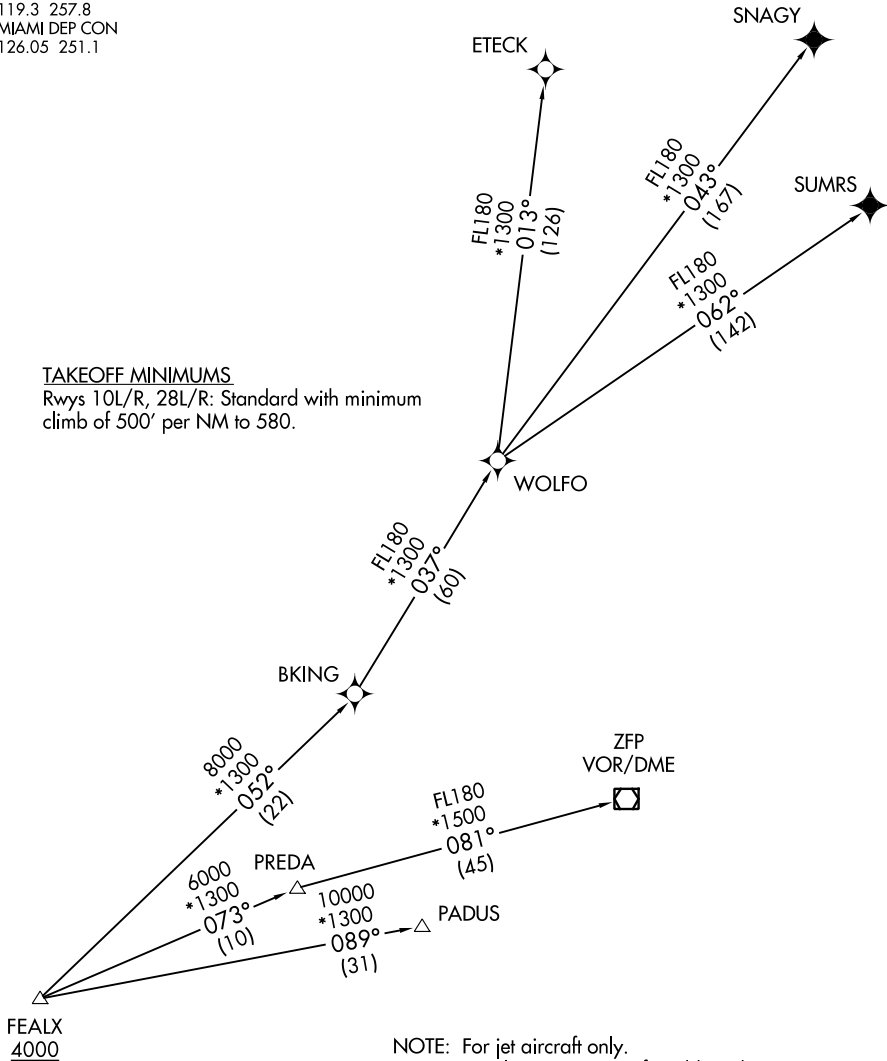
D-ATIS
135.0
CLNC DEL
128.4
CPDLC
GND CON
121.4
FORT LAUDERDALE TOWER
119.3 257.8
MIAMI DEP CON
126.05 251.1

**TOP ALTITUDE:
4000**

RNAV 1 - DME/DME/IRU or GPS.
From WOLFO to SNAGY, SUMRS - GPS.
RADAR required.

TAKEOFF MINIMUMS

Rwys 10L/R, 28L/R: Standard with minimum climb of 500' per NM to 580.



NOTE: For jet aircraft only.
NOTE: Accelerate to 250K, if unable, advise ATC.

(NARRATIVE ON FOLLOWING PAGE)

NOTE: Chart not to scale.

SE-3, 28 NOV 2024 to 26 DEC 2024

SE-3, 28 NOV 2024 to 26 DEC 2024

FEALX TWO DEPARTURE (RNAV)



DEPARTURE ROUTE DESCRIPTION

SEE ADDITIONAL REQUIREMENTS ON AAUP

TAKEOFF RUNWAY 10L: Climb on heading 096° to 580, then climb direct MRLEE, then on track 060° to MIMSE, then on track 060° to cross FEALX at or above 4000, thence. . .

TAKEOFF RUNWAY 10R: Climb on heading 096° to 580, then climb direct CLPSO, then on track 057° to MIMSE, then on track 060° to cross FEALX at or above 4000, thence. . .

TAKEOFF RUNWAY 28L: Climb on heading 276° to intercept course 300° to DREDS, then on track 322° to SHELZ, then on track 014° to JMACA, then on track 066° to BEEDZ, then on track 094° to LNKIN, then on track 087° to cross FEALX at or above 4000, thence. . .

TAKEOFF RUNWAY 28R: Climb on heading 276° to intercept course 287° to DREDS, then on track 322° to SHELZ, then on track 014° to JMACA, then on track 066° to BEEDZ, then on track 094° to LNKIN, then on track 087° to cross FEALX at or above 4000, thence. . .

. . .(transition). Maintain 4000. Expect clearance to filed altitude ten minutes after departure.

ETECK TRANSITION (FEALX2.ETECK)

FREEMPORT TRANSITION (FEALX2.ZFP)

PADUS TRANSITION (FEALX2.PADUS)

SNAGY TRANSITION (FEALX2.SNAGY)

SUMRS TRANSITION (FEALX2.SUMRS)

WOLFO TRANSITION (FEALX2.WOLFO)

SE-3, 28 NOV 2024 to 26 DEC 2024

SE-3, 28 NOV 2024 to 26 DEC 2024