

RNAV 1-DME/DME/IRU or GPS.  
RADAR required.

**TOP ALTITUDE:  
4000**

D-ATIS 135.0  
CLNC DEL 128.4  
CPDLC  
GND CON 121.4  
FORT LAUDERDALE TOWER 119.3 257.8  
MIAMI DEP CON 126.05 251.1

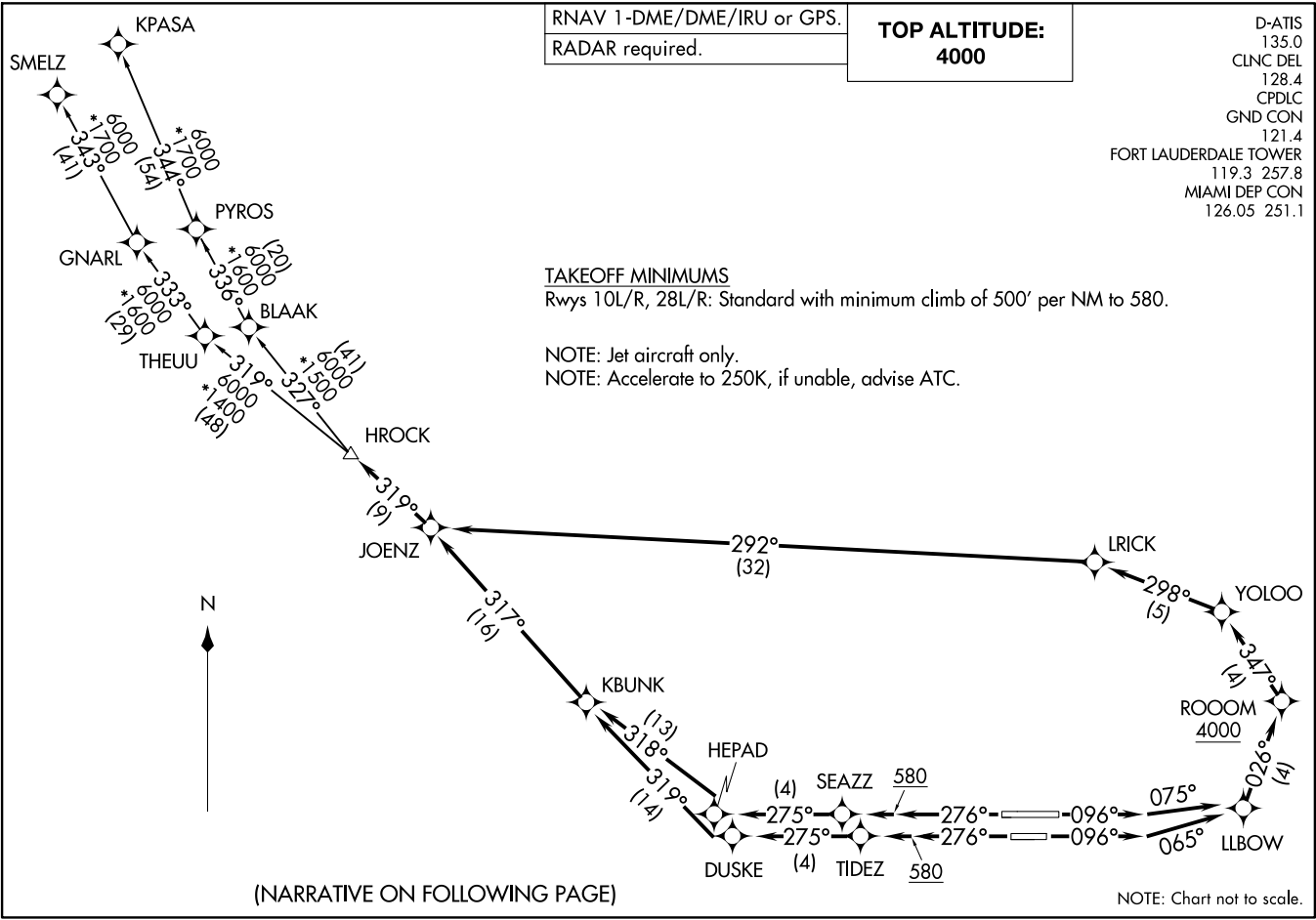
(HROCK2:HROCK) 23110  
HROCK TWO DEPARTURE (RNAV)

AL-744 (FAA)

FORT LAUDERDALE/HOLLYWOOD INTL (FLL)  
FORT LAUDERDALE, FLORIDA

HROCK TWO DEPARTURE (RNAV)  
(HROCK2:HROCK) 20APR23

FORT LAUDERDALE, FLORIDA  
FORT LAUDERDALE/HOLLYWOOD INTL (FLL)



**TAKEOFF MINIMUMS**

Rwys 10L/R, 28L/R: Standard with minimum climb of 500' per NM to 580.

NOTE: Jet aircraft only.

NOTE: Accelerate to 250K, if unable, advise ATC.

(NARRATIVE ON FOLLOWING PAGE)

NOTE: Chart not to scale.



DEPARTURE ROUTE DESCRIPTION

SEE ADDITIONAL REQUIREMENTS ON AAUP

TAKEOFF RUNWAY 10L: Climb on heading 096° to intercept course 075° to LLBOW, then on track 026° to cross ROOOM at or above 4000, then on track 347° to YOLOO, then on track 298° to LRICK, then on track 292° to JOENZ, thence. . . .

TAKEOFF RUNWAY 10R: Climb on heading 096° to intercept course 065° to LLBOW, then on track 026° to cross ROOOM at or above 4000, then on track 347° to YOLOO, then on track 298° to LRICK, then on track 292° to JOENZ, thence. . . .

TAKEOFF RUNWAY 28L: Climb on heading 276° to 580, then direct TIDEZ, then on track 275° to DUSKE, then on track 319° to KBUNK, then on track 317° to JOENZ, thence. . . .

TAKEOFF RUNWAY 28R: Climb on heading 276° to 580, then direct SEAZZ, then on track 275° to HEPAD, then on track 318° to KBUNK, then on track 317° to JOENZ, thence. . . .

. . . .on track 319° to HROCK, then on assigned transition. Maintain 4000, expect filed altitude within 10 minutes after departure.

KPASA TRANSITION (HROCK2.KPASA)

SMELZ TRANSITION (HROCK2.SMELZ)

SE-3, 28 NOV 2024 to 26 DEC 2024

SE-3, 28 NOV 2024 to 26 DEC 2024