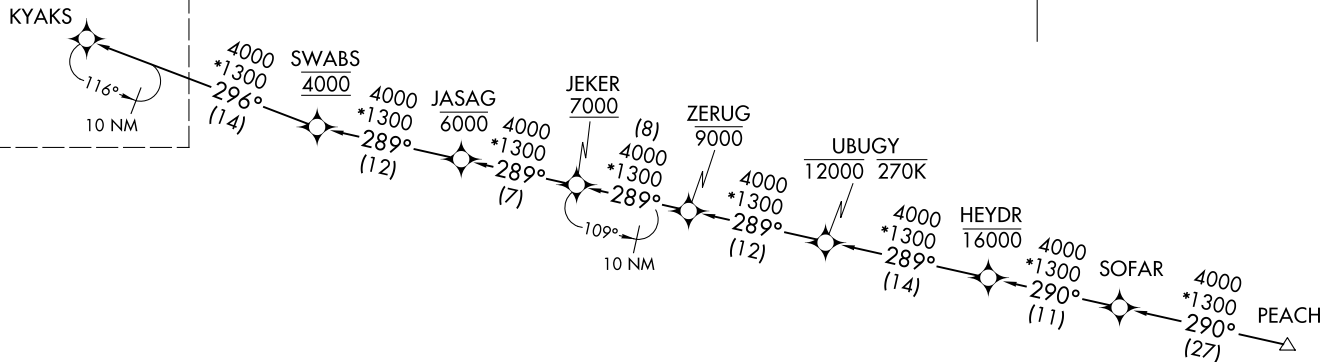


MIAMI APP CON
128.6 306.975
FLL D-ATIS
135.0
FXE ATIS
119.85
HWO ATIS
135.475
OPF ATIS
125.9
PMP ATIS
120.55

NOTE: Turboprop and prop aircraft only.
NOTE: Do not file JEKER Transition - to be assigned by ATC.



See following page
for arrival routes.



JEKER TRANSITION (JEKER.KYAKS3)
PEACH TRANSITION (PEACH.KYAKS3)
SOFAR TRANSITION (SOFAR.KYAKS3)

(NARRATIVE ON FOLLOWING PAGE)
(CONTINUED ON FOLLOWING PAGE)

NOTE: Chart not to scale.

KYAKS THREE ARRIVAL (RNAV) Transition Routes
(KYAKS, KYAKS3) 03NOV22
FORT LAUDERDALE, FLORIDA

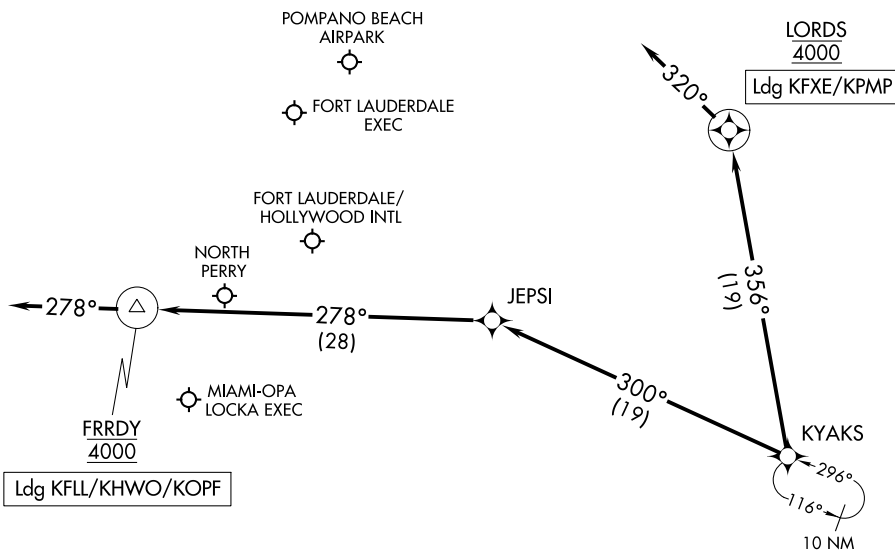
(KYAKS, KYAKS3) 22307
AL-744 (FAA)
FORT LAUDERDALE, FLORIDA

KYAKS THREE ARRIVAL (RNAV) Arrival Routes

FORT LAUDERDALE, FLORIDA

RNAV 1-GPS.
RADAR required.

- MIAMI APP CON 128.6 306.975
- FLL D-ATIS 135.0
- FXE ATIS 119.85
- HWO ATIS 135.475
- OPF ATIS 125.9
- PMP ATIS 120.55



SE-3, 28 NOV 2024 to 26 DEC 2024

SE-3, 28 NOV 2024 to 26 DEC 2024

NOTE: Turboprop and prop aircraft only.

NOTE: Chart not to scale.

ARRIVAL ROUTE DESCRIPTION

LANDING KFL/KHWO/KOPF: From KYAKS on track 300° to JEPSI, then on track 278° to cross FRRDY at 4000, then on track 278°. Expect RADAR vectors to final approach course.

LANDING KFXE/KPMP: From KYAKS on track 356° to cross LORDS at 4000, then on heading 320°. Expect RADAR vectors to final approach course.