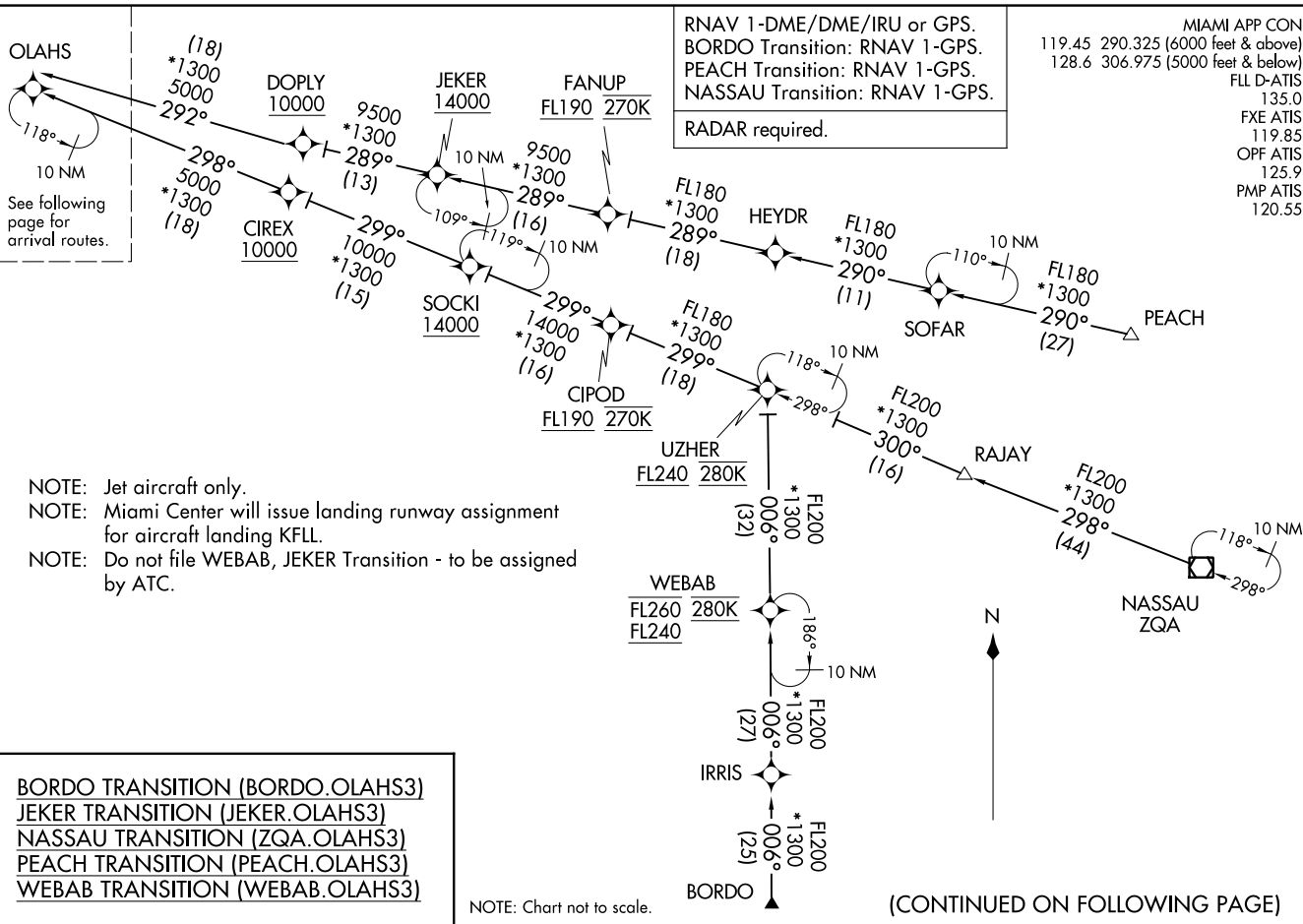


OLAHS THREE ARRIVAL (RNAV) (OLAHS.OLAHS3) 03NOV22

OLAHS THREE ARRIVAL (RNAV) Transition Routes

FORT LAUDERDALE, FLORIDA



BORDO TRANSITION (BORDO.OLAHS3)
JEKER TRANSITION (JEKER.OLAHS3)
NASSAU TRANSITION (ZQA.OLAHS3)
PEACH TRANSITION (PEACH.OLAHS3)
WEBAB TRANSITION (WEBAB.OLAHS3)

NOTE: Chart not to scale.

(CONTINUED ON FOLLOWING PAGE)

OLAHS THREE ARRIVAL (RNAV) 22207

AL7/44 (FAA)

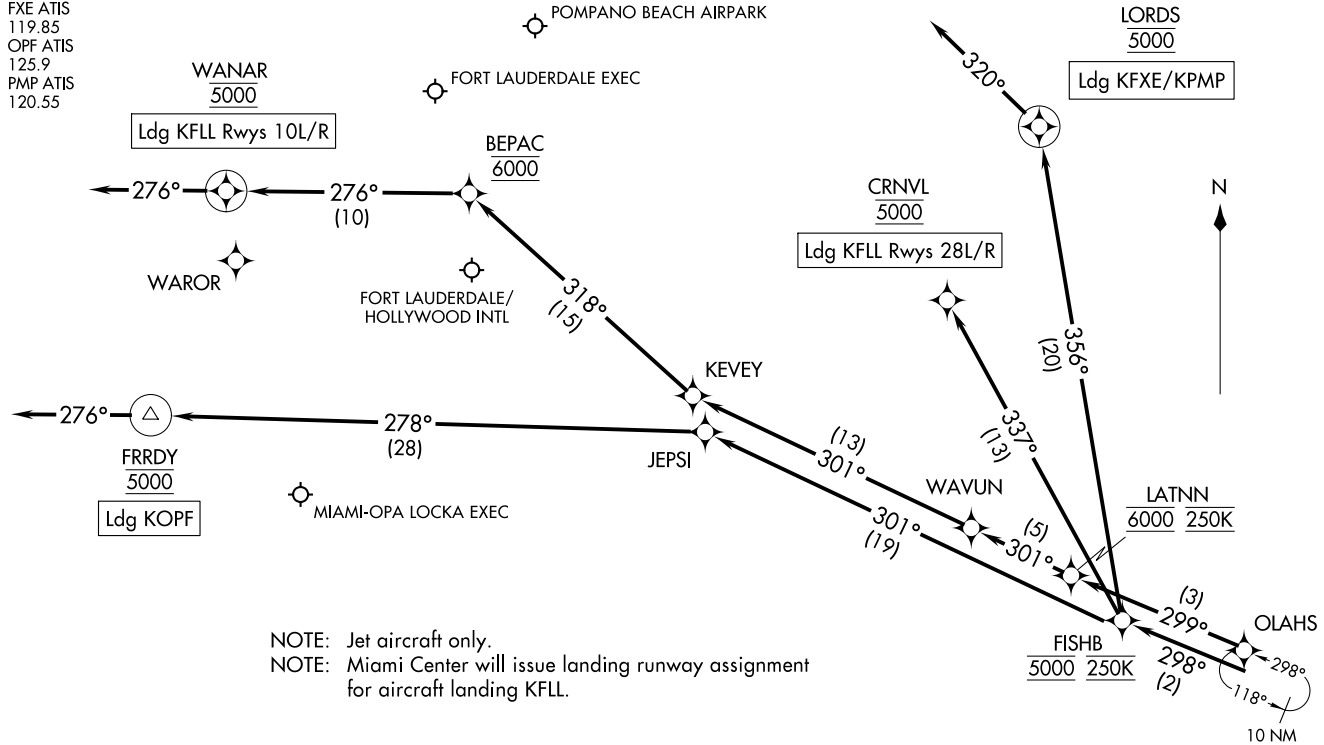
FORT LAUDERDALE, FLORIDA

RNAV 1-DME/DME/IRU or GPS.
RADAR required.

MIAMI APP CON
119.45 290.325 (6000 feet & above)
128.6 306.975 (5000 feet & below)
FLL D-ATIS
135.0
FXE ATIS
119.85
OPF ATIS
125.9
PMP ATIS
120.55

OLAH3 THREE ARRIVAL (RNAV) Arrival Routes
(OLAH3, OLAHS3) 03NOV22

(OLAH3, OLAHS3) 22307
AL-7/44 (FAA)
OLAH3 THREE ARRIVAL (RNAV) Arrival Routes
FORT LAUDERDALE, FLORIDA



NOTE: Jet aircraft only.
NOTE: Miami Center will issue landing runway assignment for aircraft landing KFL.

NOTE: Chart not to scale.

(NARRATIVE ON FOLLOWING PAGE)

ARRIVAL ROUTE DESCRIPTION

LANDING KFL RUNWAYS 10L/R: From OLAHS on track 299° to cross LATNN at 6000 and at 250K, then on track 301° to WAVUN, then on track 301° to KEVEY, then on track 318° to cross BEPAC at 6000, then on track 276° to cross WANAR at 5000, then on track 276°. Expect RADAR vectors to final approach course.

LANDING KFL RUNWAYS 28L/R: From OLAHS on track 298° to cross FISHB at 5000 and at 250K, then on track 337° to cross CRNVL at 5000.

LANDING KFXE/KPMP: From OLAHS on track 298° to cross FISHB at 5000 and at 250K, then on track 356° to cross LORDS at 5000, then on heading 320°. Expect RADAR vectors to final approach course.

LANDING KOPF: From OLAHS on track 298° to cross FISHB at 5000 and at 250K, then on track 301° to JEPSI, then on track 278° to cross FRRDY at 5000, then on heading 276°. Expect RADAR vectors to final approach course.

SE-3, 28 NOV 2024 to 26 DEC 2024

SE-3, 28 NOV 2024 to 26 DEC 2024