

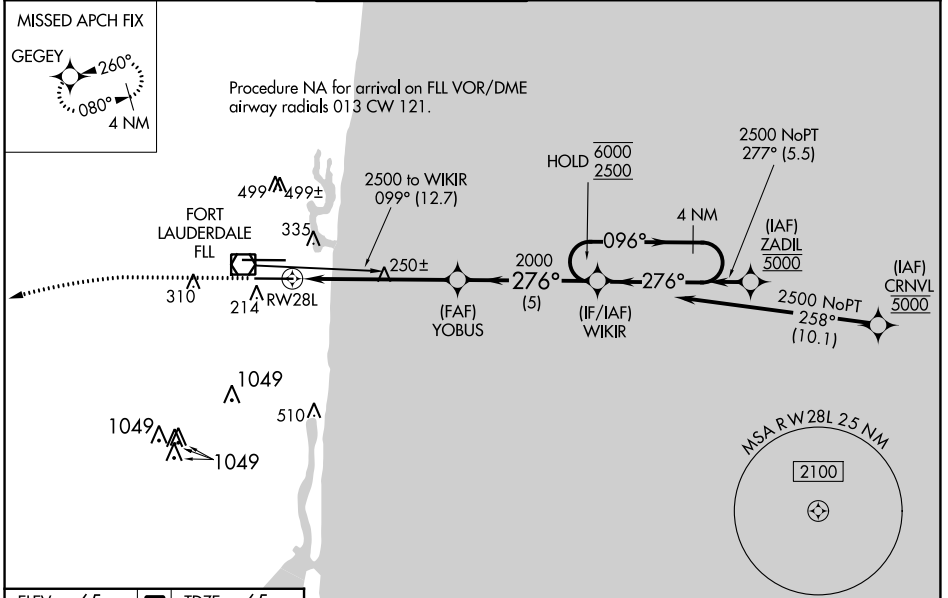
WAAS CH 58336 W28B	APP CRS 276°	Rwy Idg TDZE Apt Elev	8000 65 65
----------------------------------------	------------------------	-----------------------------	---------------------------------------

RNAV (GPS) RWY 28L

FORT LAUDERDALE/HOLLYWOOD INTL (FLL)

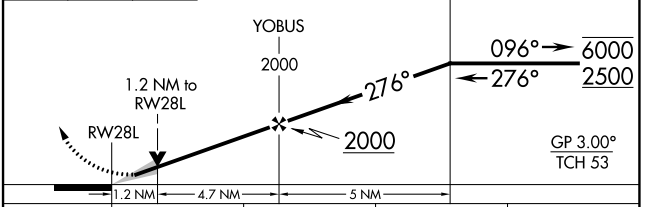
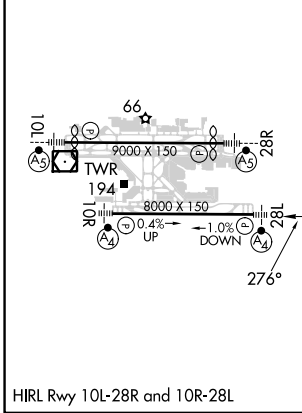
RNP APCH-GPS.	MALSF	MISSED APPROACH: Climb to 1000 then climbing left turn to 3000 direct GEGEY and hold.
<p>▼ Inop table does not apply to LPV. For uncompensated Baro-VNAV systems, LNAV/VNAV NA below 7°C or above 54°C. Simultaneous approach authorized. LNAV procedure NA during simultaneous operations. Use of FD or AP required during simultaneous operations.</p>		

D-ATIS 135.0	MIAMI APP CON 133.775 285.6	FORT LAUDERDALE TOWER 119.3 257.8	GND CON 121.4	CLNC DEL 128.4	CPDLC
------------------------	---------------------------------------	---------------------------------------------	-------------------------	--------------------------	-------



ELEV 65	D	TDZE 65
---------	----------	---------

1000	3000	GEGEY	VGSI and RNAV glidepath not coincident (VGSI Angle 3.00°/TCH 69).
↑	↩	✦	



CATEGORY	A	B	C	D
LPV DA		265/40	200 (200-¾)	
LNAV/VNAV DA		459/45	394 (400-⅞)	
LNAV MDA	500/40	435 (500-¾)	500/50	435 (500-1)
C CIRCLING	680-1	615 (700-1)	800-2 735 (800-2)	800-2¼ 735 (800-2¼)

SE-3, 28 NOV 2024 to 26 DEC 2024

SE-3, 28 NOV 2024 to 26 DEC 2024