

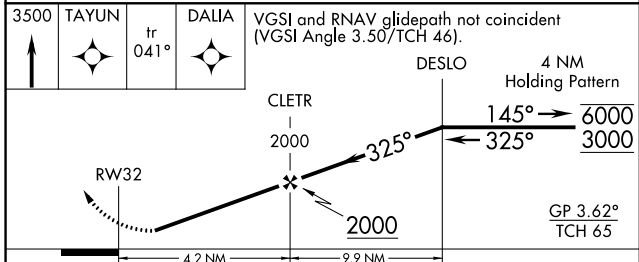
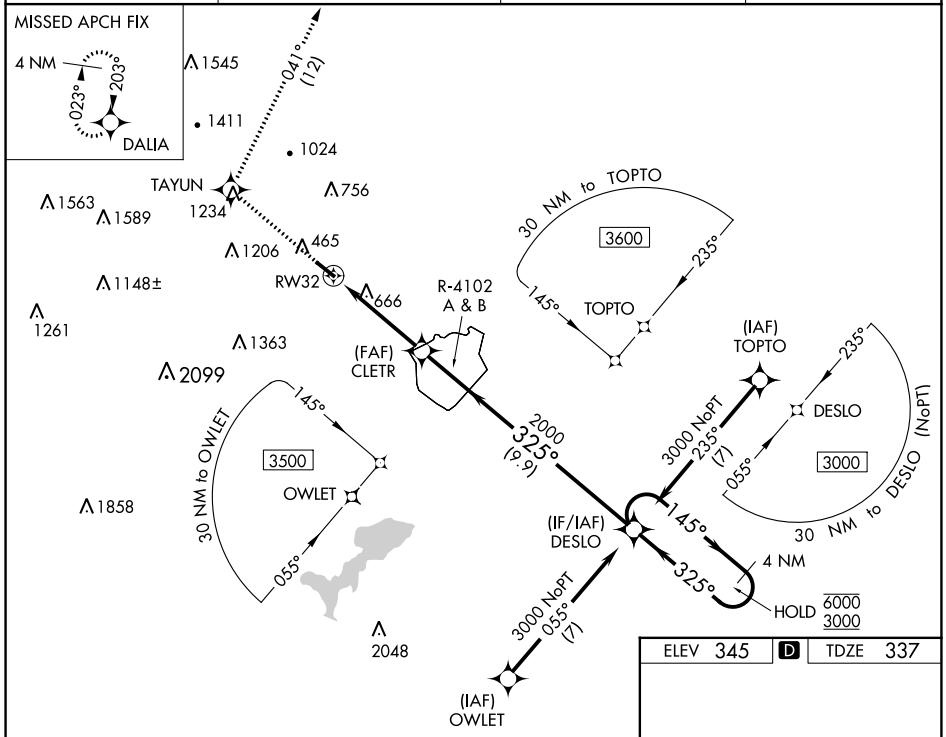
WAAS CH 48944 W32A	APP CRS 325°	Rwy Idg 4538 TDZE 337 Apt Elev 345
--	------------------------	---

RNAV (GPS) RWY 32

FITCHBURG MUNI (FIT)

RNP APCH - GPS.		MISSED APPROACH: Climb to 3500 direct TAYUN and on track 041° to DALIA and hold.	
<p>▼ Rwy 32 helicopter visibility reduction below 1 SM NA. ▲ Procedure NA when R-4102 A & B are active. ❄️ -22°C Circling NA southwest of Rwy 14-32 at night.</p>			

ASOS 135.175	BOSTON APP CON 124.4 279.6	UNICOM 122.7 (CTAF)	123.0 (I)
------------------------	--------------------------------------	-------------------------------	------------------



CATEGORY	A	B	C	D
LPV DA	773-1¼		436 (500-1¼)	NA
LNAV MDA	960-1	623 (700-1)	960-1¼ 623 (700-1¼)	NA
❑ CIRCLING	1080-1 735 (800-1)	1380-1½ 1035 (1100-1½)	1520-3 1175 (1200-3)	NA

ELEV 345	D	TDZE 337
-----------------	----------	-----------------

MIRL Rwy 14-32 (I)
REIL Rwy 14 and 32 (I)

NE-1, 28 NOV 2024 to 26 DEC 2024

NE-1, 28 NOV 2024 to 26 DEC 2024