

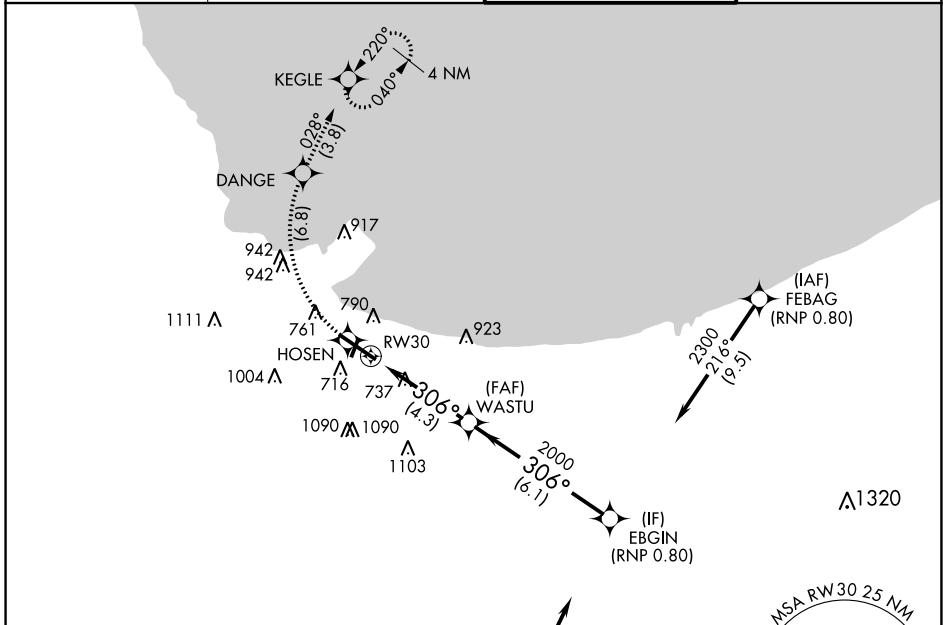
APP CRS	Rwy ldg	7959
306°	TDZE	591
	Apt Elev	597

RNAV (RNP) Z RWY 30

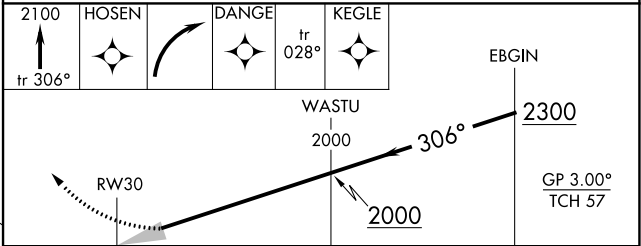
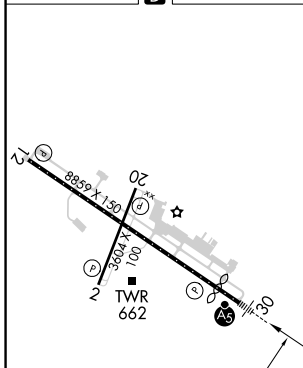
GARY/CHICAGO INTL (GYY)

RNP AR APCH - GPS.	MALSR	MISSED APPROACH: Climb to 2100 on track 306° to HOSEN, right turn to DANGE, then track 028° to KEGLE and hold.
▼ For uncompensated Baro-VNAV systems, procedure NA below -16°C or above 54°C. Missed approach requires RNP less than 1.0. For inop ALS, increase RNP 0.30 all Cats visibility to 1½ SM.	AS	

ATIS 134,575	CHICAGO APP CON 133.1 285.6	GARY TOWER ★ 125.6 (CTAF) 0	GND CON 121.9
------------------------	---------------------------------------	---------------------------------------	-------------------------



ELEV 597	D	TDZE 591
----------	---	----------



CATEGORY	A	B	C	D
RNP 0.13 DA		976/35	385 (400-½)	
RNP 0.30 DA		1098/55	507 (600-1)	

- REIL Rwy 2, 12 and 20
- HIRL Rwy 12-30
- MIRL Rwy 2-20

AUTHORIZATION REQUIRED

EC-2, 28 NOV 2024 to 26 DEC 2024

EC-2, 28 NOV 2024 to 26 DEC 2024