

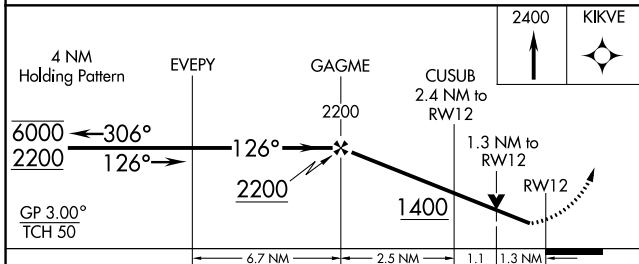
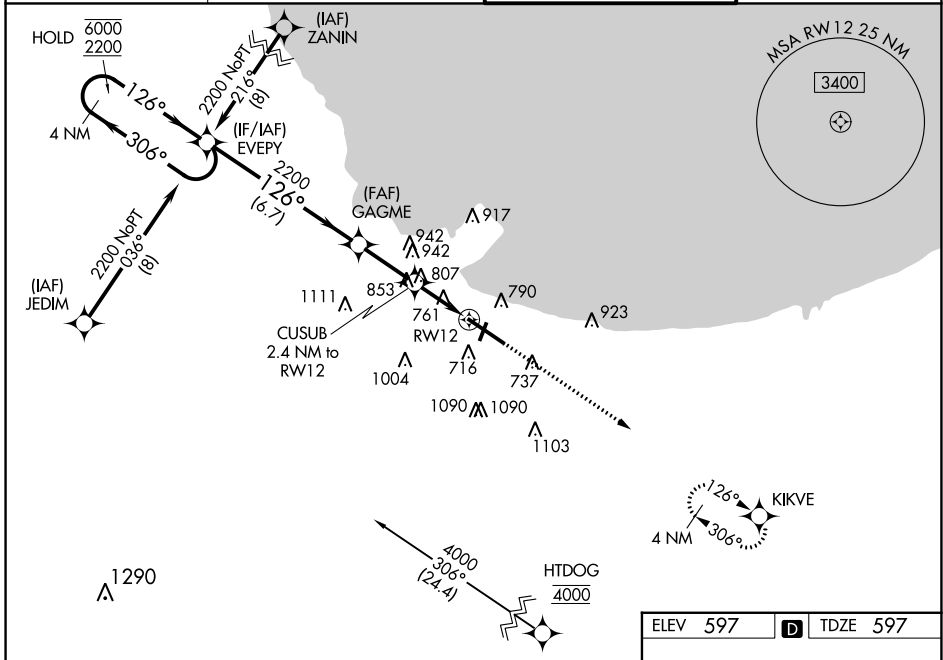
WAAS CH 70623 W12A	APP CRS 126°	Rwy Idg TDZE Apt Elev	7959 597 597
----------------------------------------	------------------------	-----------------------------	-----------------------------------------

RNAV (GPS) Y RWY 12

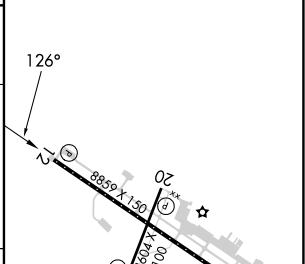
GARY/CHICAGO INTL (GYY)

RNP APCH - GPS.		MISSED APPROACH: Climb to 2400 direct KIKVE and hold.
<p>⚠ For uncompensated Baro-VNAV systems, LNAV/VNAV NA below -16°C or above 54°C. Rwy 12 helicopter visibility reduction below 3/4 SM NA.</p>		

ATIS 134.575	CHICAGO APP CON 133.1 285.6	GARY TOWER ★ 125.6 (CTAF) 0	GND CON 121.9
------------------------	---------------------------------------	---------------------------------------	-------------------------



ELEV 597	D	TDZE 597
----------	---	----------



CATEGORY	A	B	C	D
LPV DA	797-3/4		200 (200-3/4)	
LNAV/VNAV DA	1049-13/8		452 (500-13/8)	
LNAV MDA	1060-1	463 (500-1)	1060-13/8	463 (500-13/8)
CIRCLING	1160-1 563 (600-1)	1180-1 583 (600-1)	1400-21/4 803 (900-21/4)	1420-23/4 823 (900-23/4)

REIL Rwy 2, 12 and 20
 HIRL Rwy 12-30
 MIRL Rwy 2-20

EC-2, 28 NOV 2024 to 26 DEC 2024

EC-2, 28 NOV 2024 to 26 DEC 2024