

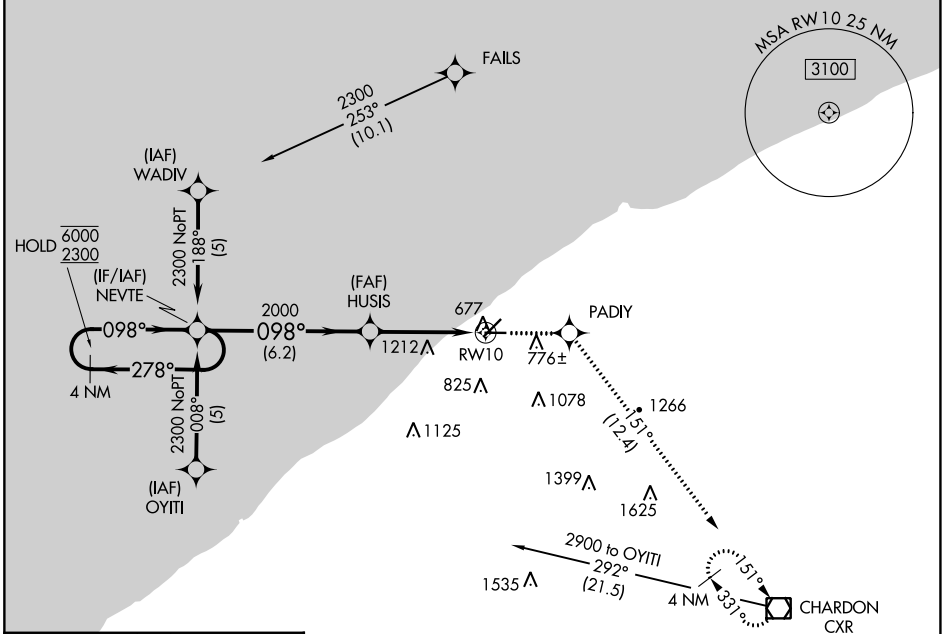
APP CRS	Rwy Idg	4272
098°	TDZE	625
	Apt Elev	626

RNAV (GPS) RWY 10

LAKE COUNTY EXEC (LNN)

RNP APCH.	MISSED APPROACH: Climb to 2900 direct PADIY and on track 151° to CXR VOR/DME and hold.
Rwy 10 helicopter visibility reduction below 3/4 SM NA.	

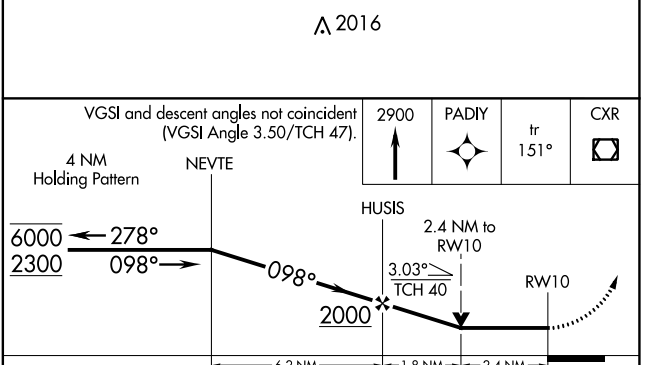
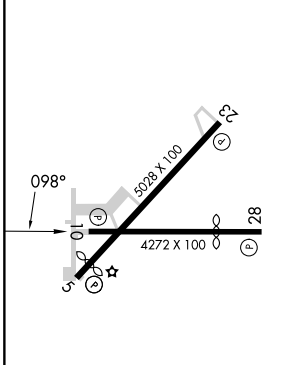
AWOS-3PT 119.225	CLEVELAND APP CON 125.35 346.325	UNICOM 122.725 (CTAF) 0
----------------------------	--	-----------------------------------



EC-2, 28 NOV 2024 to 26 DEC 2024

EC-2, 28 NOV 2024 to 26 DEC 2024

ELEV 626	TDZE 625
----------	----------



CATEGORY	A	B	C	D
RNAV MDA	1560-1 1/4	935 (1000-1 1/4)	1560-2 3/4 935 (1000-2 3/4)	NA
CIRCLING	1560-1 1/4	934 (1000-1 1/4)	1560-2 3/4 934 (1000-2 3/4)	NA