

WAAS CH 82410 W23A	APP CRS 233°	Rwy Idg 5028
		TDZE 623
		Apt Elev 626

RNAV (GPS) RWY 23

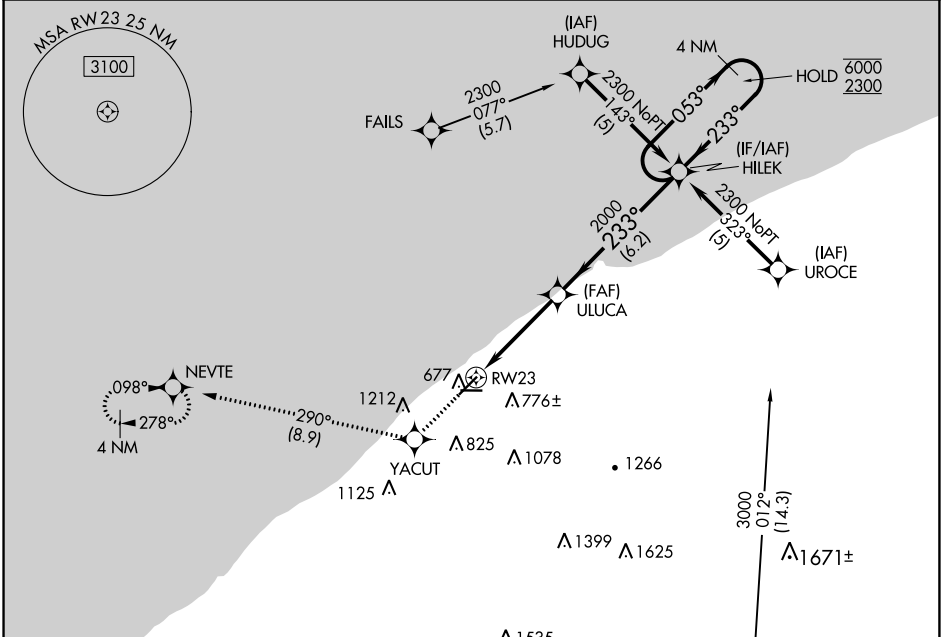
LAKE COUNTY EXEC (LNN)

RNP APCH - GPS.

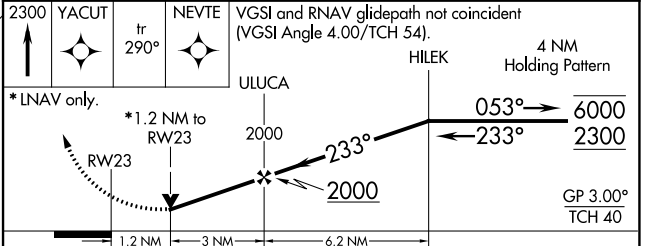
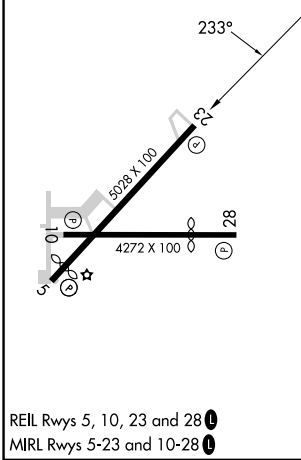
▼ Rwy 23 helicopter visibility reduction below 3/4 SM NA. For uncompensated Baro-VNAV systems, LNAV/VNAV NA below -16°C or above 54°C.

MISSED APPROACH: Climb to 2300 direct YACUT and on track 290° to NEVTE and hold.

AWOS-3PT 119.225	CLEVELAND APP CON 125.35 346.325	UNICOM 122.725 (CTAF) 0
----------------------------	--	--



ELEV 626	TDZE 623
----------	----------



CATEGORY	A	B	C	D
LPV DA		1031-1½	408 (500-1½)	NA
LNAV/VNAV DA		1142-1¾	519 (600-1¾)	NA
LNAV MDA	1200-1	577 (600-1)	1200-1½ 577 (600-1½)	NA
CIRCLING	1200-1	574 (600-1)	1520-2¾ 894 (900-2¾)	NA

WILLOUGHBY, OHIO
 REIL Rwy 5, 10, 23 and 28 **0**
 MIRL Rwy 5-23 and 10-28 **0**

41°41'N-81°23'W

LAKE COUNTY EXEC (LNN) RNAV (GPS) RWY 23

EC-2, 28 NOV 2024 to 26 DEC 2024

EC-2, 28 NOV 2024 to 26 DEC 2024