

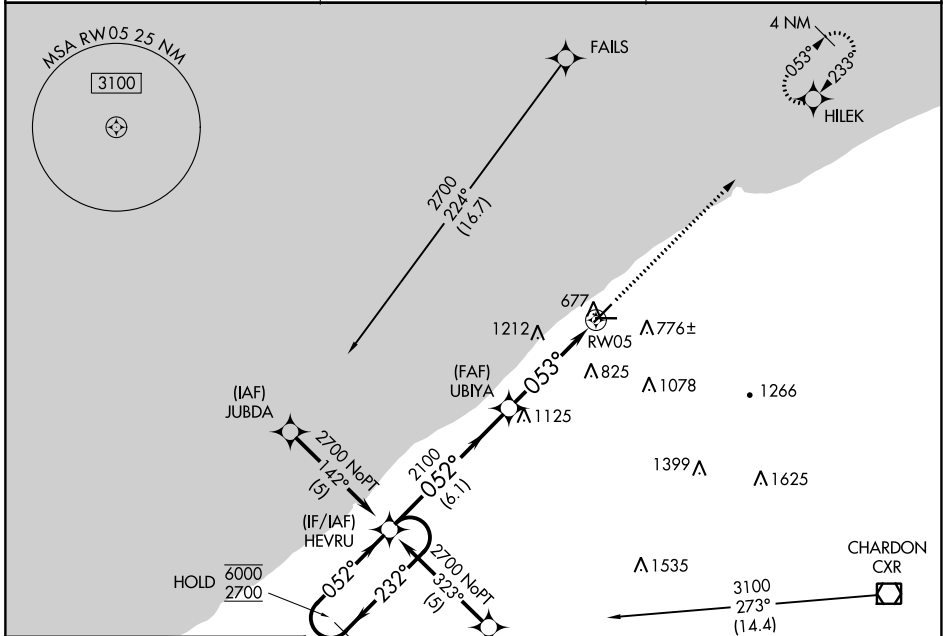
APP CRS	Rwy Idg	4600
053°	TDZE	624
	Apt Elev	626

RNAV (GPS) RWY 5

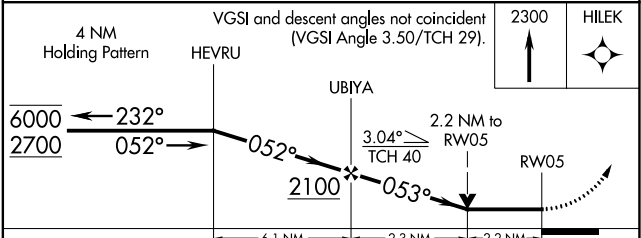
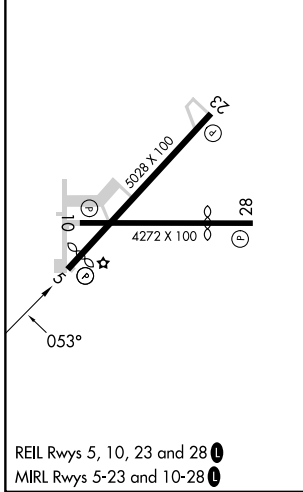
LAKE COUNTY EXEC (LNN)

RNP APCH - GPS.	MISSED APPROACH: Climb to 2300 direct HILEK and hold.
Rwy 5 helicopter visibility reduction below 3/4 SM NA.	

AWOS-3PT 119.225	CLEVELAND APP CON 125.35 346.325	UNICOM 122.725 (CTAF) 0
----------------------------	--	-----------------------------------



ELEV	626	TDZE	624
------	-----	------	-----



CATEGORY	A	B	C	D
LNAV MDA	1460-1 836 (900-1)	1460-1¼ 836 (900-1¼)	1460-2½ 836 (900-2½)	NA
CIRCLING	1460-1¼	834 (900-1¼)	1520-2¾ 894 (900-2¾)	NA

EC-2, 28 NOV 2024 to 26 DEC 2024

EC-2, 28 NOV 2024 to 26 DEC 2024