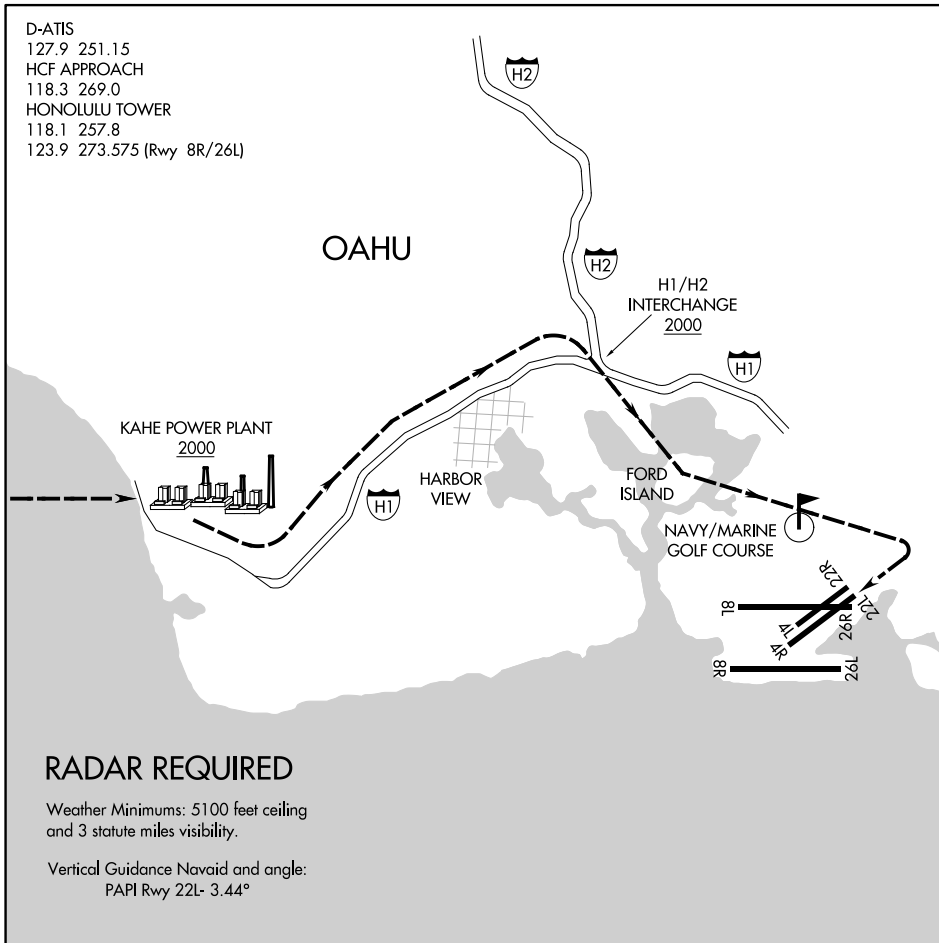


KAHE POWER PLANT VISUAL RWY 22L

HONOLULU, HAWAII

D-ATIS
 127.9 251.15
 HCF APPROACH
 118.3 269.0
 HONOLULU TOWER
 118.1 257.8
 123.9 273.575 (Rwy 8R/26L)



PAC, 31 OCT 2024 to 26 DEC 2024

PAC, 31 OCT 2024 to 26 DEC 2024

RADAR REQUIRED

Weather Minimums: 5100 feet ceiling and 3 statute miles visibility.

Vertical Guidance Navaid and angle: PAPI Rwy 22L- 3.44°

1 NM	2	3	4	5	6	7	8	9	10	11	12	13	14	15	16
------	---	---	---	---	---	---	---	---	----	----	----	----	----	----	----

KAHE POWER PLANT VISUAL APPROACH RWY 22L

PROCEDURE NOT AUTHORIZED AT NIGHT

RESTRICTED TO CAT I AND CAT II AIRCRAFT ONLY

Pilots may expect landing Runway 22R.

KAHE POWER PLANT VISUAL RWY 22L

HONOLULU, HAWAII