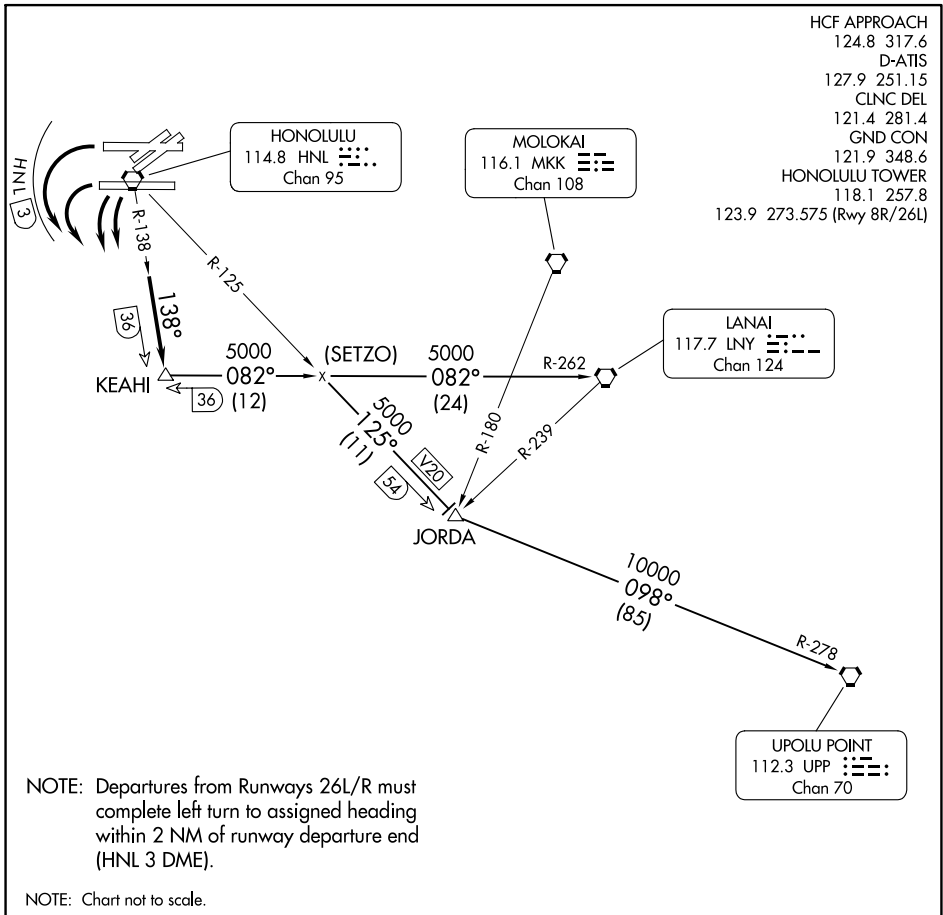


KEAH1 THREE DEPARTURE



PAC, 31 OCT 2024 to 26 DEC 2024

PAC, 31 OCT 2024 to 26 DEC 2024

DEPARTURE ROUTE DESCRIPTION

TAKEOFF RUNWAYS 22/26 ONLY: Turn left to heading assigned by tower, expect RADAR vectors to intercept HNL R-138; then via HNL R-138 to KEAH1 INT, maintain 5000'; then via (transition). Expect clearance to enroute altitude/flight level at JORDA INT or LNY VORTAC.

JORDA TRANSITION (KEAH13.JORDA): From over KEAH1 INT via LNY R-262 and HNL R-125 to JORDA INT.

LANAI TRANSITION (KEAH13.LNY): From over KEAH1 INT via LNY R-262 to LNY VORTAC.

UPOLU TRANSITION (KEAH13.UPP): From over KEAH1 INT via LNY R-262 and HNL R-125 to JORDA INT, thence via UPP R-278 to UPP VORTAC.

KEAH1 THREE DEPARTURE