

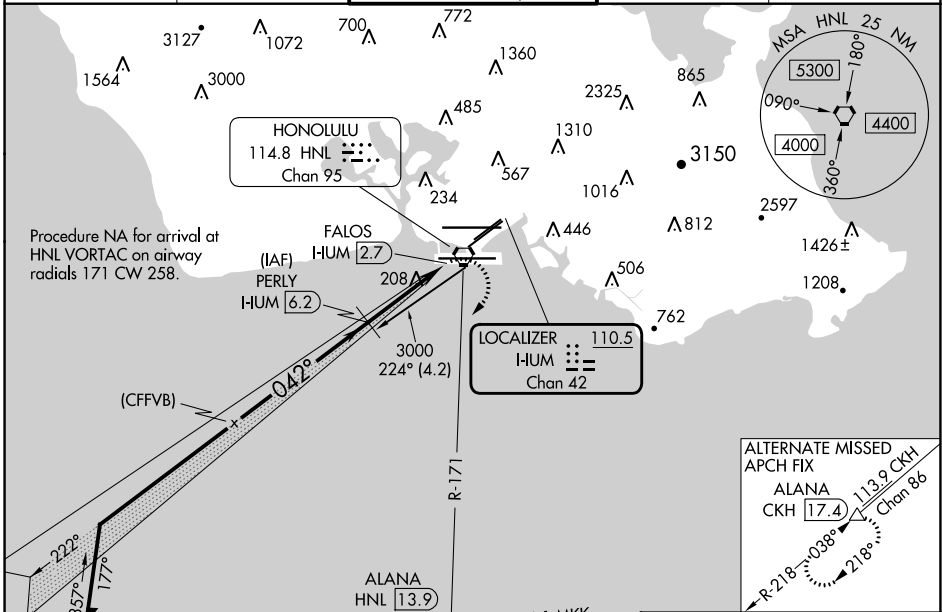
LOC/DME I-HUM 110.5 Chan 42	APP CRS 042°	Rwy Idg TDZE Apt Elev 8950 8 13
---	------------------------	---

LOC RWY 4R

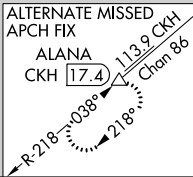
DANIEL K INOUE INTL (HNL) (PHNL)

DME required.	MALSRL 	MISSED APPROACH: Climbing right turn to 3000 on heading 220° and HNL VORTAC R-171 to ALANA INT/ HNL 13.9 DME and hold.
<p>▼ Circling Rwy 22R NA at night. For inop ALS, increase Cat E visibility to 1 3/8 SM. Circling NA for Cats A and B northwest of Rwys 8L and 22R. Circling NA for Cats C and D north of Rwy 8L-26R. Circling NA to sea lanes 4W, 8W, 22W, and 26W.</p>		

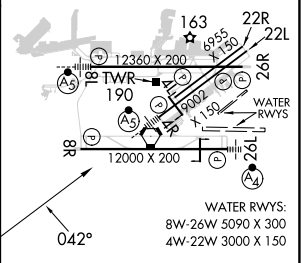
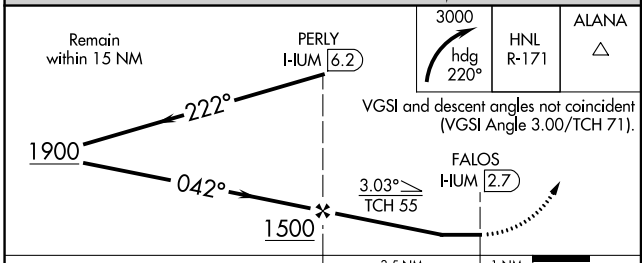
D-ATIS 127.9 251.15	HCF APPROACH 118.3 269.0	HONOLULU TOWER 118.1 257.8 123.9 273.575 (Rwy 8R/26L)	GND CON 121.9 348.6	CLNC DEL 121.4 281.4
-------------------------------	------------------------------------	---	-------------------------------	--------------------------------



Procedure NA for arrival at HNL VORTAC on airway radials 171 CW 258.



ELEV 13	D	TDZE 8
---------	----------	--------



CATEGORY	A	B	C	D	E
S-4R	460-3/4	452 (500-3/4)	460-7/8	452 (500-7/8)	
C CIRCLING	680-1 1/4 667 (700-1 1/4)	760-1 1/4 747 (800-1 1/4)	820-2 1/4 807 (900-2 1/4)	1400-3 1387 (1400-3)	NA

MIRL Rwy 4L-22R
REIL Rwys 4L, 8R, 22L, 22R, and 26R
HIRL Rwys 4R-22L, 8L-26R, and 8R-26L

PAC, 31 OCT 2024 to 26 DEC 2024

PAC, 31 OCT 2024 to 26 DEC 2024