

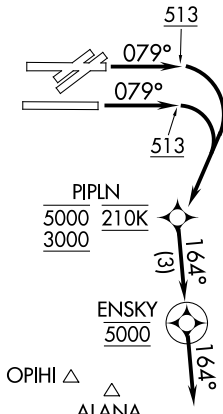
PIPLN ONE DEPARTURE (RNAV)  
(PPLN1, PPLN) 30ANZ0

DANIEL K INOUE INTL (HNL) (PHNL)  
HONOLULU, HAWAII

**TOP ALTITUDE:  
5000**

TAKEOFF MINIMUMS

Rwys 4L/R, 4W, 8W, 22L/R, 22W, 26L/R, 26W: NA - ATC.  
Rwys 8L/R: Standard with minimum climb of 500' per NM to 513.



PIPLN  
5000 210K  
3000

ENSKY  
5000

D-ATIS  
127.9 251.15  
CLNC DEL  
121.4 281.4  
GND CON  
121.9 348.6  
HONOLULU TOWER  
118.1 257.8  
123.9 273.575 (Rwy 8R/26L)  
HCF APPROACH  
124.8 317.6

(PPLN1, PPLN) 20030  
PIPLN ONE DEPARTURE (RNAV)

AL-754 (FAA)

DANIEL K INOUE INTL (HNL) (PHNL)  
HONOLULU, HAWAII

- NOTE: RNAV1.
- NOTE: RADAR required.
- NOTE: GPS required.
- NOTE: Turbo-jet and turbo-prop aircraft only.

(NARRATIVE ON FOLLOWING PAGE)  
(NOTES CONTINUED ON FOLLOWING PAGE)

NOTE: Chart not to scale.



DEPARTURE ROUTE DESCRIPTION

TAKEOFF RUNWAYS 8L/R: Climb on heading 079° to 513, then right turn direct PIPLN between 3000 and 5000 at 210K, thence. . . .

. . . .on track 164° to ENSKY, then on track 164° for RADAR vectors to assigned route/fix, maintain 5000 or as assigned by ATC. Expect clearnace to filed altitude/flight level within 10 minutes after departure.

- NOTE: ALANA departures expect direct/vectors to ALANA/V8/V16/V20/V21.
- NOTE: APACK departures expect direct/vectors to APACK/R463.
- NOTE: BINJO departures expect direct/vectors to BINJO/R584/B326.
- NOTE: CANON departures expect direct/vectors to CANON/V15.
- NOTE: CARRP departures expect direct/vectors to CARRP/A579.
- NOTE: CLUTS departures expect direct/vectors to CLUTS/R465.
- NOTE: DANNO departures expect direct/vectors to DANNO.
- NOTE: DOVRR departures expect direct/vectors to DOVRR/B596.
- NOTE: EBBER departures expect direct/vectors to EBBER/R577.
- NOTE: FITES departures expect direct/vectors to FITES/R578.
- NOTE: GECKO departures expect direct/vectors to GECKO/V4/V12/V16.
- NOTE: HAUNA departures expect direct/vectors to HAUNA/V8/V16/V20/V21/LNY.
- NOTE: HOOPA departures expect direct/vectors to HOOPA/A450.
- NOTE: KATHS departures expect direct/vectors to KATHS/A450.
- NOTE: KEOLA departures expect direct/vectors to KEOLA/A16.
- NOTE: KOA departures expect direct/vectors to KOA.
- NOTE: LILIA departures expect direct/vectors to LILIA/V15.
- NOTE: LNY departures expect direct/vectors to LNY.
- NOTE: OPIHI departures expect direct/vectors to OPIHI/V8/V16/V20/V21.
- NOTE: PALAY departures expect direct/vectors to PALAY/V2/V8/LNY.
- NOTE: PUPPI departures expect direct/vectors to PUPPI/V16.
- NOTE: SCOON departures expect direct/vectors to SCOON.
- NOTE: SYVAD departures expect direct/vectors to SYVAD/V16.
- NOTE: THOMA departures expect direct/vectors to THOMA.
- NOTE: UPP departures expect direct/vectors to UPP.
- NOTE: ZIGIE departures expect direct/vectors to ZIGIE/A331.

PAC, 31 OCT 2024 to 26 DEC 2024

PAC, 31 OCT 2024 to 26 DEC 2024