

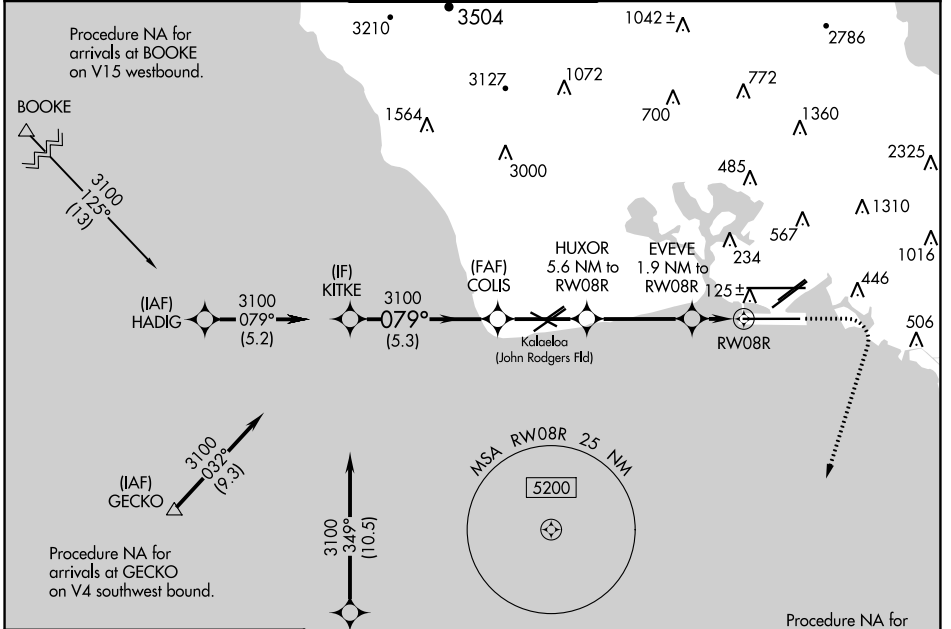
APP CRS	Rwy Idg	<b>12000</b>
<b>079°</b>	TDZE	<b>10</b>
	Apt Elev	<b>13</b>

# RNAV (GPS) RWY 8R

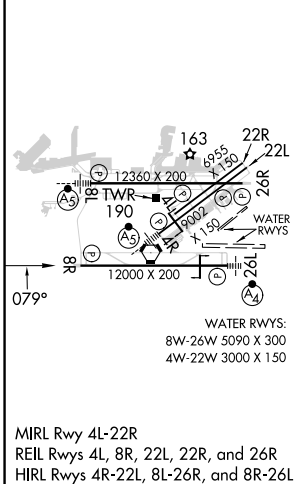
DANIEL K INOUEY INTL (HNL) (PHNL)

RNP APCH.	<p><b>▼</b> Circling Rwy 22R NA at night. Circling NA for Cats A and B northwest of Rws 8L and 22R. Circling NA for Cats C, D, and E north of Rwy 8L-26R. Circling NA to Sea Lanes 4W, 8W, 22W, and 26W. Cat E restricted to USAF/USN Aircraft.</p>		<p><b>MISSED APPROACH:</b> Climb to 500 then climbing right turn to 3100 direct ALANA and hold, continue climb-in-hold to 3100.</p>	
-----------	---	--	---	--

D-ATIS	HCF APPROACH	HONOLULU TOWER	GND CON	CLNC DEL
<b>127.9 251.15</b>	<b>118.3 269.0</b>	<b>118.1 257.8</b> <b>123.9 273.575 (Rwy 8R/26L)</b>	<b>121.9 348.6</b>	<b>121.4 281.4</b>



ELEV 13	<b>D</b>	TDZE 10
---------	----------	---------



	KITKE	COLIS	HUXOR	EVEVE	ALANA
	3100	3100	5.6 NM to RW08R	1.9 NM to RW08R	500
	079°	079°	3.25° TCH 52	0.8 NM to RW08R	3100
	5.3 NM	3.2 NM	3.7 NM	1.1 NM	0.8 NM
CATEGORY	A	B	C	D	E
LNAV MDA	360-1		350 (400-1)		
<b>C</b> CIRCLING	680-1 667 (700-1)	760-1 747 (800-1)	820-2¼ 807 (900-2¼)	1340-3 1327 (1400-3)	2020-3 2007 (2100-3)

PAC, 31 OCT 2024 to 26 DEC 2024

PAC, 31 OCT 2024 to 26 DEC 2024