

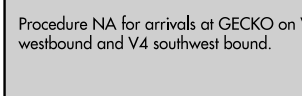
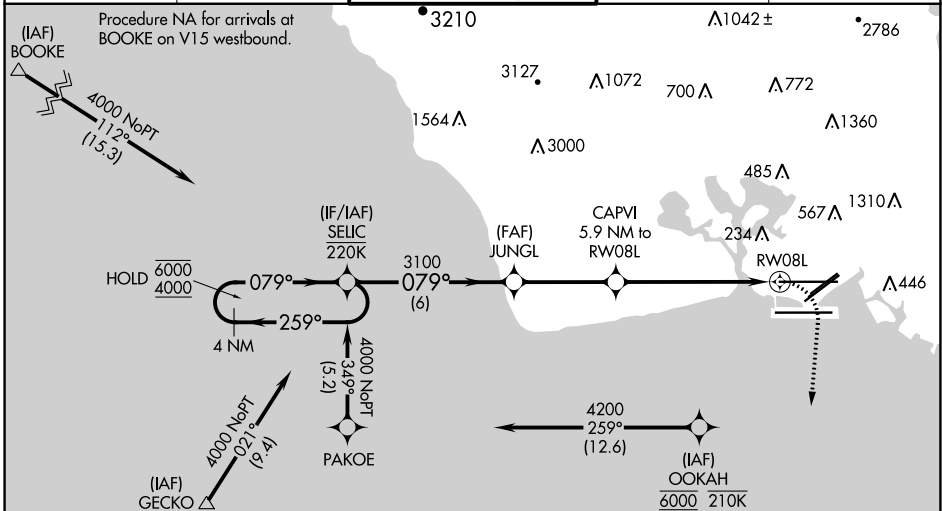
APP CRS	Rwy Idg 12312
079°	TDZE 13
	Apt Elev 13

RNAV (GPS) Y RWY 8L

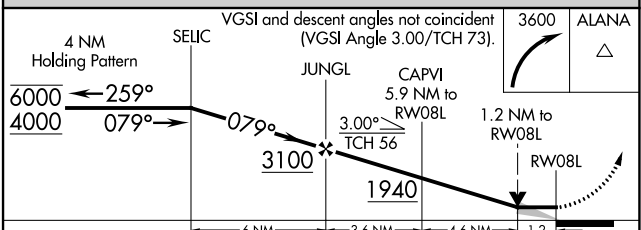
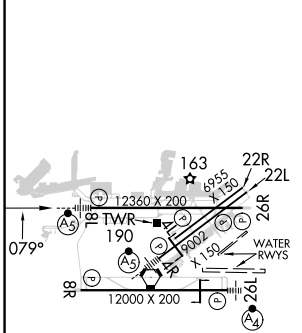
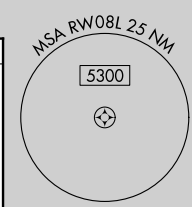
DANIEL K INOUEY INTL (HNL) (PHNL)

RNP APCH - GPS.	MALSRL AS	MISSED APPROACH: Climbing right turn to 3600 direct ALANA and hold, continue climb-in-hold to 3600.
<p>⚠ Circling Rwy 22R NA at night. For inop ALS, increase Cats C, D, and E visibility to 1 3/8 SM. Circling NA to sea lanes 4W, 8W, 22W, and 26W. Circling NA for Cats A and B northwest of Rwy 8L-22R. Circling NA for Cats C and D north of Rwy 8L-26R. OOKAH transition Rwy for Cat E aircraft. Cat E restricted to USAF/USN aircraft</p>		

D-ATIS 127.9 251.15	HCF APPROACH 118.3 269.0	HONOLULU TOWER 118.1 257.8 123.9 273.575 (Rwy 8R/26L)	GND CON 121.9 348.6	CLNC DEL 121.4 281.4
-------------------------------	------------------------------------	---	-------------------------------	--------------------------------



ELEV 13	D	TDZE 13
---------	----------	---------



CATEGORY	A	B	C	D	E
LNAV MDA	480-1/2	467 (500-1/2)	480-1 467 (500-1)		
C CIRCLING	680-1	667 (700-1)	820-2 1/4 807 (900-2 1/4)	1280-3 1267 (1300-3)	NA

MIRL Rwy 4L-22R
REIL Rwy 4L, 8R, 22L, 22R, and 26R
HIRL Rwy 4R-22L, 8L-26R, and 8R-26L

PAC, 31 OCT 2024 to 26 DEC 2024

PAC, 31 OCT 2024 to 26 DEC 2024