

VORTAC HNL 114.8 Chan 95	APP CRS 305°	Rwy Idg TDZE Apt Elev 13	N/A N/A 13
--	------------------------	---------------------------------------	-------------------------

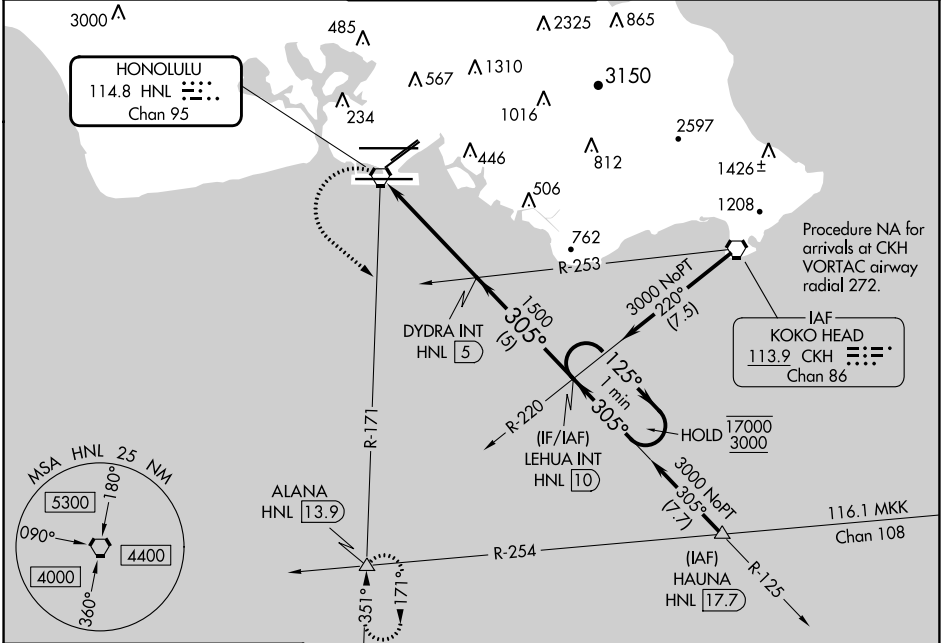
VOR or TACAN-A

DANIEL K INOUEY INTL (HNL) (PHNL)

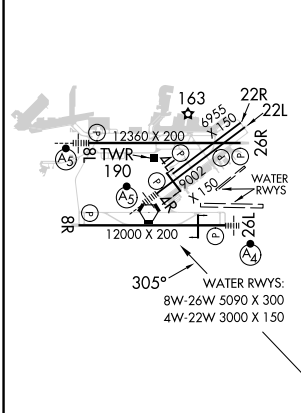
▼ Circling Rwy 22R NA at night. Circling NA for Cats A and B northwest of Rwys 8L and 22R. Circling NA for Cats C and D north of Rwy 8L-26R. Circling NA to sea lanes 4W, 8W, 22W, and 26W.

▲ MISSED APPROACH: Climbing left turn to 3000 on HNL R-171 to ALANA INT/HNL 13.9 DME and hold.

D-ATIS 127.9 251.15	HCF APPROACH 118.3 269.0	HONOLULU TOWER 118.1 257.8 123.9 273.575 (Rwy 8R/26L)	GND CON 121.9 348.6	CLNC DEL 121.4 281.4
-------------------------------	------------------------------------	---	-------------------------------	--------------------------------



ELEV 13	D
----------------	----------

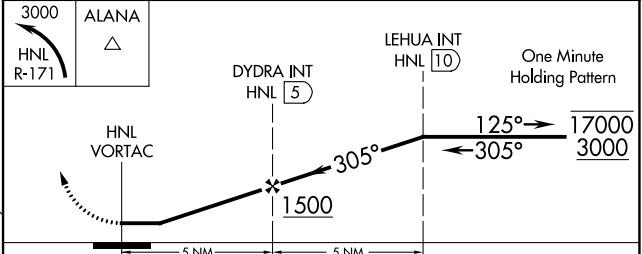


MIRL Rwy 4L-22R
REIL Rwys 4L, 8R, 22L, 22R, and 26R
HIRL Rwys 4R-22L, 8L-26R, and 8R-26L

Procedure NA for arrivals at CKH VORTAC airway radial 272.

IAF KOKO HEAD 113.9 CKH Chan 86

Procedure NA for arrivals at HAUNA on V8 eastbound.



CATEGORY	A	B	C	D
C CIRCLING	680-1 667 (700-1)	760-1 747 (800-1)	820-2¼ 807 (900-2¼)	1400-3 1387 (1400-3)

PAC, 31 OCT 2024 to 26 DEC 2024

PAC, 31 OCT 2024 to 26 DEC 2024