

GECKO TWO DEPARTURE (GECKO2•GECKO)

AL-2832 [USA]

WAHIAWA, OAHU I, HAWAII

HCF APP
124.8 317.6 (E)
118.3 269.0 (W)

DME required	Rwy	Knots	60	120	180	240	300	360
*06 (a)	V/V(fpm)	365	730	1095	1460	1825	2190	
†06 (b)	V/V(fpm)	252	504	756	1008	1260	1512	

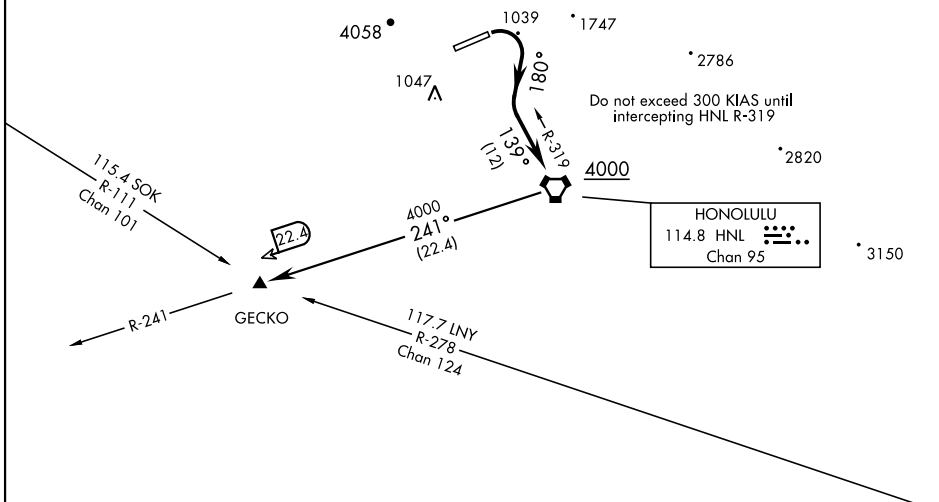
* Minimum † ATC Climb Rate

(a) to 3600

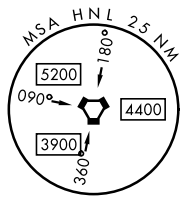
(b) to HNL to 4000

PAC, 31 OCT 2024 to 26 DEC 2024

PAC, 31 OCT 2024 to 26 DEC 2024



HONOLULU
114.8 HNL
Chan 95



DEPARTURE ROUTE DESCRIPTION

TAKEOFF RWY 6: Climbing right turn via heading 180° and HNL VORTAC R-319 to cross HNL at or above 4000, then...

GECKO TRANSITION: ...via HNL R-241 to GECKO (HNL R-241/22.4 DME).

GECKO TWO DEPARTURE (GECKO2•GECKO)

07SEP23

WAHIAWA, OAHU I, HAWAII

WHEELER AAF (PHHI)