

KOKO HEAD TWO DEPARTURE (CKH2.CKH)

[USA]

WHEELER AAF (PHHI)

WAHIAWA, OAHU I, HAWAII

HCF APP  
124.8 317.6 (E)  
118.3 269.0 (W)

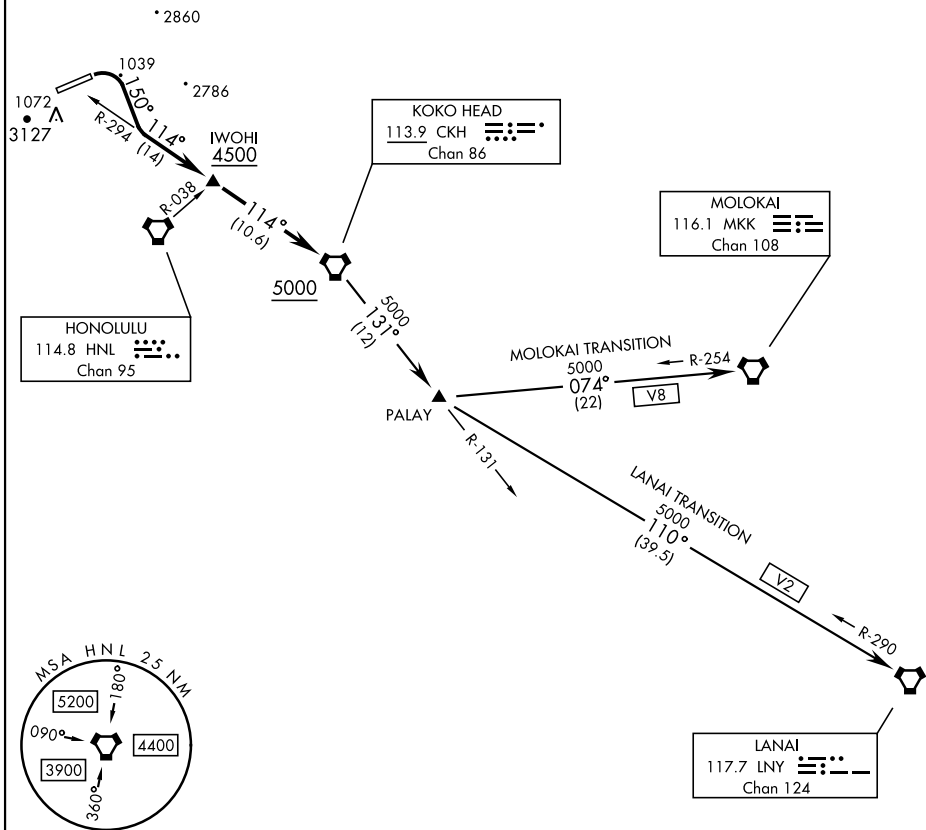
**TOP ALTITUDE**  
**5000**

Rwy	Knots	60	120	180	240	300	360
*06 (C)	V/V(fpm)	365	730	1095	1460	1825	2190
†06 (B)	V/V(fpm)	302	604	906	1208	1510	1812

\* Minimum † ATC Climb Rate

(C) to 3600

(B) to IWOHI to 4500



PAC, 31 OCT 2024 to 26 DEC 2024

PAC, 31 OCT 2024 to 26 DEC 2024



DEPARTURE ROUTE DESCRIPTION

TAKEOFF RWY 06: Climbing right turn to heading 150° to intercept CKH VORTAC R-294 to cross IWOHI at or above 4500, then on CKH R-294 to cross CKH at or above 5000, thence...

LANAI TRANSITION (KOKOH2.LNY): ...from over CKH on R-131 to PALAY then on LNY VORTAC R-290 to LNY.

MOLOKAI TRANSITION (KOKOH2.MKK): ...from over CKH on R-131 to PALAY then on MKK VORTAC R-254 to MKK.

KOKO HEAD TWO DEPARTURE (CKH2.CKH)

31OCT24

WAHIAWA, OAHU I, HAWAII

WHEELER AAF (PHHI)