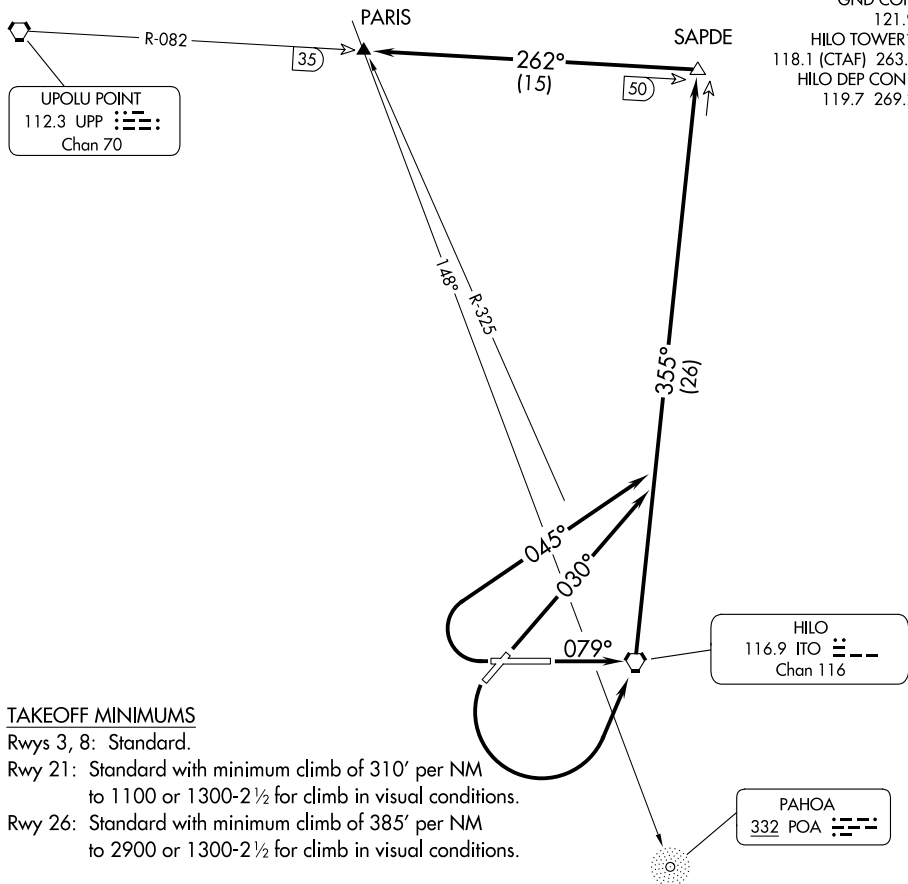


(PARIS4.PARIS) 24025

# PARIS FOUR DEPARTURE (OBSTACLE)

AL-756 (FAA)

HILO INTL (ITO)(PHTO)  
HILO, HAWAII



ATIS 126.4  
 GND CON 121.9  
 HILO TOWER\* 118.1 (CTAF) 263.1  
 HILO DEP CON\* 119.7 269.2

### TAKEOFF MINIMUMS

Rwys 3, 8: Standard.

Rwy 21: Standard with minimum climb of 310' per NM to 1100 or 1300-2½ for climb in visual conditions.

Rwy 26: Standard with minimum climb of 385' per NM to 2900 or 1300-2½ for climb in visual conditions.

(CONTINUED ON FOLLOWING PAGE)

NOTE: Chart not to scale.

### DEPARTURE ROUTE DESCRIPTION

**TAKEOFF RUNWAY 3:** Climb heading 030° and ITO R-355 to SAPDE INT, thence. . . .

**TAKEOFF RUNWAY 8:** Climb heading 079° to ITO VORTAC and ITO R-355 to SAPDE INT, thence. . . .

**TAKEOFF RUNWAY 21:** Climbing left turn direct ITO VORTAC and ITO R-355 to SAPDE INT, or climb in visual conditions to cross ITO VORTAC northbound at or above 1200 MSL, then via R-355 to SAPDE INT, thence. . . .

**TAKEOFF RUNWAY 26:** Climbing right turn via heading 045° and ITO R-355 to SAPDE INT, or climb in visual conditions to cross ITO VORTAC northbound at or above 1200 MSL, then via R-355 to SAPDE INT, thence. . . .

. . . .proceed via UPP R-082 to PARIS INT.

# PARIS FOUR DEPARTURE (OBSTACLE)

(PARIS4.PARIS) 11FEB10

HILO, HAWAII  
HILO INTL (ITO)(PHTO)

PAC, 31 OCT 2024 to 26 DEC 2024

PAC, 31 OCT 2024 to 26 DEC 2024

TAKEOFF OBSTACLE NOTES

Rwy 3: Numerous trees and WSK beginning 395' from DER, 68' left of centerline, up to 86' AGL/115' MSL.

Numerous trees beginning 325' from DER, 137' right of centerline, up to 66' AGL/95' MSL.

Rwy 8: Tree 1198' from DER, 480' left of centerline, 37' AGL/70' MSL.

Numerous trees beginning 414' from DER, 328' right of centerline, up to 46' AGL/79' MSL.

Rwy 21: Numerous trees and poles beginning 1077' from DER, 272' left of centerline, up to 70' AGL/490' MSL.

Numerous trees and poles beginning 236' from DER, 43' right of centerline, up to 83' AGL/362' MSL.

Vehicles on road beginning 234' from DER, 260' left of centerline, 15' AGL/58' MSL.

Rwy 26: Numerous vehicles beginning 6' from DER, 452' right of centerline, up to 15' AGL/39' MSL.

Numerous trees and light poles beginning 542' from DER, 471' left of centerline, up to 86' AGL/92' MSL.

Numerous trees beginning 1645' from DER, 266' right of centerline, up to 93' AGL/119' MSL.

Windsock 3' from DER, 269' right of centerline, 19' AGL/46' MSL.

RADAR reflector 373' from DER, 346' right of centerline, 10' AGL/37' MSL.

PAC, 31 OCT 2024 to 26 DEC 2024

PAC, 31 OCT 2024 to 26 DEC 2024