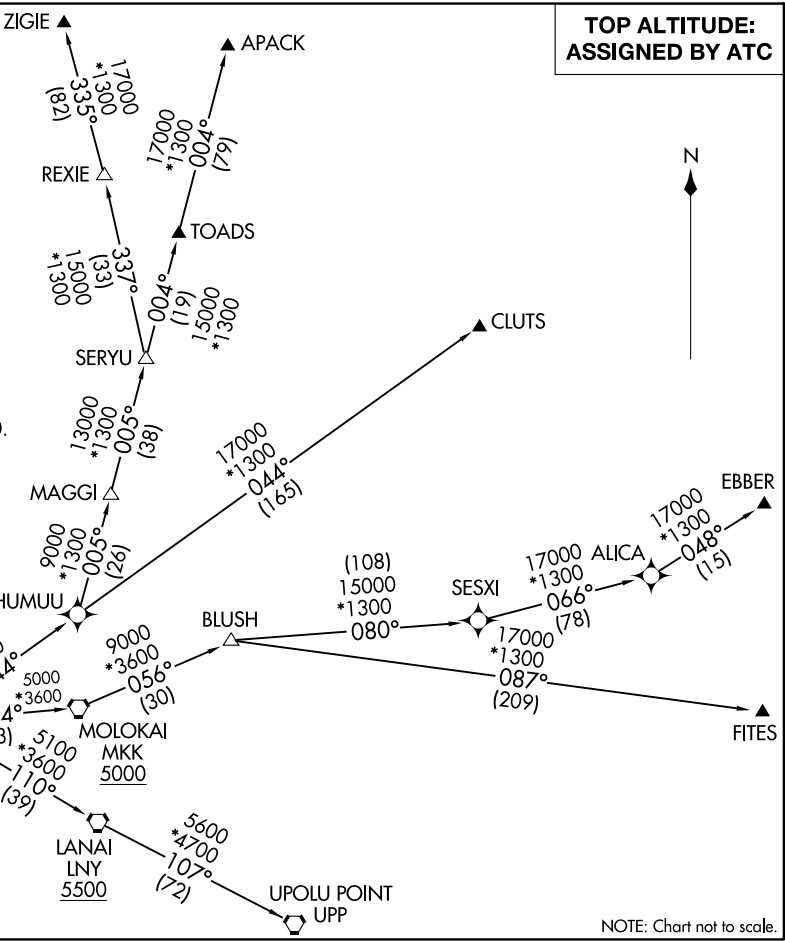


(JELI) JELIE 24193
KALAELIOA (JOHN RODGERS FLD) (JRF)(PHTR)
KAROLEI, HAWAII
AL-761 (FAA)

**TOP ALTITUDE:
ASSIGNED BY ATC**

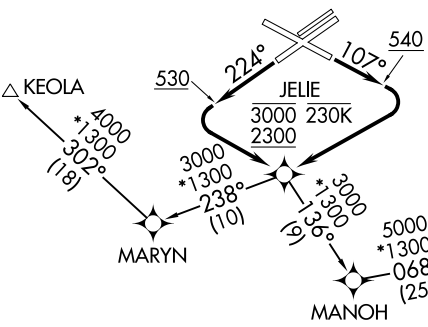


ATIS
119.8
CLNC DEL
121.7 380.5
GND CON
123.8 336.4
KALAELIOA TOWER*
132.6 340.2
HCF DEP CON
118.3 269.0

NOTE: RNAV1.
NOTE: RADAR required.
NOTE: GPS required.
NOTE: Turbojet and turboprop aircraft only.

TAKEOFF MINIMUMS

Rwys 4L/R, 22R, 29: NA- ATC.
Rwy 11: Standard.
Rwy 22L: Standard with minimum climb of 260' per NM to 530.



(NARRATIVE ON FOLLOWING PAGE)

NOTE: Chart not to scale.

JELIE ONE DEPARTURE (RNAV)
(JELI) JELIE 25FEB21
KAROLEI, HAWAII
KALAELIOA (JOHN RODGERS FLD) (JRF)(PHTR)



DEPARTURE ROUTE DESCRIPTION

TAKEOFF RUNWAY 11: Climb on heading 107° to 540, then climbing right turn direct JELIE. Cross JELIE between 2300 and 3000, at or below 230K, thence. . . .

TAKEOFF RUNWAY 22L: Climb on heading 224° to 530, then climbing left turn direct JELIE. Cross JELIE between 2300 and 3000, at or below 230K, thence. . . .

. . . (transition), maintain ATC assigned altitude. Expect filed altitude 10 minutes after departure.

APACK TRANSITION (JELIE1 .APACK)

CLUTS TRANSITION (JELIE1 .CLUTS)

EBBER TRANSITION (JELIE1 .EBBER)

FITES TRANSITION (JELIE1 .FITES)

KEOLA TRANSITION (JELIE1 .KEOLA)

MOLOKAI TRANSITION (JELIE1 .MKK)

UPOLU POINT TRANSITION (JELIE1 .UPP)

ZIGIE TRANSITION (JELIE1 .ZIGIE)

PAC, 31 OCT 2024 to 26 DEC 2024

PAC, 31 OCT 2024 to 26 DEC 2024