

WAAS CH 61105 W03A	APP CRS 030°	Rwy ldg 6801 TDZE 640 Apt Elev 640
--	------------------------	---

RNAV (GPS) RWY 3

CHARLOTTESVILLE-ALBEMARLE (CHO)

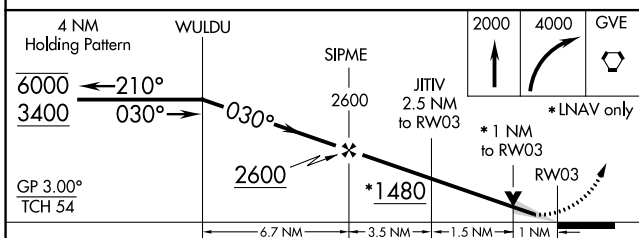
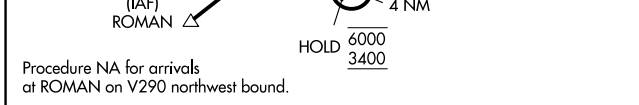
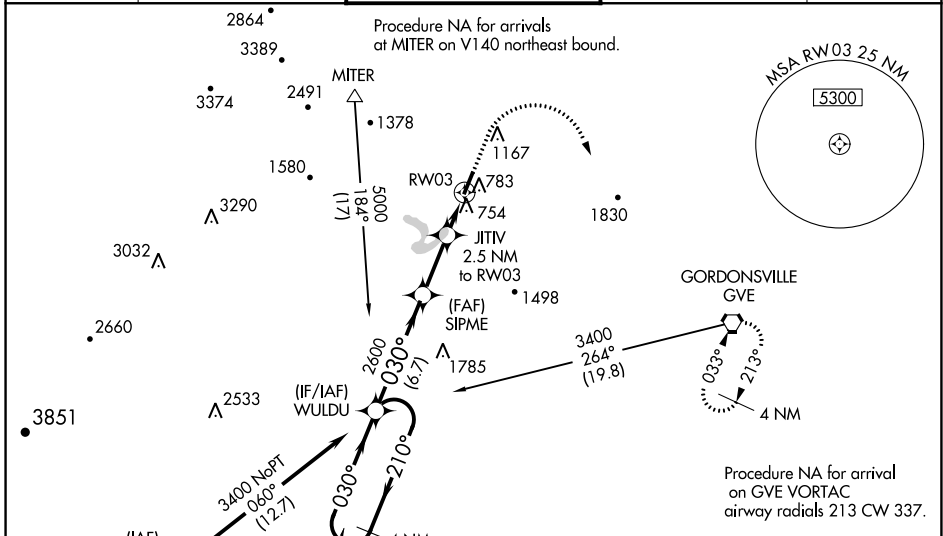
RNP APCH.

▼ For uncompensated Baro-VNAV systems, LNAV/VNAV NA below -12°C or above 54°C.
 ▲ When local altimeter setting not received, use Orange altimeter setting and increase LPV DA to 910, LNAV/VNAV DA to 985, and all MDA 80 feet; increase LNAV/VNAV all Cats visibility 1/2 SM, LNAV Cat C/D visibility 1/4 SM and Circling Cats C/D visibility 1/2 SM. Baro-VNAV and VDP NA when using Orange altimeter setting. For Inop ALS, increase LNAV/VNAV all Cats visibility to 3/8 SM and LNAV Cats C/D visibility to 1 SM. For Inop ALS when using Orange altimeter setting, increase LPV all Cats visibility to 3/8 SM, and LNAV/VNAV all Cats visibility to 1 SM.

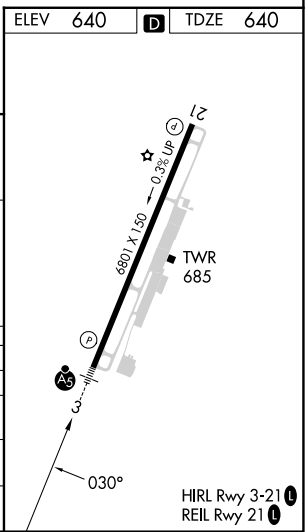
MALSRL

MISSED APPROACH: Climb to 2000 then climbing right turn to 4000 direct GVE VORTAC and hold.

ATIS 118.425	POTOMAC APP CON 132.85 323.125	CHARLOTTESVILLE TOWER ★ 124.5 (CTAF) 338.275	GND CON 121.9 338.275	UNICOM 122.95
------------------------	--	--	---------------------------------	-------------------------



CATEGORY	A	B	C	D
LPV DA	840-1/2		200 (200-1/2)	
LNAV/VNAV DA	915-1/2		275 (300-1/2)	
LNAV MDA	1020-1/2	380 (400-1/2)	1020-5/8	380 (400-5/8)
CIRCLING	1100-1	460 (500-1)	1500-2 1/2 860 (900-2 1/2)	1500-2 3/4 860 (900-2 3/4)



NE-3, 28 NOV 2024 to 26 DEC 2024

NE-3, 28 NOV 2024 to 26 DEC 2024