



LOC/DME I-ADS 110.1 Chan 38	APP CRS 157°	Rwy Idg 6224 TDZE 644 Apt Elev 645
---	------------------------	---

ILS or LOC RWY 16

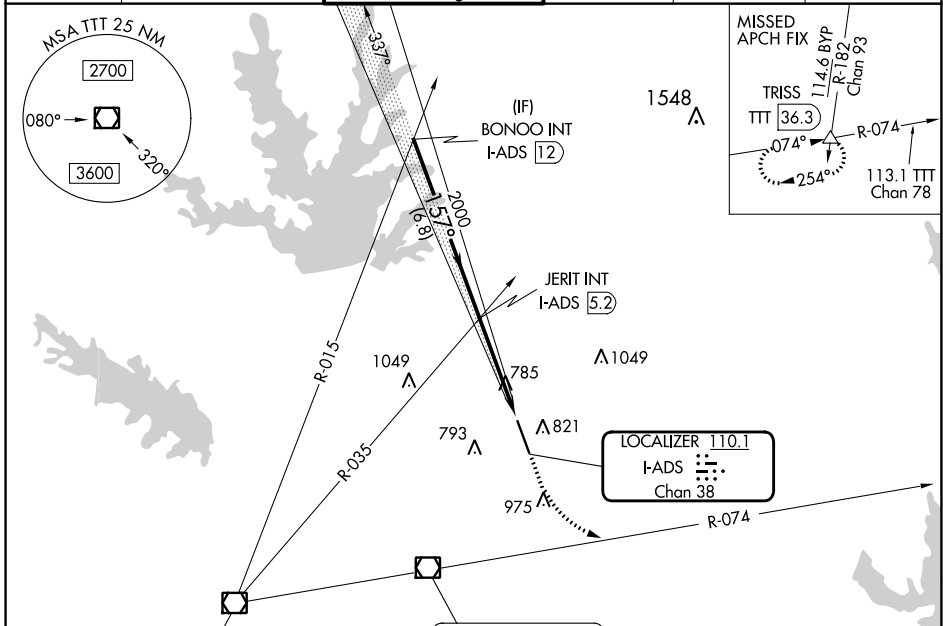
ADDISON (ADS)

RADAR required for procedure entry.

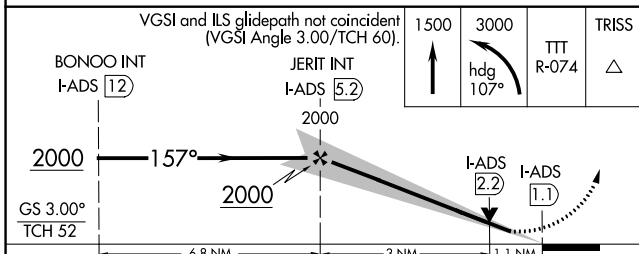
MALSR  

MISSED APPROACH: Climb to 1500 then climbing left turn to 3000 on heading 107° and TTT VOR/DME R-074 to TRISS INT/TTT 36.3 DME and hold.

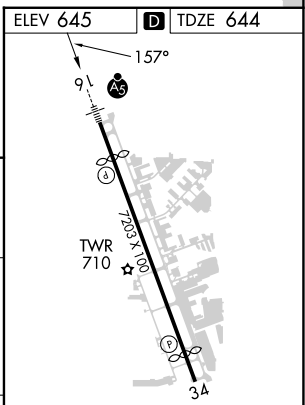
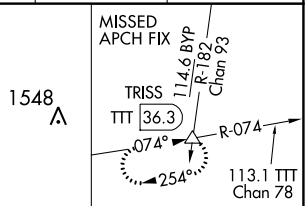
ATIS 133.4	LONE STAR APP CON 124.3 282.275	ADDISON TOWER* 126.0 (CTAF) 0 239.0	GND CON 121.6	CLNC DEL 119.55	UNICOM 122.95
----------------------	---	---	-------------------------	---------------------------	-------------------------



MAVERICK 113.1 TTT = Chan 78	COWBOY 116.2 CVE Chan 109
------------------------------------	---------------------------------



CATEGORY	A	B	C	D
S-ILS 16		894-1	250 (300-1)	
S-LOC 16		1040-1	396 (400-1)	
CIRCLING	1200-1	555 (600-1)	1280-1¾ 635 (700-1¾)	1400-2½ 755 (800-2½)



REIL Rwy 34					
HIRL Rwy 16-34					
FAF to MAP 4.1 NM					
Knots	60	90	120	150	180
Min:Sec	4:06	2:44	2:03	1:38	1:22

SC-2, 28 NOV 2024 to 26 DEC 2024

SC-2, 28 NOV 2024 to 26 DEC 2024