

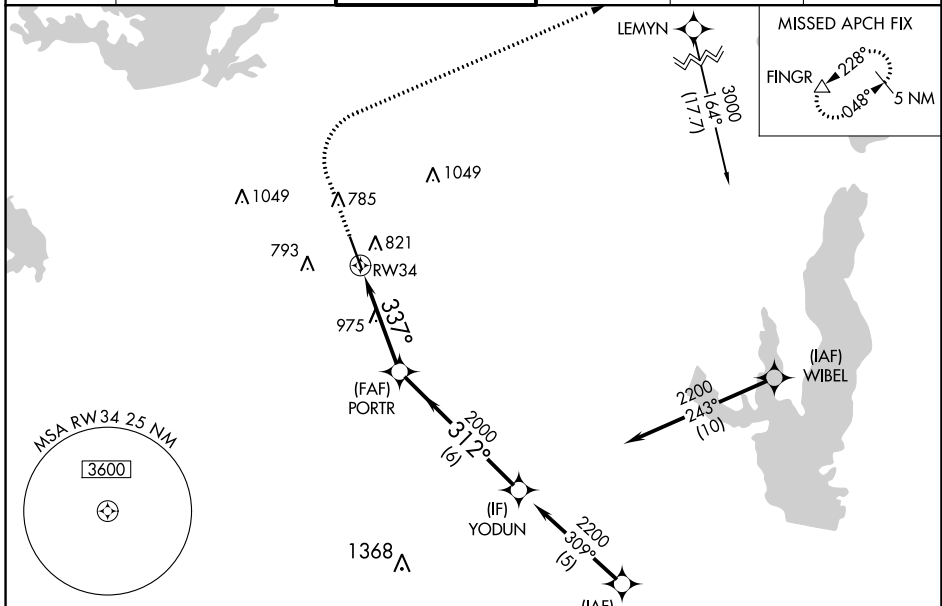
RNAV (GPS) RWY 34

ADDISON (ADS)

APP CRS 337°	Rwy Idg 6431
	TDZE 645
	Apt Elev 645

RNP APCH-GPS.		MISSED APPROACH: Climb to 1500 then climbing right turn to 5000 direct FINGR and hold.			
Rwy 34 helicopter visibility reduction below 3/4 SM NA.					

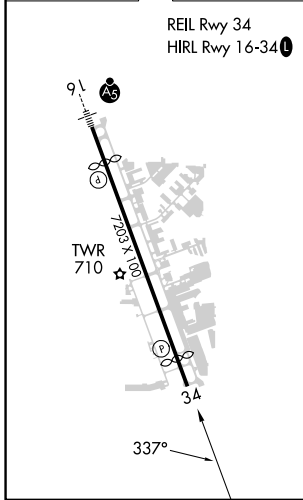
ATIS 133.4	LONE STAR APP CON 124.3 282.275	ADDISON TOWER * 126.0 (CTAF) 239.0	GND CON 121.6	CLNC DEL 119.55	UNICOM 122.95
----------------------	---	--	-------------------------	---------------------------	-------------------------



SC-2, 28 NOV 2024 to 26 DEC 2024

SC-2, 28 NOV 2024 to 26 DEC 2024

ELEV 645	D TDZE 645
----------	-------------------



1500	5000	FINGR	VGSIs and descent angles not coincident (VGSi Angle 3.00/TCH 60)		YODUN
					2200
		PORTR	312°		2000
		RWY 34	1.7 NM		2.4 NM
			6 NM		
CATEGORY	A	B	C	D	
LNAV MDA	1240-1	595 (600-1)	1240-1 3/4	595 (600-1 3/4)	
C CIRCLING	1240-1	595 (600-1)	1280-1 3/4 635 (700-1 3/4)	1400-2 1/2 755 (800-2 1/2)	