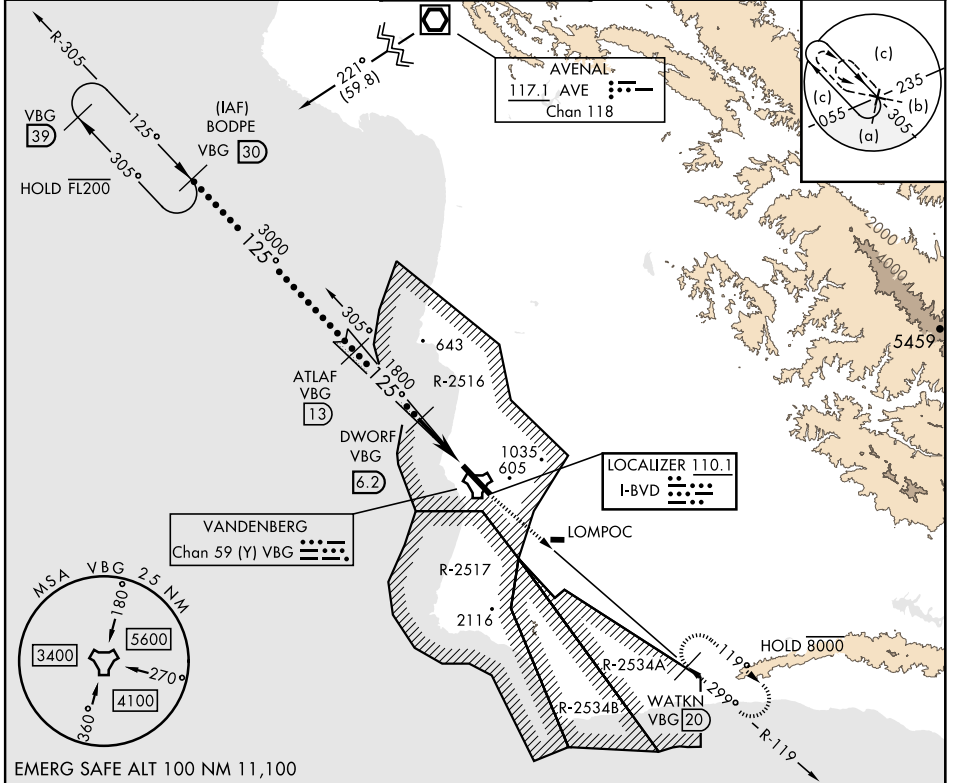


# HI-ILS or LOC/DME RWY 12

LOC I-BVD <b>110.1</b>	APCH CRS <b>125°</b>	Rwy Idg <b>15,000</b> TDZE <b>265</b> Arprt Elev <b>368</b>	[USSF]	VANDENBERG SFB (KVBG)
DME required			ALSIF-2	MISSED APPROACH: Climb out VBG TACAN R-119 until 20 DME (WATKN) and hold. Continue climb in hold maintain 7000.
* When ALS inop, increase RVR to 40 and vis to ¾ mile. ** When ALS inop, increase CAT CDE vis to 1¼ mile.			(A)	
ATIS <b>133.125 257.975</b>	SANTA BARBARA APP/DEP CON <b>124.15 327.8</b>	TOWER ★ <b>124.95</b> (CTAF) <b>326.2</b>	GND CON <b>121.75 275.8</b>	CLNC DEL <b>121.75 275.8</b>



BODPE VBG 30 (30)	ATLAS VBG 13 (13)	DWORF VBG 6.2 (6.2)	7000 VBG R-119	WATKN VBG 20 (20)	ELEV 368	TDZE 265
FL180	3000	1800	4.3 NM	0.5 NM	125°	
GS 3.00° TCH 52	VGS1 and descent angles not coincident				315 (P)	
					284 (A)	
					15,000 × 200	
					0.9% UP	
					TWR 440	
					HIRL Rwy 12-30	
					30 (A)	

CATEGORY	C	D	E
S-ILS 12 *	465/24	200 (100-½)	
S-LOC/DME 12 **	700/40	435 (400-¾)	
CIRCLING	1020-1¾ 652 (700-1¾)	1180-2¾ 812 (900-2¾)	1560-3 1192 (1200-3)

# HI-ILS or LOC/DME RWY 12

SW-3, 28 NOV 2024 to 26 DEC 2024

SW-3, 28 NOV 2024 to 26 DEC 2024