

HI-TACAN RWY 30

TACAN VBG Chan 59(Y)	APCH CRS 299°	Rwy Idg 15,000 TDZE 368 Arpt Elev 368
--------------------------------	-------------------------	--

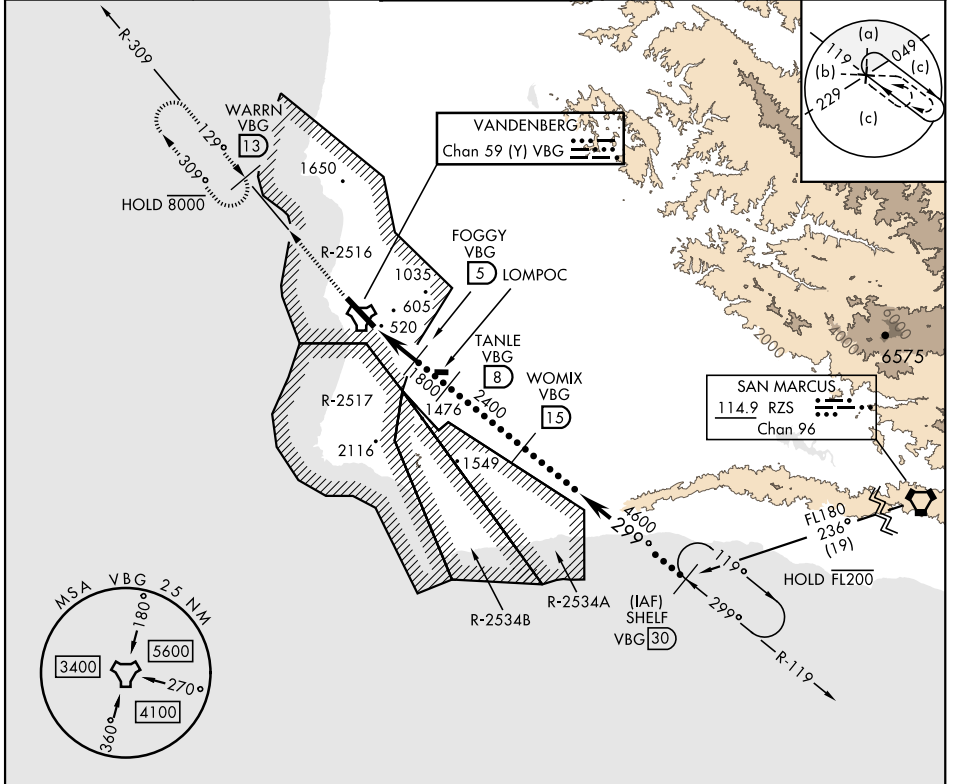
[USSF]

VANDENBERG SFB (KVBG)

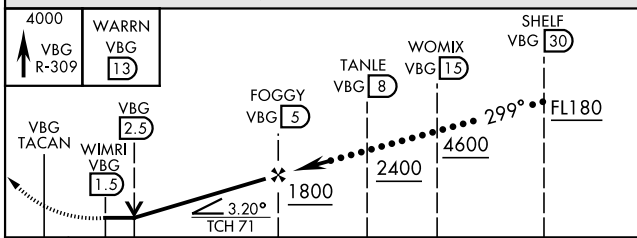
ALSF-2  MISSED APPROACH: Climb out VBG TACAN R-309 to WARRN and hold. Continue climb in hold maintain 4000.

*When ALS inop, increase vis to 1 1/2 miles.

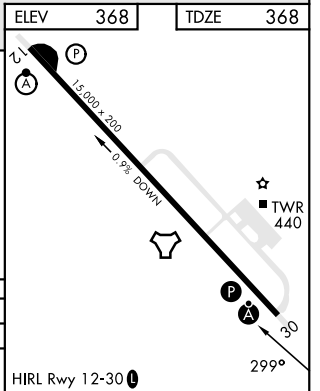
ATIS 133.125 257.975	SANTA BARBARA APP/DEP CON 124.15 327.8	TOWER ★ 124.95 0 (CTAF) 326.2	GND CON 121.75 275.8	CLNC DEL 121.75 275.8
--------------------------------	---	--	--------------------------------	---------------------------------



EMERG SAFE ALT 100 NM 11,100



CATEGORY	C	D	E
S-30*	920/60	552 (600-1 1/2)	
CIRCLING	1020-1 3/4 652 (700-1 3/4)	1180-2 3/4 812 (900-2 3/4)	1560-3 1192 (1200-3)



HI-TACAN RWY 30

SW-3, 28 NOV 2024 to 26 DEC 2024

SW-3, 28 NOV 2024 to 26 DEC 2024