

# TACAN RWY 30

VANDENBERG SFB (KVBG)

TACAN VBG Chan <b>59(Y)</b>	APCH CRS <b>299°</b>	Rwy Idg <b>15,000</b> TDZE <b>368</b> Arprt Elev <b>368</b>
--------------------------------	-------------------------	---

[USSF]

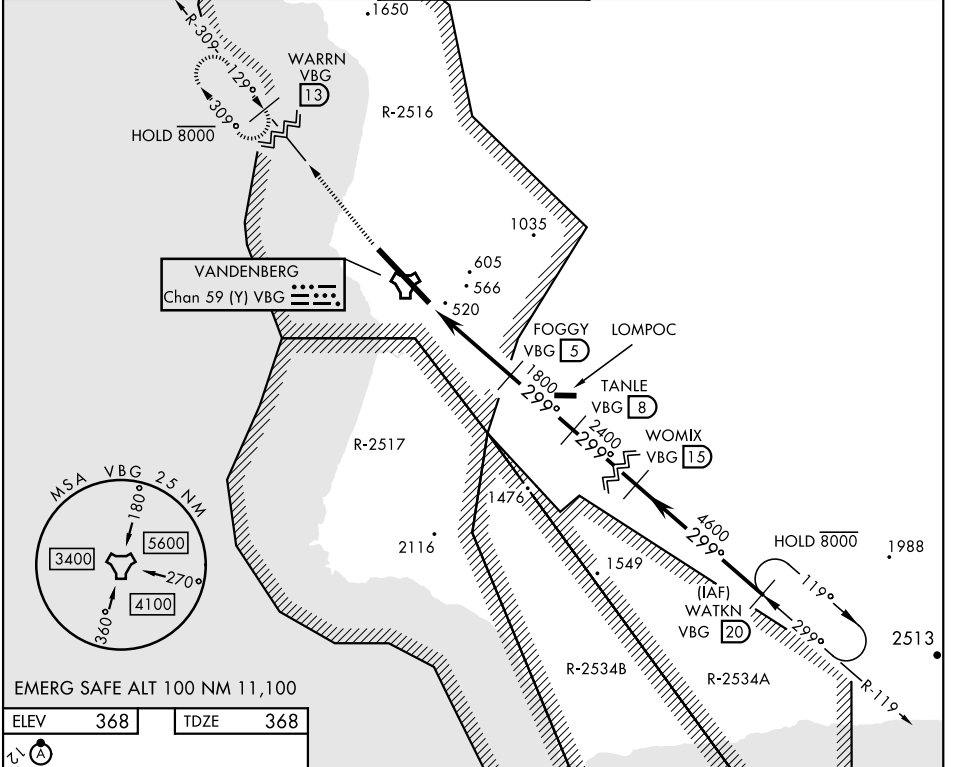
**▼** \* When ALS inop, increase CAT AB RVR to 55 and vis to 1 mile, CAT CDE vis to 1½ miles.

ALSF-2



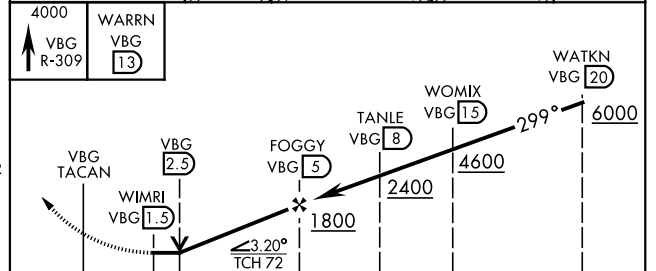
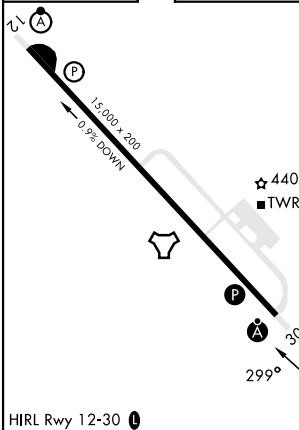
MISSED APPROACH: Climb out VBG TACAN R-309 to WARRN and hold. Continue climb in hold maintain 4000.

ATIS <b>133.125 257.975</b>	SANTA BARBARA APP/DEP CON <b>124.15 327.8</b>	TOWER★ (CTAF) <b>124.95 326.2</b>	GND CON <b>121.75 275.8</b>	CLNC DEL <b>121.75 275.8</b>
--------------------------------	---	--------------------------------------	--------------------------------	---------------------------------



EMERG SAFE ALT 100 NM 11,100

ELEV	368	TDZE	368
------	-----	------	-----



CATEGORY	A	B	C	D	E
S-30 *	920/24	552 (600-½)	920/60	552 (600-1½)	
<b>C</b> CIRCLING	980-1 612 (700-1)	1000-1 632 (700-1)	1020-1¾ 652(700-1¾)	1180-2¾ 812(900-2¾)	1560-3 1192(1200-3)

# TACAN RWY 30