

MARYSVILLE, CALIFORNIA

HI-ILS or LOC Z RWY 33

LOC I-MIZ 109.5	APCH CRS 325°	Rwy ldg 12,001	TDZE 105	Arprt Elev 113
---------------------------	-------------------------	-------------------	-------------	-------------------

(USAF)

BEALE AFB (KBAB)

RADAR or DME required

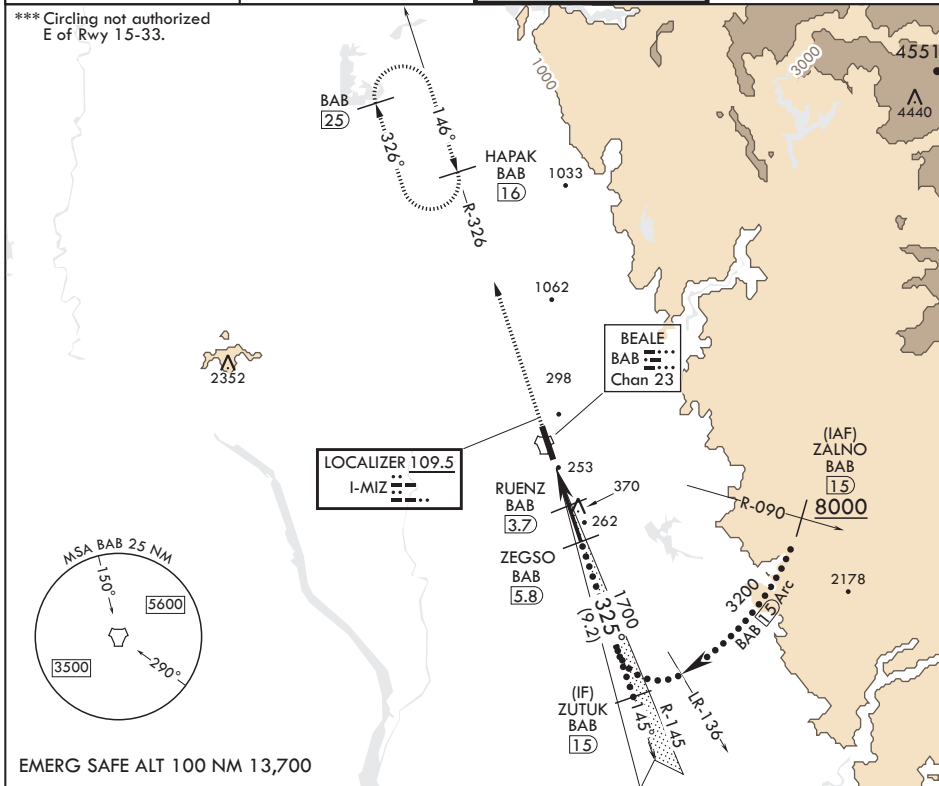
▼ * When ALS inop, increase CAT CDE RVR to 40 and vis to 3/4 mile.
 ** When ALS inop, increase CAT CDE RVR to 60 vis to 1 1/8 miles.



MISSED APPROACH: Climb to 3600 intercept BAB R-326 to HAPAK and hold.

ATIS* 124.55 273.5	NORCAL APP CON 125.4 259.1	TOWER* 119.4 284.75	GND CON 121.6 257.75
------------------------------	--------------------------------------	-------------------------------	--------------------------------

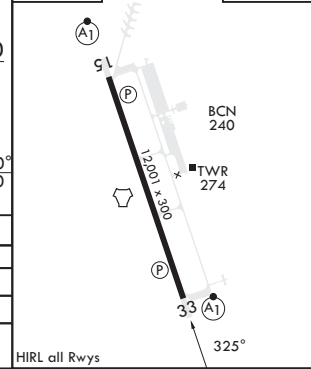
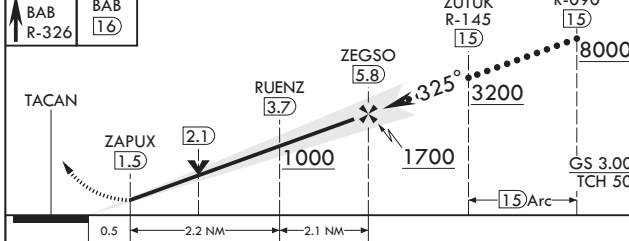
*** Circling not authorized E of Rwy 15-33.



SW-2, 28 NOV 2024 to 26 DEC 2024

SW-2, 28 NOV 2024 to 26 DEC 2024

3600 BAB R-326	HAPAK BAB 16	ZUTUK R-145 15	ZALNO R-090 15	ELEV 113	TDZE 105
----------------	--------------	----------------	----------------	----------	----------



CATEGORY	C	D	E
S-ILS 33**	305/24	200	(200-1/2)
S-LOC 33**	520/40	415	(500-3/4)
◻ CIRCLING***	600-1 1/2 487 (500-1 1/2)	800-2 1/4 687 (700-2 1/4)	800-2 1/2 687 (700-2 1/2)

HIRL all Rwys

MARYSVILLE, CALIFORNIA

39°08'N - 121°26'W

BEALE AFB (KBAB)

Amdt 6 25JAN24

HI-ILS or LOC Z RWY 33