

MARYSVILLE, CALIFORNIA

RNAV (GPS) RWY 33

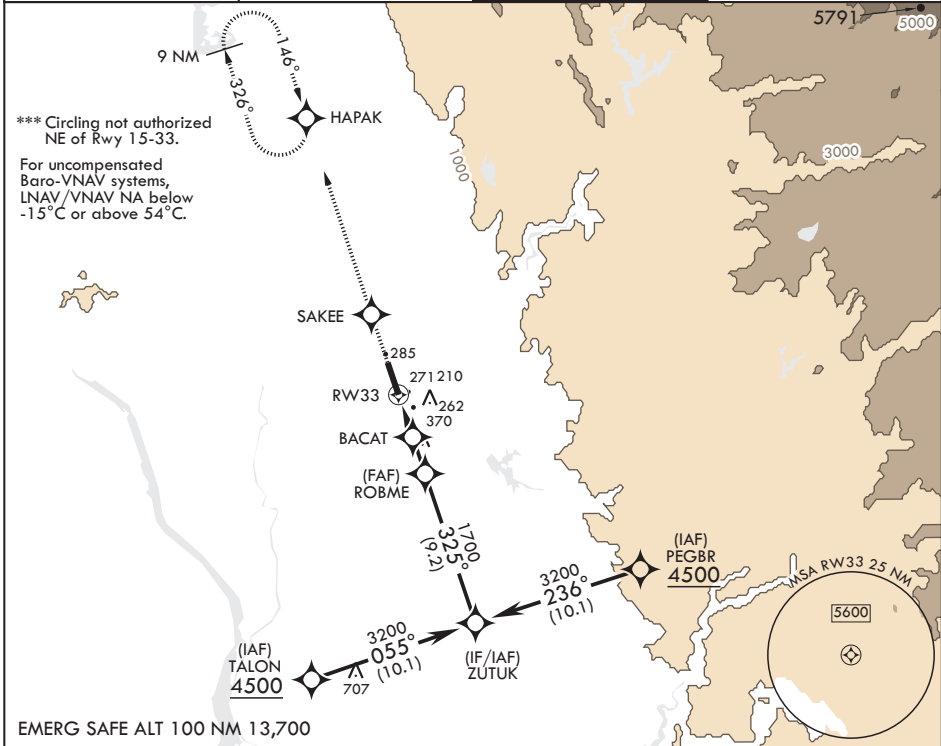
APCH CRS 325°	Rwy Idg THRE Arprt Elev 12,001 105 113
-------------------------	--

- (USAF)

BEALE AFB (KBAB)

RNP APCH	ALSIF-1	MISSED APPROACH: Climb to 3600 direct SAKEE, track 326° to HAPAK and hold.
<p>▼ * When ALS inop, increase vis to 1 1/4 miles. ** When ALS inop, increase CAT AB RVR to 55 and vis to 1 mile, CAT CDE vis to 1 1/4 miles.</p>		

ATIS★ 124.55 273.5	NORCAL APP CON 125.4 259.1	TOWER★ 119.4 284.75	GND CON 121.6 257.75
------------------------------	--------------------------------------	-------------------------------	--------------------------------



SW-2, 28 NOV 2024 to 26 DEC 2024

SW-2, 28 NOV 2024 to 26 DEC 2024

3600	SAKEE					ELEV 113	THRE 105
		ZUTUK	ROBME	BACAT	RW33		
		3200	1700	980	2.6 NM	2.3 NM	GP 3.00° TCH 50
CATEGORY	A	B	C	D	E		
LNAV/VNAV DA*	540/40		435	(500-¾)			
LNAV MDA**	540/24	435 (500-½)	540/40	435	(500-¾)		
CIRCLING***	600-1	487 (500-1)	600-1½ 487 (500-1½)	800-2¼ 687 (700-2¼)	800-2½ 687 (700-2½)	HIRL all Rwys	

MARYSVILLE, CALIFORNIA

39°08'N - 121°26'W

BEALE AFB (KBAB)

Amdt 2 22FEB24

RNAV (GPS) RWY 33