

APP CRS	Rwy Idg	6500
349°	TDZE	96
	Apt Elev	153

RNAV (RNP) Z RWY 35

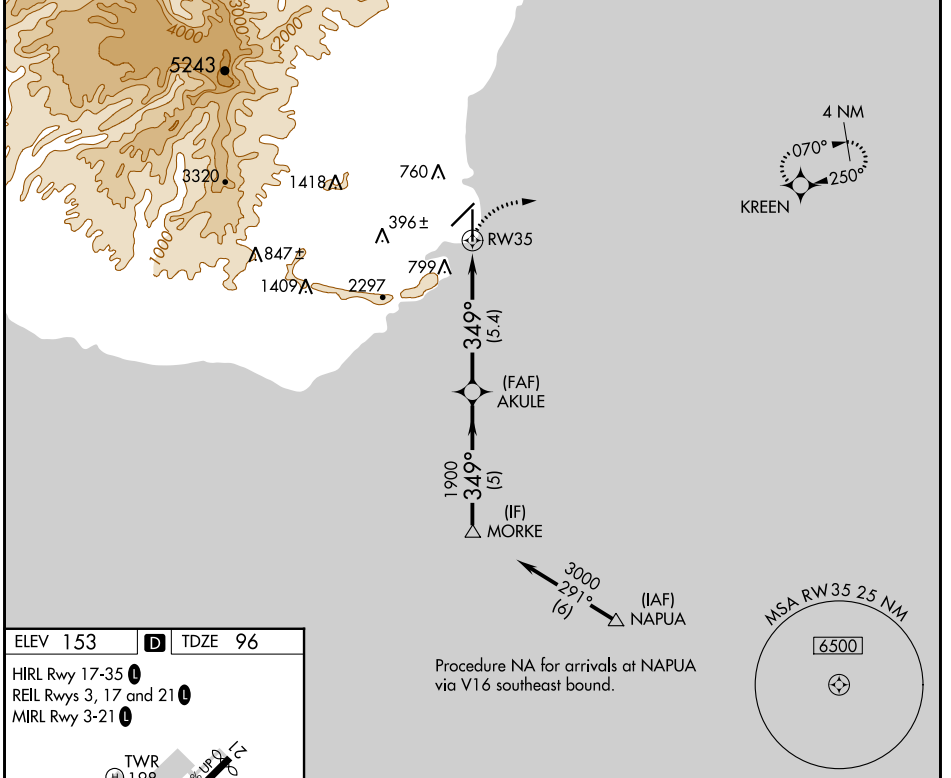
LIHUE (LIH)(PHLI)

V GPS required. For inoperative MALSR, increase RNP 0.30 visibility to 1¾. For uncompensated Baro-VNAV systems, procedure NA below 14°C (57°F) or above 48°C (119°F).

MALSR

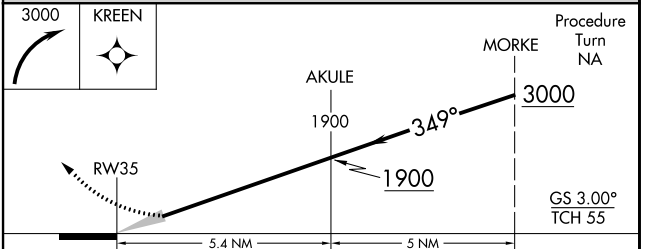
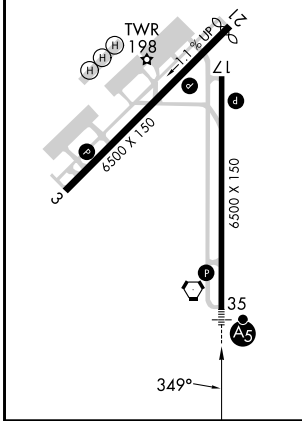
MISSED APPROACH: Climbing right turn to 3000 direct KREEN and hold.

ATIS 127.2	HCF CENTER 126.5 269.4	LIHUE TOWER* 118.9 (CTAF) 263.1	GND CON 121.9	CLNC DEL 126.5 269.4 (When twr closed)
----------------------	----------------------------------	--	-------------------------	---



ELEV 153	D	TDZE 96
----------	----------	---------

HIRL Rwy 17-35 **I**
 REIL Rwys 3, 17 and 21 **I**
 MIRL Rwy 3-21 **I**



CATEGORY	A	B	C	D
RNP 0.30 DA	599-1¼ 503 (500-1¼)			

AUTHORIZATION REQUIRED

PAC, 31 OCT 2024 to 26 DEC 2024

PAC, 31 OCT 2024 to 26 DEC 2024