

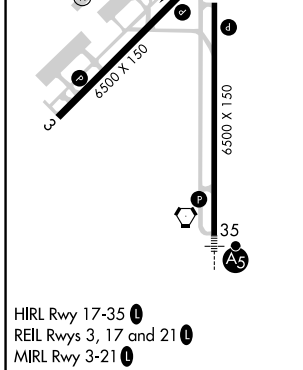
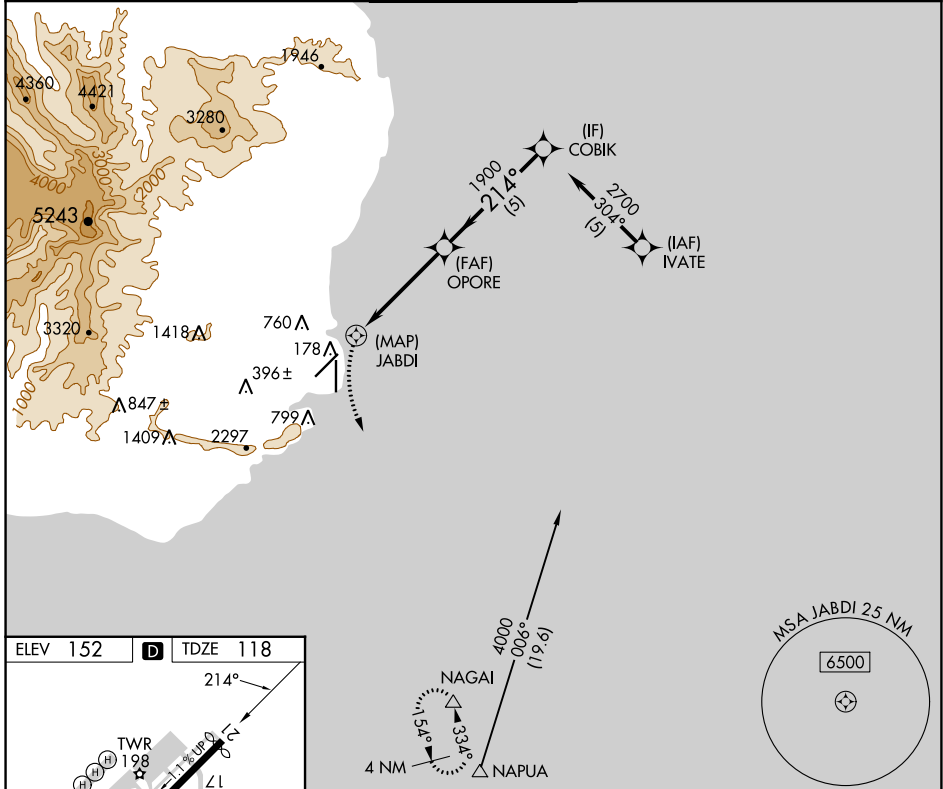
APP CRS	Rwy Idg	6295
214°	TDZE	118
	Apt Elev	152

RNAV (GPS) Y RWY 21

LHUE (LIH)(PHLI)

RNP APCH-GPS.	MISSED APPROACH: Climbing left turn to 3000 direct NAGAL and hold.
<p>▼ Circling NA at night. Circling NA west of Rwy 17-35.</p> <p>▲ Rwy 21 helicopter visibility reduction below 3/4 SM NA.</p>	

ATIS 127.2	HCF CENTER 126.5 269.4	LIHUE TOWER* 118.9(CTAF) 0 263.1	GND CON 121.9	CLNC DEL 126.5 269.4 (When twr closed)
----------------------	----------------------------------	---	-------------------------	---



3000	NAGAL	VGSI and descent angles not coincident (VGSI Angle 3.00/TCH 45).	COBIK
<p>1.5 NM to JABDI</p> <p>JABDI</p> <p>1900</p> <p>≤ 3.05° TCH 52</p>		<p>OPORE</p> <p>2700</p> <p>214°</p>	
1 NM		3 NM	
1.5 NM		5 NM	
CATEGORY	A	B	C
LNAV MDA	920-1¼	802 (800-1¼)	920-2½ 802 (800-2½)
C CIRCLING	920-1¼	768 (800-1¼)	920-2½ 768 (800-2½)