

HI-VOR or TACAN RWY 17R

VORTAC BFV 110.0 Chan 37	APCH CRS 177°	Rwy Idg 13,503 TDZE 1922 Arpt Elev 1922
--	-------------------------	--

AL-778 [USAF]

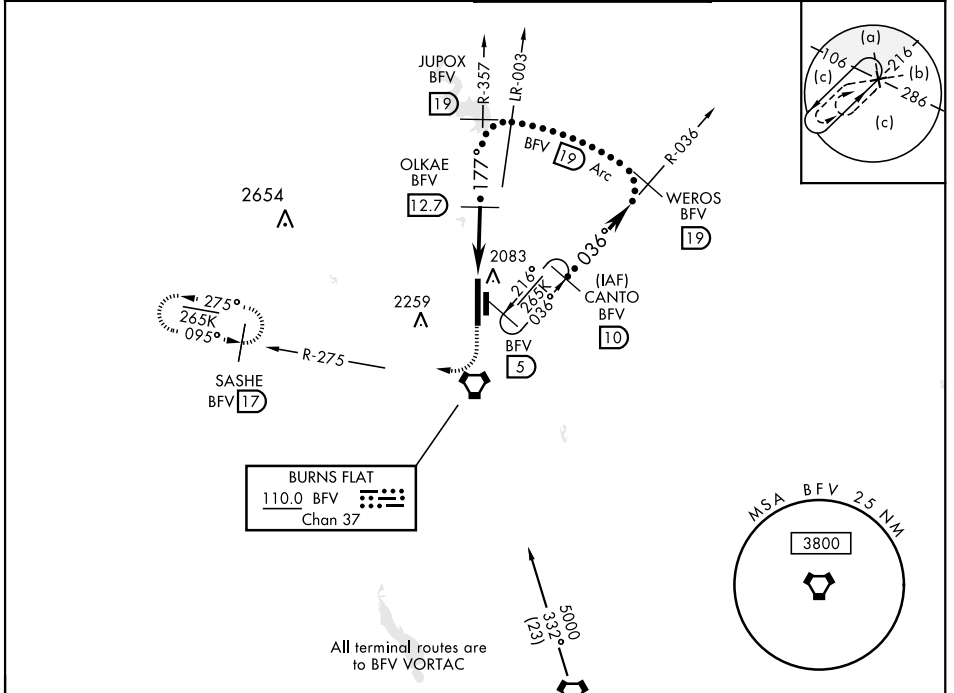
CLINTON-SHERMAN (KCSM)

DME required

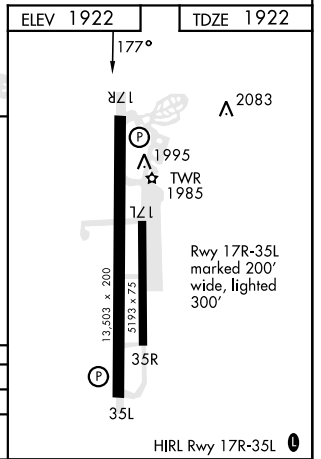
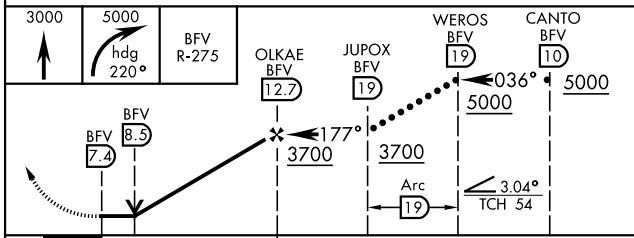
* Circling not authorized E of Rwy 17R-35L.

MISSED APPROACH: Climb to 3000 then climbing right turn to 5000 via heading 220° and BFV R-275 to SASHE/17 DME and hold.

ASOS 118.45	FORT WORTH CENTER 128.4 269.375	TOWER ★ 119.6 (CTAF) 0 256.9	GND CON 121.7 239.0
-----------------------	---	--	-------------------------------



EMERG SAFE ALT 100 NM 5000



CATEGORY	C	D	E
S-17R	2380-1½ 458 (500-1½)	2340-1¼ 418 (500-1¼)	2620-2½ 698 (700-2½)
CIRCLING*	2380-1½ 458 (500-1½)	2620-2¼ 698 (700-2¼)	2620-2½ 698 (700-2½)

BURNS FLAT, OKLAHOMA

35° 20' N - 99° 12' W

CLINTON-SHERMAN (KCSM)

Amdt 3 25FEB21

HI-VOR or TACAN RWY 17R

SC-1, 28 NOV 2024 to 26 DEC 2024

SC-1, 28 NOV 2024 to 26 DEC 2024