

WAAS CH 62815 W32A	APP CRS 325°	Rwy Idg 6602 TDZE 1099 Apr Elev 1099
--	------------------------	---

RNAV (GPS) RWY 32

ITHACA TOMPKINS INTL (ITH)

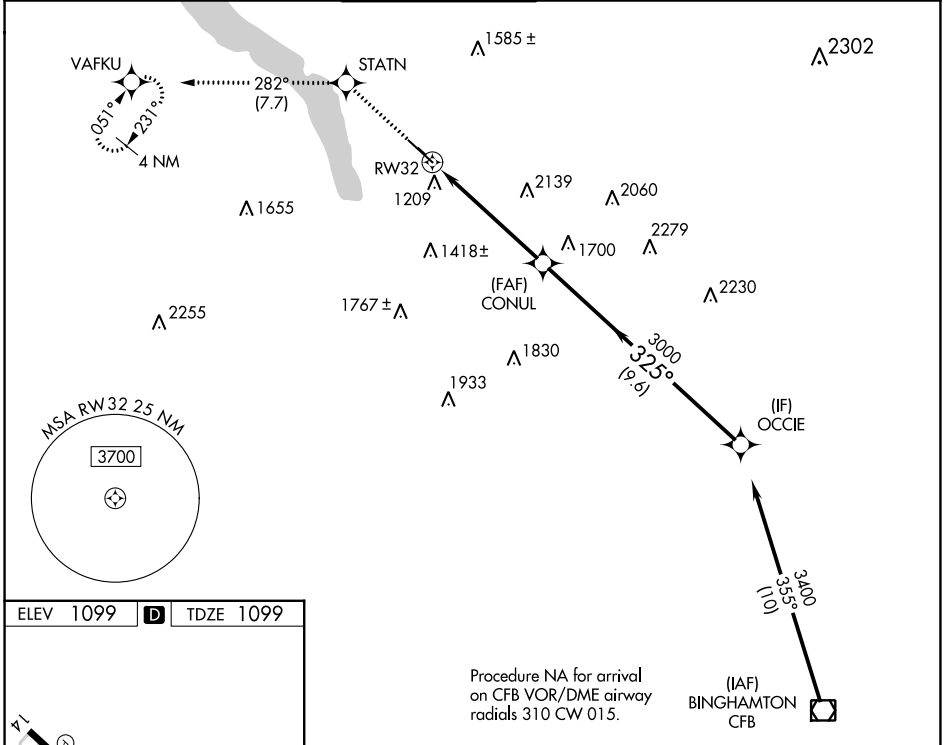
RNP APCH

⚠ Circling NA to Rwy's 15 and 33. Inop table does not apply to LNAV Cat A. Rwy 32 helicopter visibility reduction below 3/4 SM NA. When local altimeter setting not received, use Elmira altimeter setting and increase all DA 84 feet and all MDA 100 feet. For inop MALSR, increase LNAV Cat B visibility 1/4 mile. For inop MALSR, when using Elmira altimeter setting, increase LPV all Cats visibility to RVR 6000, and increase LNAV Cat B visibility to 1/2.



MISSED APPROACH:
Climb to 3700 direct STATN and on track 282° to VAFKU and hold.

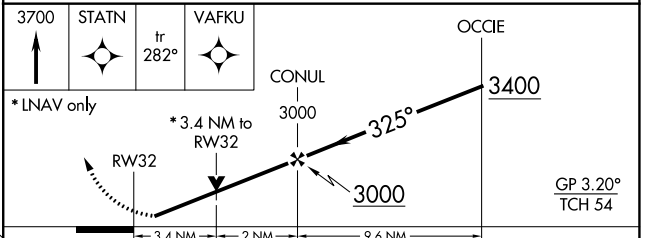
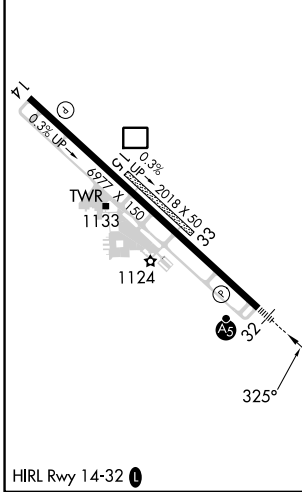
ATIS 125.175	ELMIRA APP CON ★ 124.3 257.8	ITHACA TOWER ★ 119.6 (CTAF) 0	GND CON 121.8	CLNC DEL 121.8	UNICOM 122.95
------------------------	--	---	-------------------------	--------------------------	-------------------------



NE-2, 28 NOV 2024 to 26 DEC 2024

NE-2, 28 NOV 2024 to 26 DEC 2024

ELEV 1099	D	TDZE 1099
-----------	----------	-----------



CATEGORY	A	B	C	D
LPV DA	1385/40		286 (300-3/4)	
LNAV MDA	2300/60 1201 (1300-1 1/4)		2300-2 1/2 1201 (1300-2 1/2)	
C CIRCLING	2300-1 1/4 1201 (1300-1 1/4)		2300-3 1201 (1300-3) 2440-3 1341 (1400-3)	