

LOC/DME I-PVL 110.75 Chan 44 (Y)	APP CRS 011°	Rwy Idg TDZE 9500 1017 Apt Elev 1027
---	------------------------	--

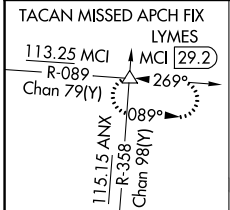
ILS RWY 1R (SA CAT I)

KANSAS CITY INTL (MCI)

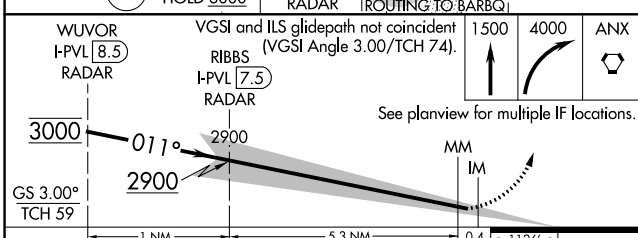
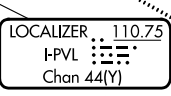
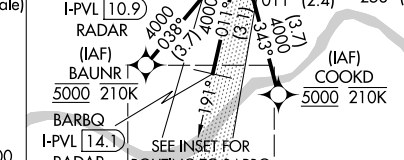
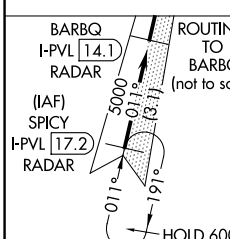
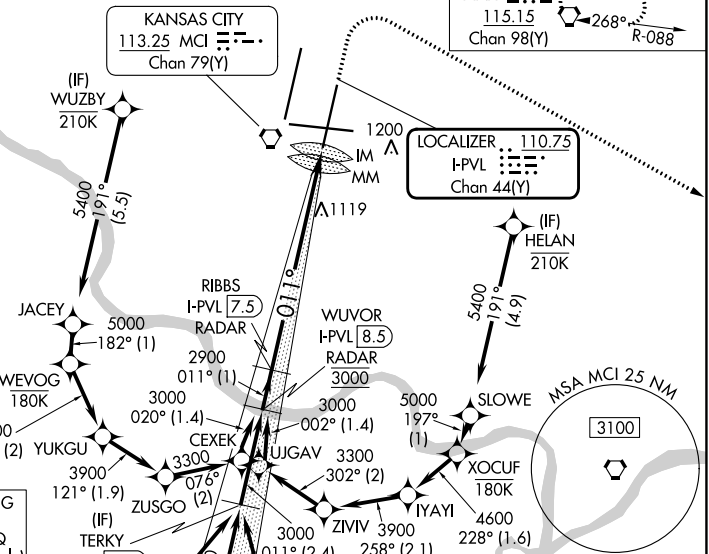
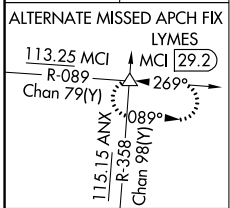
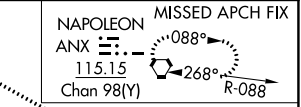
RNP APCH - GPS. From BAUNR or COOKD or WUZBY or HELAN.
 DME or RADAR required. RADAR required for procedure entry at SPICY.
 Requires specific OPSPEC, MSPEC, or LOA approval. Simultaneous approach authorized except from BAUNR, COOKD, WUZBY, and HELAN.

ALSF-2
 MISSED APPROACH: Climb to 1500 then climbing right turn to 4000 direct ANX VORTAC and hold. (TACAN aircraft) Climb to 1500 then climbing right turn to 4000 on heading 130° and MCI R-089 to LYMES INT/ MCI 29.2 DME and hold.

D-ATIS 128.375	KANSAS CITY APP CON 120.95 318.1	INTERNATIONAL TOWER 128.2 254.25	GND CON 121.8	CLNC DEL 135.7	CPDLC
--------------------------	--	--	-------------------------	--------------------------	-------

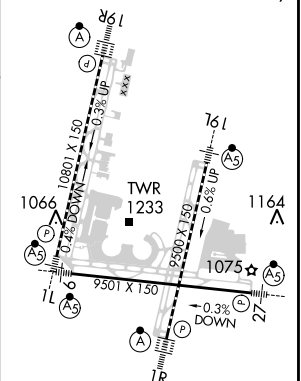


From BAUNR, COOKD, WUZBY, and HELAN transitions NA for Cat E.



ELEV 1027	TDZE 1017
-----------	-----------

TDZ/CL Rwy's 1L, 1R, 19L and 19R
HIRL all Rwy's



CATEGORY	A	B	C	D	E
S-ILS 1R	RA 161/14 150 DA 1167				

SA CATEGORY I ILS - SPECIAL AIRCREW & AIRCRAFT CERTIFICATION REQUIRED

NC-3, 28 NOV 2024 to 26 DEC 2024

NC-3, 28 NOV 2024 to 26 DEC 2024