

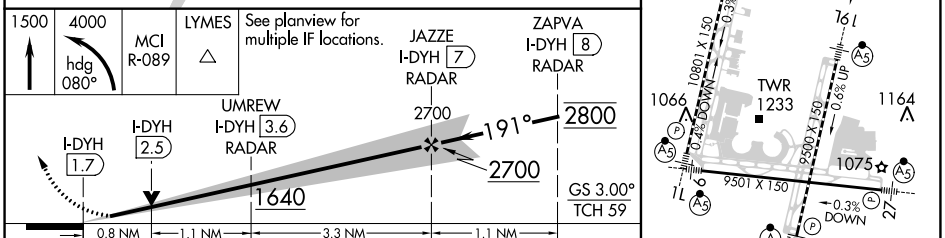
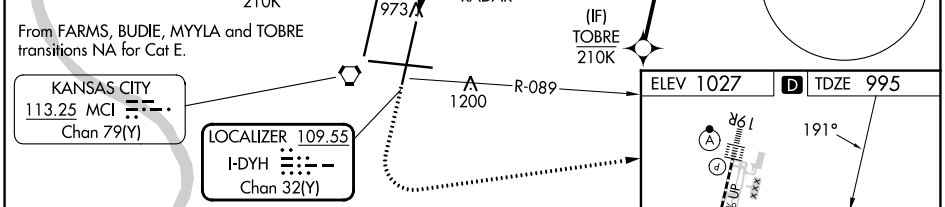
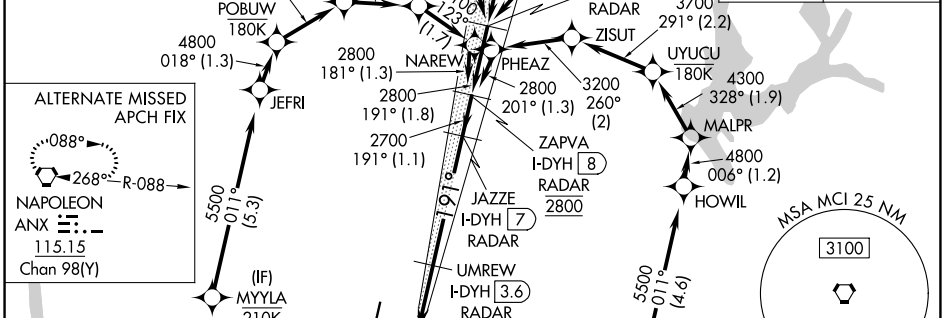
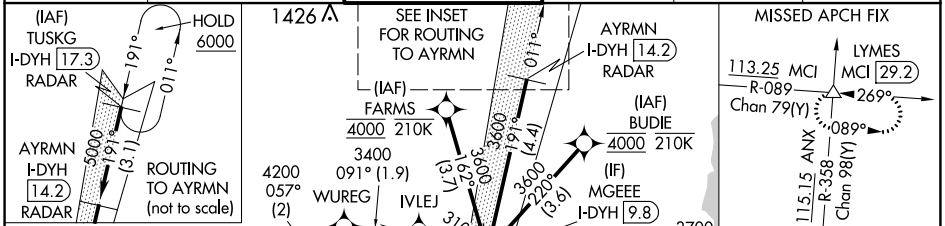
| | | |
|---|------------------------|--|
| LOC/DME I-DYH 109.55 Chan 32 (Y) | APP CRS 191° | Rwy Idg 9500 TDZE 995 Apt Elev 1027 |
|---|------------------------|--|

ILS or LOC RWY 19L

KANSAS CITY INTL (MCI)

| | | |
|--|-------|--|
| RNP APCH - GPS. From FARMS or BUDIE or MYLLA or TOBRE. | MALSR | MISSED APPROACH: Climb to 1500 then climbing left turn to 4000 on heading 080° and MCI VORTAC R-089 to LYMES INT/ MCI 29.2 DME and hold. |
| DME or RADAR required. RADAR required for procedure entry at TUSKG. | | |
| For inop ALS, increase S-ILS 19L Cat E visibility to RVR 4000 and S-LOC 19L Cat C/D/E visibility to RVR 4500. Simultaneous approach authorized except from BUDIE, FARMS, TOBRE, and MYLLA. | | |

| | | | | | |
|--------------------------|--|--|-------------------------|--------------------------|-------|
| D-ATIS 128.375 | KANSAS CITY APP CON 120.95 318.1 | INTERNATIONAL TOWER 128.2 254.25 | GND CON 121.8 | CLNC DEL 135.7 | CPDLC |
|--------------------------|--|--|-------------------------|--------------------------|-------|



| | | | | | | |
|----------------------------------|-----------|-------------|-------------------------|---|---------------|---------------|
| ELEV 1027 | TDZE 995 | | | | | |
| 1500 | 4000 | MCI R-089 | LYMES | See planview for multiple IF locations. | JAZZE I-DYH 7 | ZAPVA I-DYH 8 |
| hdg 080° | | | | | | |
| UMREW I-DYH 3.6 | 2700 | 191° | 2800 | | | |
| I-DYH 1.7 | I-DYH 2.5 | | | | | |
| 0.8 NM | 1.1 NM | 3.3 NM | 1.1 NM | | | |
| GS 3.00° | TCH 59 | | | | | |
| CATEGORY | A | B | C | D | E | |
| S-ILS 19L | | 1195/18 | 200 (200-½) | | | |
| S-LOC 19L | | 1280/24 | 285 (300-½) | | | |
| CIRCLING | 1540-1 | 513 (600-1) | 1540-1½ 513 (600-1½) | 1580-2 | 553 (600-2) | |
| HIRL all Rwy's | | | | | | |
| TDZ/CL Rwy's 1L, 1R, 19L and 19R | | | | | | |
| FAF to MAP 5.2 NM | | | | | | |
| Knots | 60 | 90 | 120 | 150 | 180 | |
| Min:Sec | 5:12 | 3:28 | 2:36 | 2:05 | 1:44 | |

NC-3, 28 NOV 2024 to 26 DEC 2024

NC-3, 28 NOV 2024 to 26 DEC 2024