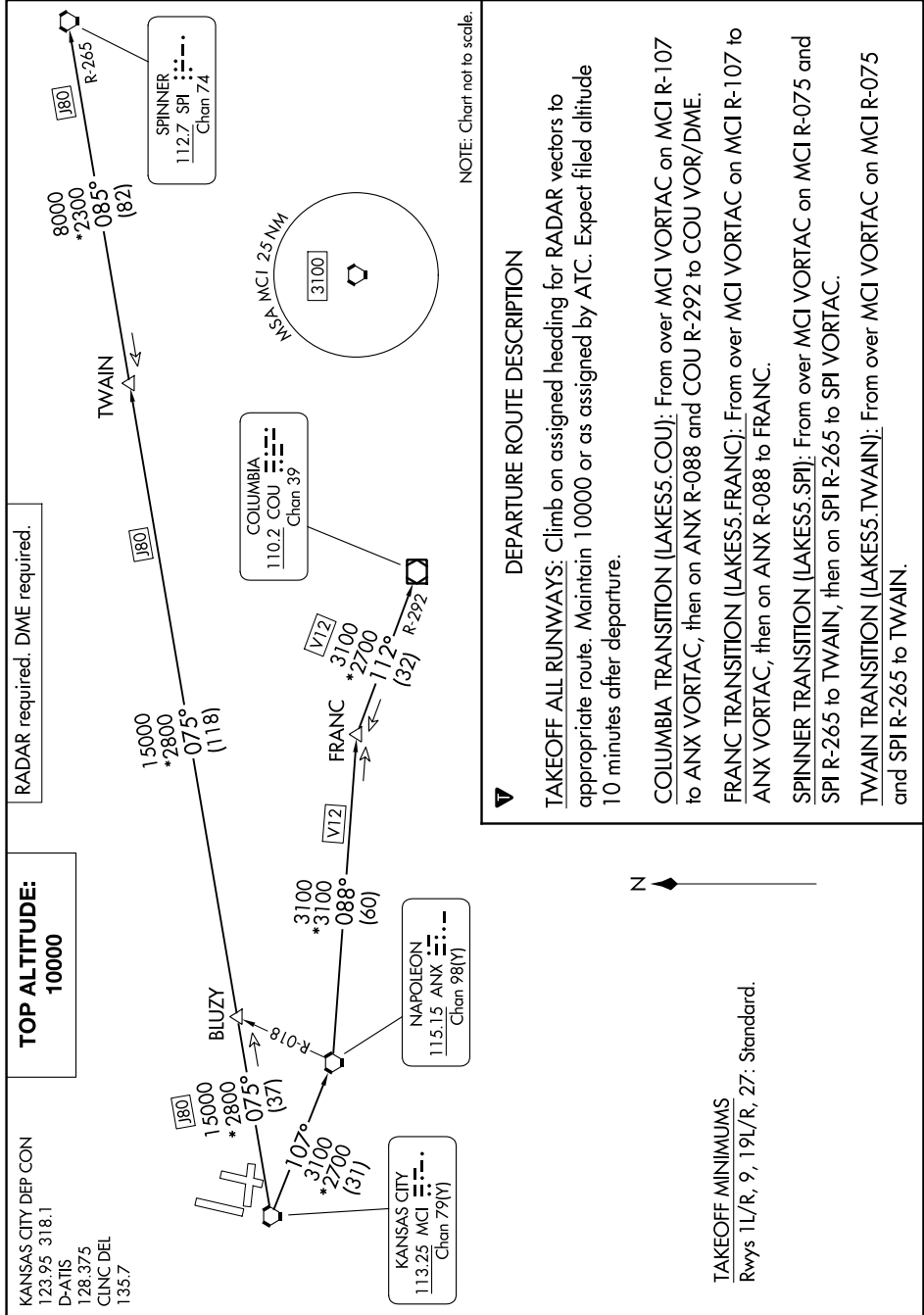


# LAKES FIVE DEPARTURE

AL-780 (FAA)

KANSAS CITY INTL (MCI)  
KANSAS CITY, MISSOURI

NC-3, 28 NOV 2024 to 26 DEC 2024



NOTE: Chart not to scale.

## DEPARTURE ROUTE DESCRIPTION

**TAKEOFF ALL RUNWAYS:** Climb on assigned heading for RADAR vectors to appropriate route. Maintain 10000 or as assigned by ATC. Expect filed altitude 10 minutes after departure.

**COLUMBIA TRANSITION [LAKES5.COU]:** From over MCI VORTAC on MCI R-107 to ANX VORTAC, then on ANX R-088 and COU R-292 to COU VOR/DME.

**FRANC TRANSITION [LAKES5.FRANC]:** From over MCI VORTAC on MCI R-107 to ANX VORTAC, then on ANX R-088 to FRANC.

**SPINNER TRANSITION [LAKES5.SPI]:** From over MCI VORTAC on MCI R-075 and SPI R-265 to TWAIN, then on SPI R-265 to SPI VORTAC.

**TWAIN TRANSITION [LAKES5.TWAIN]:** From over MCI VORTAC on MCI R-075 and SPI R-265 to TWAIN.

**TAKEOFF MINIMUMS**  
Rwys 1L/R, 9, 19L/R, 27: Standard.

NC-3, 28 NOV 2024 to 26 DEC 2024