

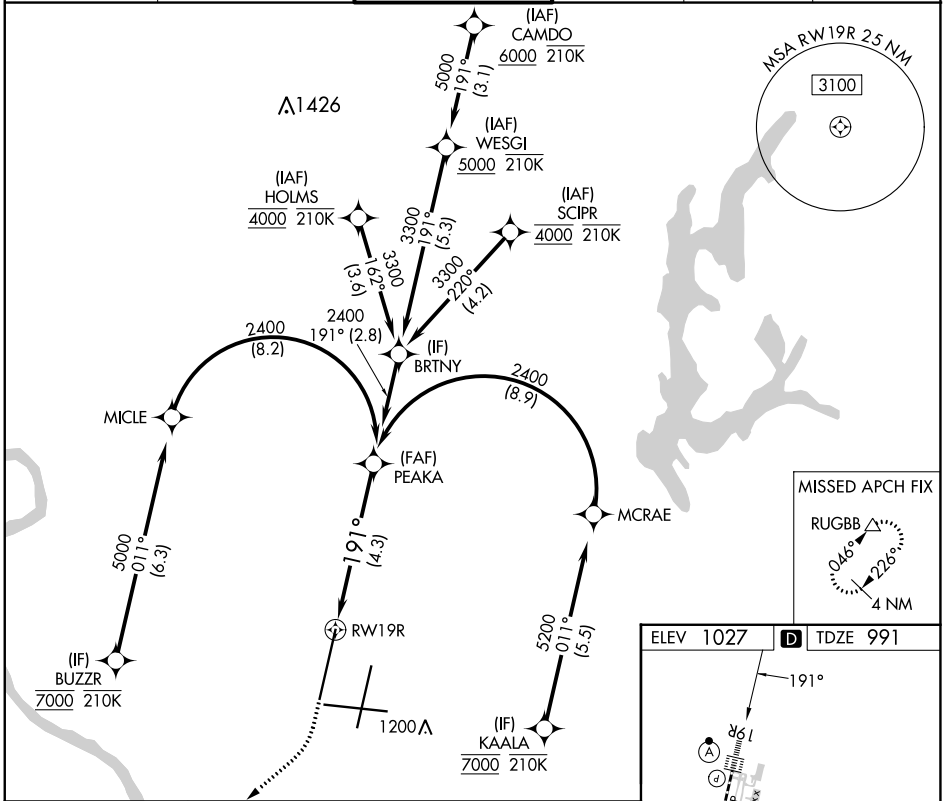
APP CRS <b>191°</b>	Rwy Idg TDZE Apt Elev	<b>10801</b> <b>991</b> <b>1027</b>
------------------------	-----------------------------	---

# RNAV (RNP) Z RWY 19R

KANSAS CITY INTL (MCI)

RADAR required for procedure entry. RNP AR APCH - GPS.		ALSF-2 	MISSED APPROACH: Climb to 2000 then climbing right turn to 4000 direct RUGBB and hold.
▼ For uncompensated Baro-VNAV systems, procedure NA below -21°C or above 54°C. Simultaneous approach authorized, except for arrivals at BUZZR, HOLMS, SCIPR, and KAALA. For inop ALS, increase RNP 0.15 all Cats visibility to RVR 4500 and RNP 0.30 all Cats visibility RVR 6000.			

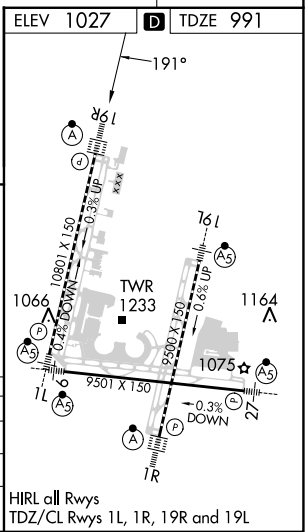
D-ATIS <b>128.375</b>	KANSAS CITY APP CON <b>120.95 318.1</b>	INTERNATIONAL TOWER <b>128.2 254.25</b>	GND CON <b>121.8</b>	CLNC DEL <b>135.7</b>	CPDLC
--------------------------	--	--	-------------------------	--------------------------	-------



NC-3, 28 NOV 2024 to 26 DEC 2024

NC-3, 28 NOV 2024 to 26 DEC 2024

2000	4000	RUGBB	See planview for multiple IF locations. VGSI and RNAV glidepath not coincident (VGSI Angle 3.00/TCH 80).	PEAKA 2400
RWY 19R		GP 3.00° TCH 55		
4.3 NM				
CATEGORY	A	B	C	D
RNP 0.15 DA		1287/24	296 (300-1/2)	
RNP 0.30 DA		1405/40	414 (400-3/4)	
<b>AUTHORIZATION REQUIRED</b>				



HIRL all Rws  
TDZ/CL Rws 1L, 1R, 19R and 19L