


APP CRS	Rwy Idg	9500
011°	TDZE	1017
	Apt Elev	1027

RNAV (RNP) Z RWY 1R

KANSAS CITY INTL (MCI)

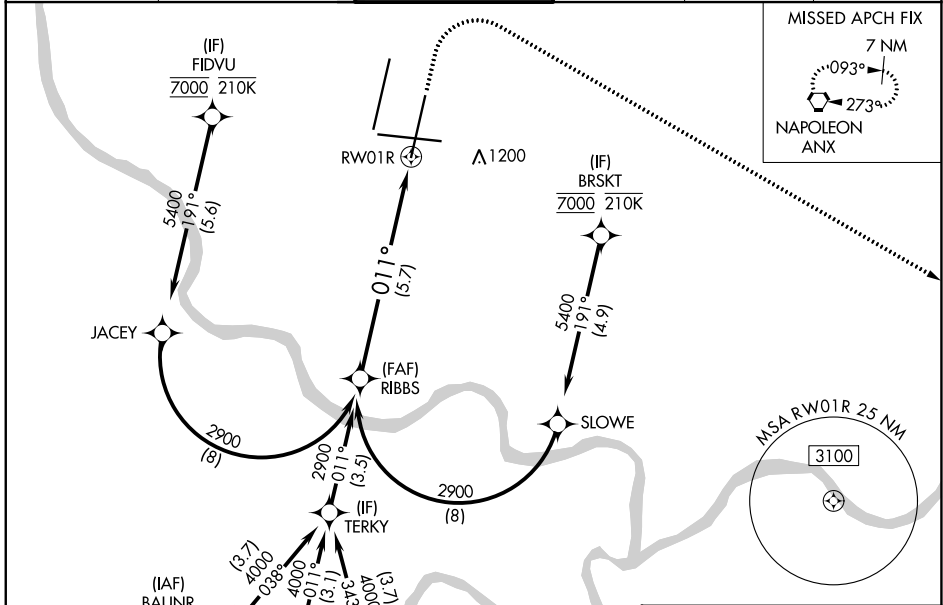
RNP AR APCH - GPS.

▼ Use of FD or AP required during simultaneous operations. For uncompensated Baro-VNAV systems, procedure NA below -19°C or above 54°C. Simultaneous approach authorized, except for arrivals at FIDVU, BRSKT, BAUNR and COOKD. For inop ALS, increase RNP 0.30 all Cats visibility to RVR 4500.

ALSF-2 

MISSED APPROACH: Climb to 1500 then climbing right turn to 4000 direct ANX VORTAC and hold.

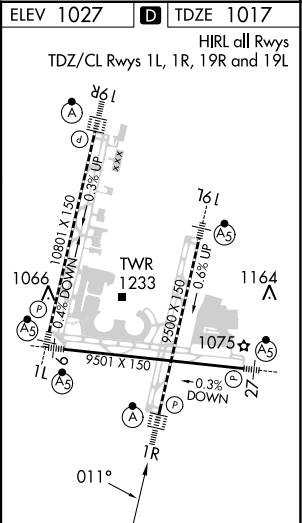
D-ATIS 128.375	KANSAS CITY APP CON 120.95 318.1	INTERNATIONAL TOWER 128.2 254.25	GND CON 121.8	CLNC DEL 135.7	CPDLC
--------------------------	--------------------------------------------	--------------------------------------------	-------------------------	--------------------------	-------



NC-3, 28 NOV 2024 to 26 DEC 2024

NC-3, 28 NOV 2024 to 26 DEC 2024

ELEV 1027	D TDZE 1017
HIRL all Rwys	
TDZ/CL Rwys 1L, 1R, 19R and 19L	



RIBBS	VGS1 and RNAV glidepath not coincident (VGS1 Angle 3.00/TCH 74).		
2900	1500	4000	ANX
GP 3.00° TCH 59			
See planview for multiple IF locations.			
5.7 NM			
011°			
CATEGORY	A	B	C
RNP 0.30 DA		1280/24	263 (300-1/2)
AUTHORIZATION REQUIRED			