

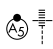
RNAV (RNP) Z RWY 9

KANSAS CITY INTL (MCI)

APP CRS	Rwy Idg	9501
094°	TDZE	1016
	Apt Elev	1027

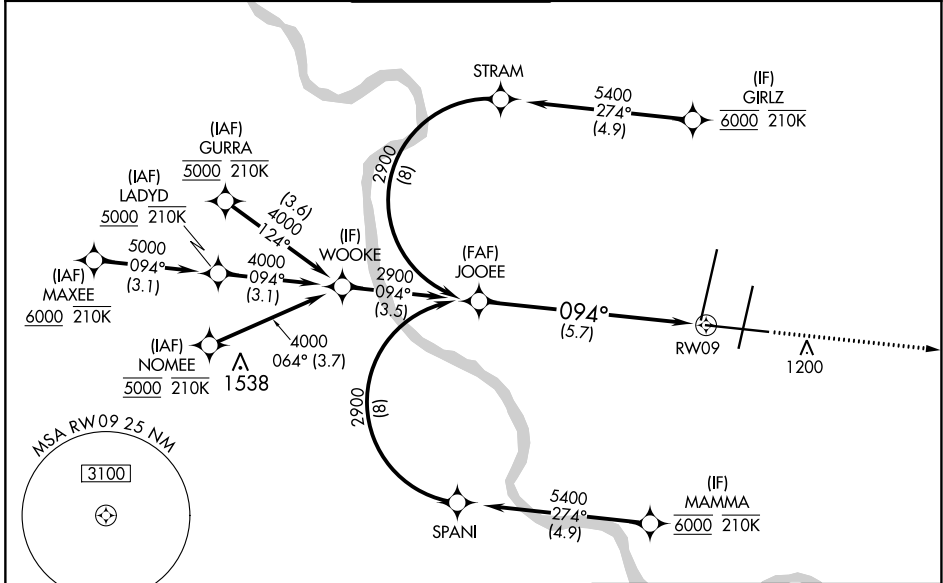
RNP AR APCH - GPS.

▼ For uncompensated Baro-VNAV systems, procedure NA below -19°C or above 54°C. For inop ALS, increase RNP 0.20 all Cats visibility to RVR 4500; increase RNP 0.30 all Cats visibility to RVR 6000.

MALSR 

MISSED APPROACH: Climb to 4000 direct DUSTN and on track 092° LYMES and hold.

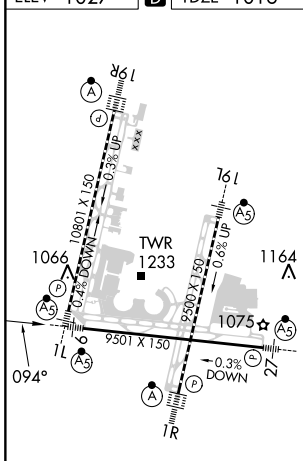
D-ATIS 128.375	KANSAS CITY APP CON 120.95 318.1	INTERNATIONAL TOWER 128.2 254.25	GND CON 121.8	CLNC DEL 135.7	CPDLC
--------------------------	--	--	-------------------------	--------------------------	-------



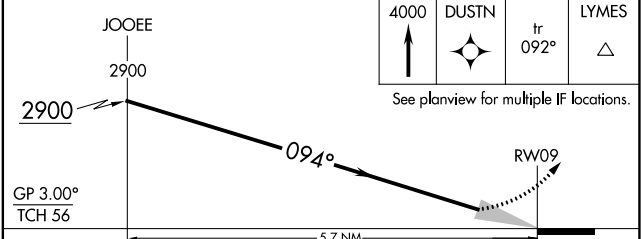
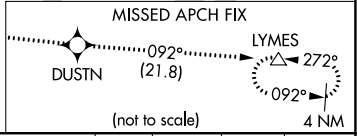
NC-3, 28 NOV 2024 to 26 DEC 2024

NC-3, 28 NOV 2024 to 26 DEC 2024

ELEV 1027	D	TDZE 1016
-----------	----------	-----------



HIRL all Rwys
TDZ/CL Rwys 1L, 1R, 19R and 19L



GP 3.00°	TCH 56			
CATEGORY	A	B	C	D
RNP 0.20 DA	1319/24		303 (300-½)	
RNP 0.30 DA	1418/40		402 (400-¾)	

AUTHORIZATION REQUIRED