

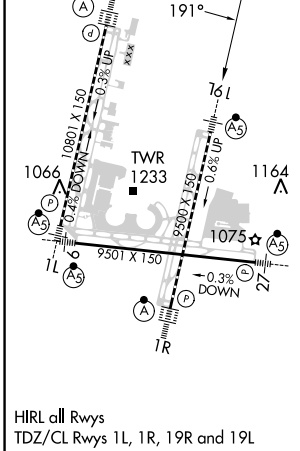
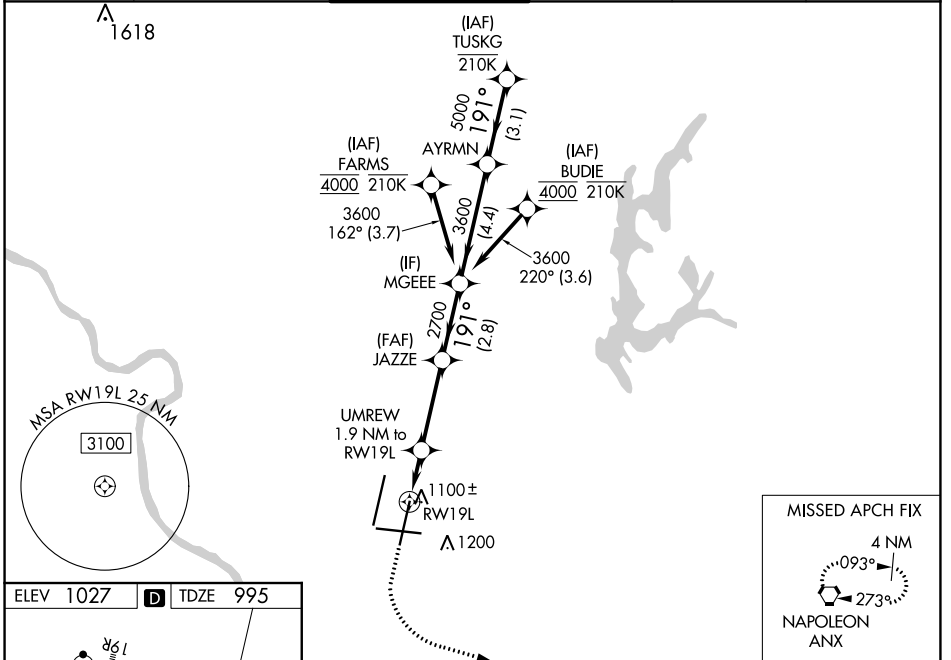
| | | |
|--|------------------------|--|
| WAAS CH 82108 W19A | APP CRS 191° | Rwy Idg TDZE 995 Apt Elev 1027 |
|--|------------------------|--|

RNAV (GPS) Y RWY 19L

KANSAS CITY INTL (MCI)

| | | | | |
|--|--|-------|--|--|
| RNP APCH - GPS. | | MALSR | MISSED APPROACH: Climb to 1500 then climbing left turn to 4000 direct ANX VORTAC and hold. | |
| <p>▼ Use of FD or AP required during simultaneous operations. LNAV procedure NA during simultaneous operations. For uncompensated Baro-VNAV systems, LNAV/VNAV NA below -21°C or above 54°C. For inop ALS, increase LNAV/VNAV all Cats and LNAV Cats C/D visibility to RVR 5500. Simultaneous approach authorized except from BUDIE and FARMS.</p> | | | | |

| | | | | | |
|--------------------------|--|--|-------------------------|--------------------------|-------|
| D-ATIS 128.375 | KANSAS CITY APP CON 120.95 318.1 | INTERNATIONAL TOWER 128.2 254.25 | GND CON 121.8 | CLNC DEL 135.7 | CPDLC |
|--------------------------|--|--|-------------------------|--------------------------|-------|



| ELEV 1027 | D | TDZE 995 | | | |
|-----------------------|------------|-------------|-------------------------|-----------------------|--------|
| 1500 | 4000 | ANX | | | |
| UMREW 1.9 NM to RW19L | JAZZE 2700 | MGEEE 3600 | AYRNM 3600 | TUSKG 6000 | |
| 1 NM | 0.9 NM | 3.3 NM | 2.8 NM | 4.4 NM | 3.1 NM |
| CATEGORY | A | B | C | D | |
| LPV DA | | 1195/18 | 200 (200-½) | | |
| LNAV/VNAV DA | | 1365/35 | 370 (400-⅝) | | |
| LNAV MDA | 1360/24 | 365 (400-½) | 1360/35 | 365 (400-⅝) | |
| CIRCLING | 1540-1 | 513 (600-1) | 1540-1½ 513 (600-1½) | 1580-2 553 (600-2) | |