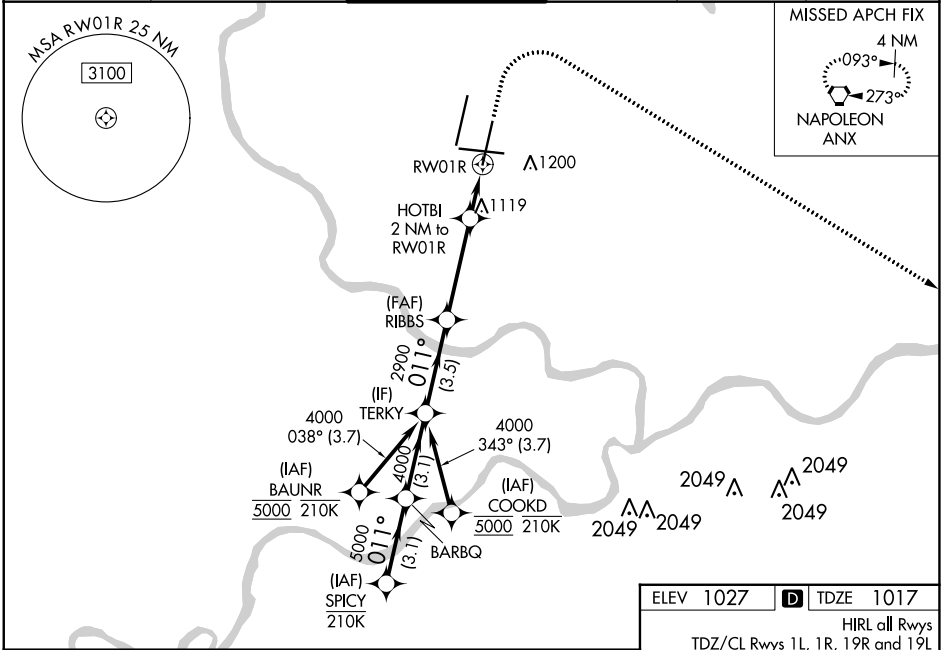


WAAS CH 58208 W01A	APP CRS 011°	Rwy Idg 9500 TDZE 1017 Apt Elev 1027
---------------------------------	------------------------	---

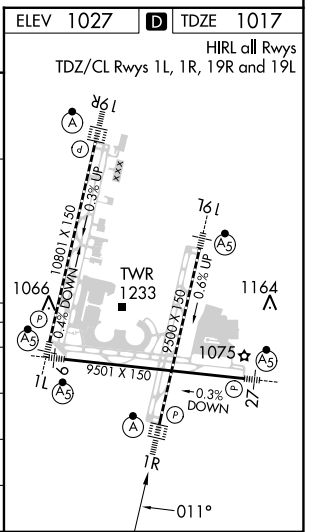
RNAV (GPS) Y RWY 1R

KANSAS CITY INTL (MCI)

RNP APCH - GPS.		ALSF-2 	MISSED APPROACH: Climb to 1500 then climbing right turn to 4000 direct ANX VORTAC and hold.				
<p>⚠ LNAV procedure NA during simultaneous operations. Use of FD or AP required during simultaneous operations. For uncompensated Baro-VNAV systems, LNAV/VNAV NA below -19°C or above 54°C. Simultaneous approach authorized except from BAUNR or COOKD. For inop ALS, increase LNAV/VNAV all Cats visibility to RVR 4500 and LNAV Cats C/D visibility to RVR 5500.</p>			D-ATIS 128.375	KANSAS CITY APP CON 120.95 318.1	INTERNATIONAL TOWER 128.2 254.25	GND CON 121.8	CLNC DEL 135.7



SPICY	BARBQ	TERKY	RIBBS	HOTBI 2 NM to RW01R	1500	4000	ANX
6000	5000	4000	2900	1700	↑	↘	
VGSI and RNAV glidepath not coincident (VGSI Angle 3.00/TCH 74).							
GP 3.00° TCH 59	011°		011°		011°		
	3.1 NM	3.1 NM	3.5 NM	3.7 NM	1.1 NM	0.9 NM	
CATEGORY	A		B		C		D
LPV DA	1217/18		200 (200-½)				
LNAV/VNAV DA	1311/24		294 (300-½)				
LNAV MDA	1380/24 363 (400-½)		1380/35 363 (400-¾)				
C CIRCLING	1540-1 513 (600-1)		1540-1½ 513 (600-1½)		1580-2 553 (600-2)		



NC-3, 28 NOV 2024 to 26 DEC 2024

NC-3, 28 NOV 2024 to 26 DEC 2024