

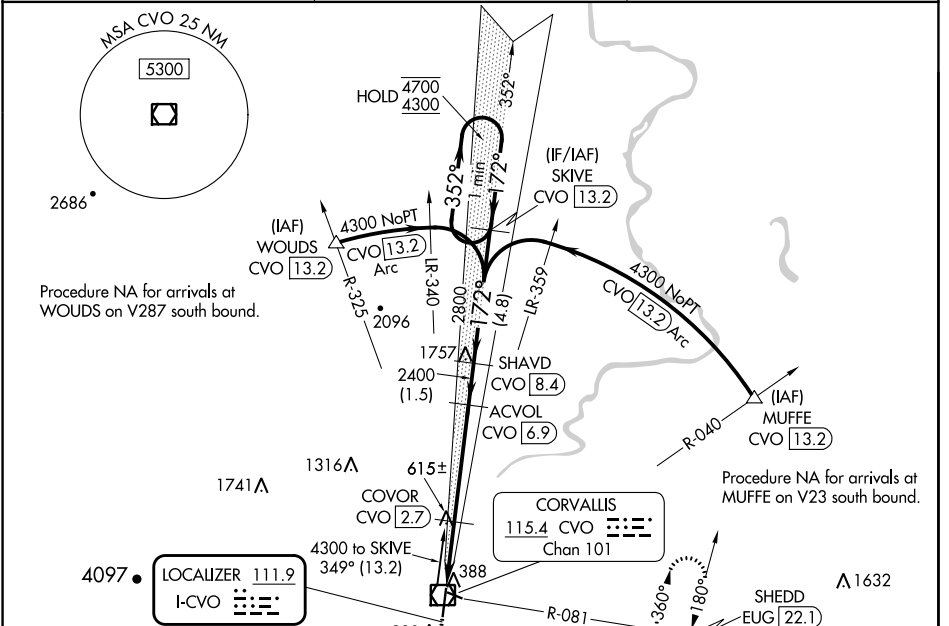
LOC I-CVO <b>111.9</b>	APP CRS <b>172°</b>	Rwy Idg <b>5900</b>
		TDZE <b>248</b>
		Apt Elev <b>250</b>

# ILS or LOC RWY 17

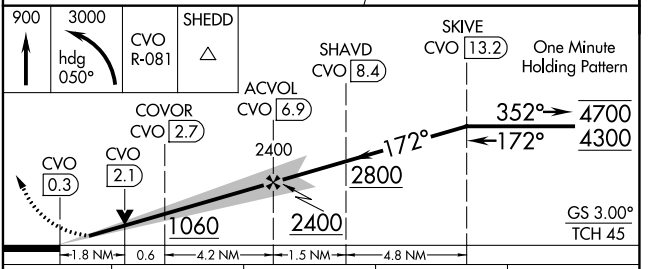
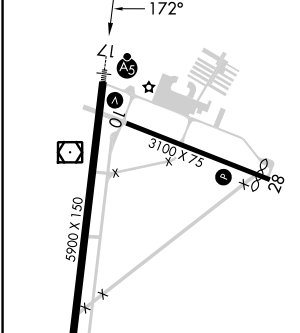
CORVALLIS MUNI (CVO)

DME required.	MALSR	MISSED APPROACH: Climb to 900 then climbing left turn to 3000 on heading 050° and on CVO VOR/DME R-081 to SHEDD INT/EUG 22.1 DME and hold, continue climb-in-hold to 3000.
<p>⚠ Circling Rwy 28 NA at night. For inop ALS, increase S-LOC 17 Cat C/D visibility to 1¼ SM. DME from CVO VOR/DME.</p> <p>⚠ DME use requires simultaneous reception of I-CVO and CVO DME.</p>		

AWOS-3PT <b>135.775</b>	CASCADE APP CON ★ <b>127.5 348.7</b>	UNICOM <b>123.075 (CTAF) ①</b>
----------------------------	---	-----------------------------------



ELEV 250	D TDZE 248
----------	------------



REIL Rwy 35	①
HIRL 17-35	①
MIRL Rwys 10-28	①
FAF to MAP 6.6 NM	
Knots	60 90 120 150 180
Min:Sec	6:36 4:24 3:18 2:38 2:14
CATEGORY	A B C D
S-ILS 17	448-½ 200 (200-½)
S-LOC 17	880-½ 632 (700-½) 880-1⅓ 632 (700-1⅓)
CIRCLING	880-1 630 (700-1) 920-1¾ 670 (700-1¾) 1060-2½ 810 (900-2½)

NW-1, 28 NOV 2024 to 26 DEC 2024

NW-1, 28 NOV 2024 to 26 DEC 2024