

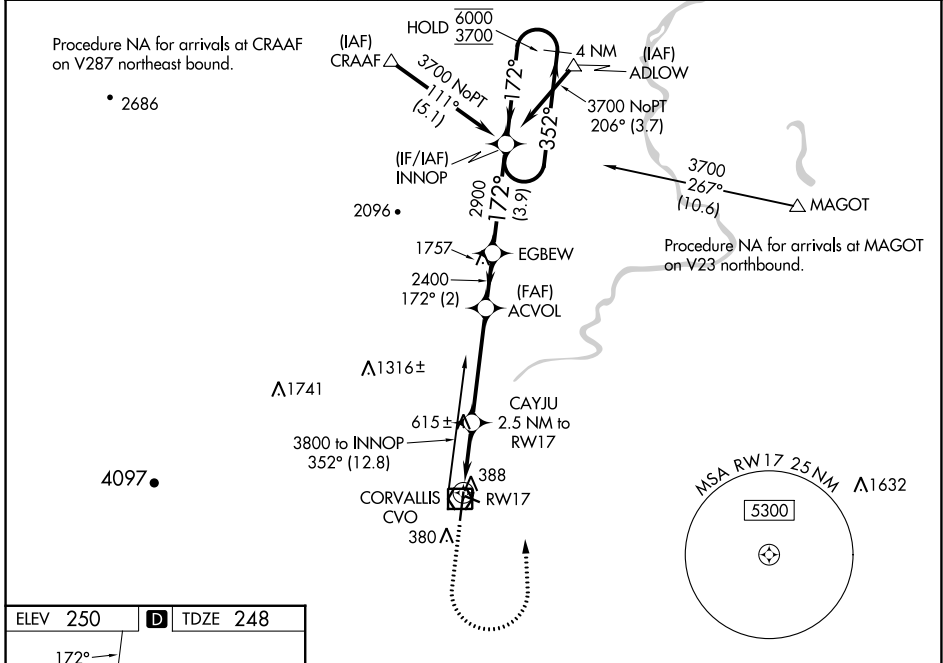
WAAS CH <b>78311</b> <b>W17A</b>	APP CRS <b>172°</b>	Rwy Idg TDZE <b>248</b> Apt Elev <b>250</b>
--	------------------------	---

# RNAV (GPS) RWY 17

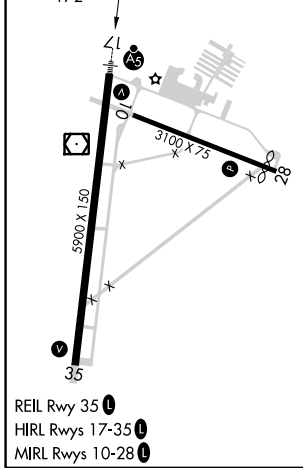
CORVALLIS MUNI (CVO)

RNP APCH - GPS.	MALSR 	MISSED APPROACH: Climb to 1100 then climbing left turn to 3700 direct INNOP and hold, continue climb-in-hold to 3700.
Circling Rwy 28 NA at night. For uncompensated Baro-VNAV systems, LNAV/VNAV NA below -15°C or above 54°C. When local altimeter setting not received, procedure NA. For inop ALS, increase LNAV Cat C/D visibility to 1/4 SM.		

AWOS-3PT <b>135.775</b>	CASCADE APP CON * <b>127.5 348.7</b>	UNICOM <b>123.075 (CTAF)</b>
----------------------------	---	---------------------------------



ELEV 250	<b>D</b>	TDZE 248
----------	----------	----------



1100	3700	INNOP	INNOP		4 NM Holding Pattern
↑	↶	☀	ACVOL	EGBEW	INNOP
			CAYJU 2.5 NM to RW17	2400	352° → 6000
			1.8 NM to RW17	2900	← 172° 3700
			1080	2400	GP 3.00° TCH 45
			1.8 NM	0.7	4.1 NM
			2 NM	3.9 NM	
CATEGORY	A	B	C	D	
LPV DA	448-1/2		200 (200-1/2)		
LNAV/VNAV DA	571-1/2		323 (400-1/2)		
LNAV MDA	880-1/2 632 (700-1/2)		880-1 3/8 632 (700-1 3/8)		
CIRCLING	880-1 630 (700-1)		920-1 3/4 1080-2 3/4 670 (700-1 3/4) 830 (900-2 3/4)		

NW-1, 28 NOV 2024 to 26 DEC 2024

NW-1, 28 NOV 2024 to 26 DEC 2024