

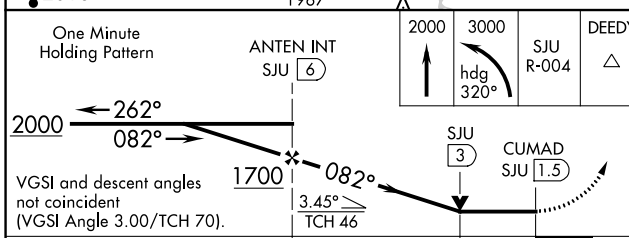
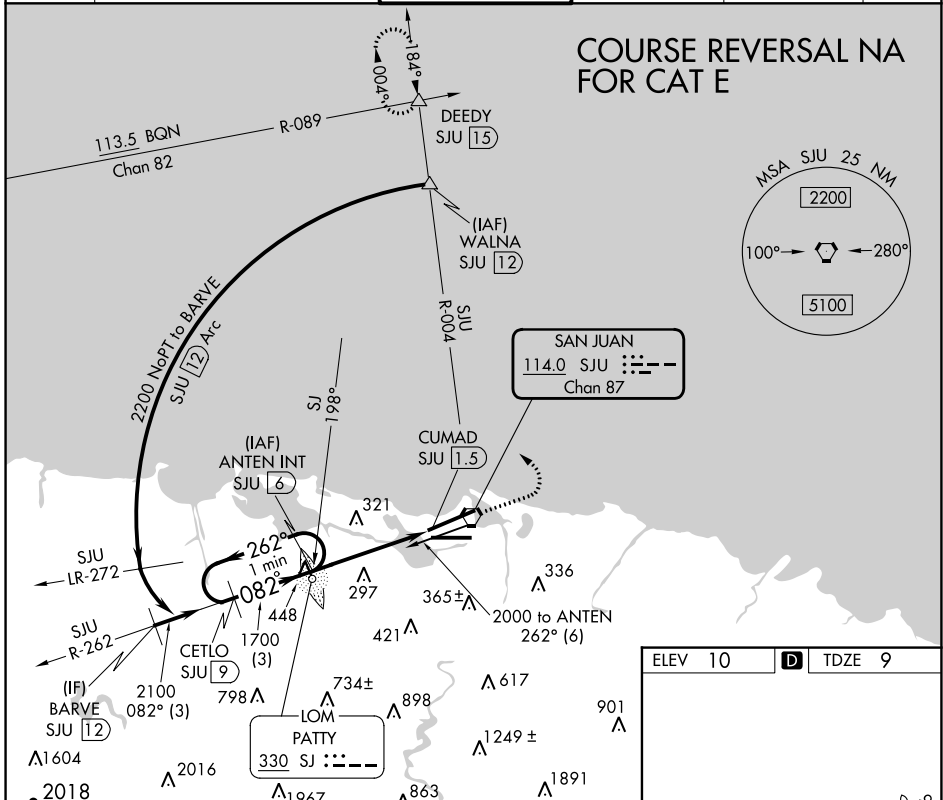
VORTAC SJU <b>114.0</b> Chan <b>87</b>	APP CRS <b>082°</b>	Rwy Idg TDZE Apt Elev	<b>9384</b> <b>9</b> <b>10</b>
--	------------------------	-----------------------------	--------------------------------------

# VOR or TACAN RWY 8

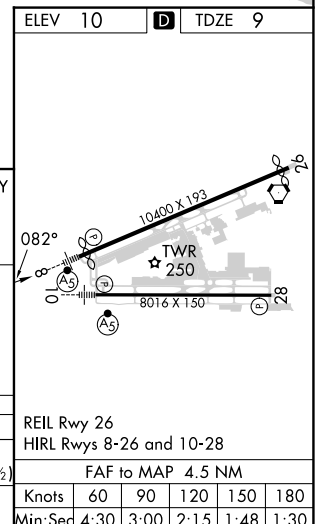
LUIS MUNOZ MARIN INTL (SJU)(TJSJ)

ADF or DME required.	MALSR	MISSED APPROACH: Climb to 2000 then climbing left turn to 3000 via heading 320° and SJU VORTAC R-004 outbound to DEEDY INT/SJU 15 DME and hold.
▼ For inop ALS, increase S-8 Cat E visibility to 2 SM.	AS	
▲ Circling NA for Cat E south of Rwy 10-28.		

D-ATIS <b>125.8</b>	SAN JUAN APP CON <b>119.4 269.2</b> (WEST & SW) <b>120.9 290.2</b> (NORTH & EAST)	SAN JUAN TOWER <b>132.05 257.8</b>	GND CON <b>121.9 348.6</b>	CLNC DEL <b>126.4 284.6</b>	CPDLC
------------------------	---	---------------------------------------	-------------------------------	--------------------------------	-------



CATEGORY	A	B	C	D	E
S-8	560-1/2 551 (600-1/2)	560-1 551 (600-1)	560-1 1/4 551 (600-1 1/4)	560-1 1/2 551 (600-1 1/2)	560-1 1/2 551 (600-1 1/2)
CIRCLING	600-1 590 (600-1)	740-2 730 (800-2)	920-3 910 (1000-3)		



SE-3, 28 NOV 2024 to 26 DEC 2024

SE-3, 28 NOV 2024 to 26 DEC 2024