

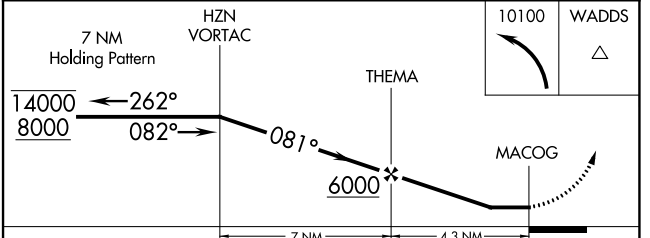
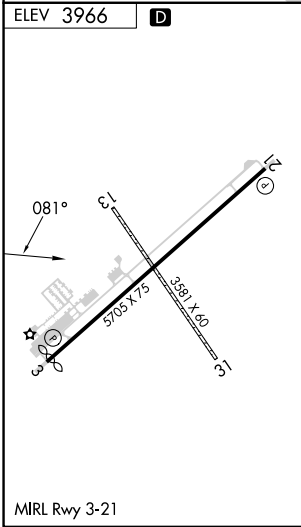
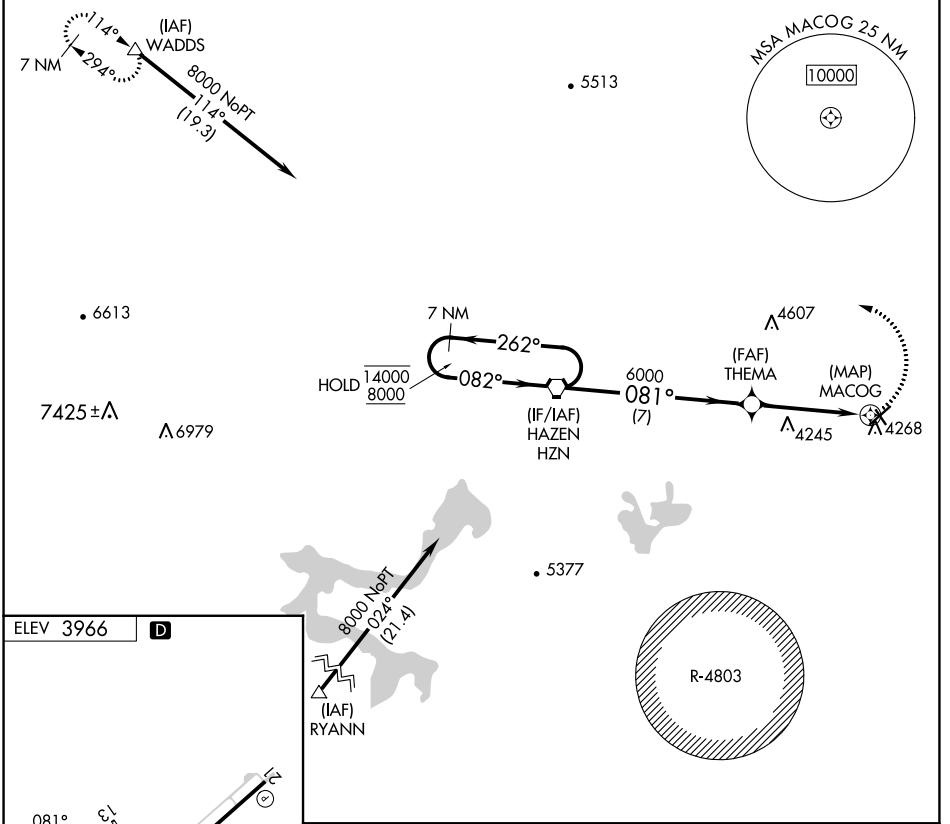
APP CRS <b>081°</b>	Rwy Idg TDZE Apt Elev	<b>N/A</b> <b>N/A</b> <b>3966</b>
------------------------	-----------------------------	---

# RNAV (GPS)-C

FALLON MUNI (F.LX)

<b>RNP APCH.</b> ▼ Circling NA to Rwys 13 and 31. Circling to Rwy 21 NA at night. When local altimeter not received, use Fallon NAS altimeter setting.		MISSED APPROACH: Climbing left turn to 10100 direct WADDS and hold, continue climb-in-hold 10100.
--	--	---

AWOS-AV <b>118.25</b>	KNFL ATIS * <b>370.925</b>	NAVY FALLON APP CON * <b>120.85 360.2</b>	UNICOM <b>122.8</b> (CTAF)
--------------------------	-------------------------------	--	-------------------------------



CATEGORY	A	B	C	D
<b>C</b> CIRCLING	4620-1	654 (700-1)	4620-1 <sup>3</sup> / <sub>4</sub> 654 (700-1 <sup>3</sup> / <sub>4</sub> )	4620-2 654 (700-2)

SW-4, 28 NOV 2024 to 26 DEC 2024

SW-4, 28 NOV 2024 to 26 DEC 2024